

# PIN RECEPTACLES

## FOR .015" - .025" DIAMETER PINS

### 1005/1013/8898

XXXX-0-15-XX-3X-XX-04-0

Press-fit in .057 mounting hole  
Annealed brass shell for auto-clinching \*



Basic Part Number	Length A
1005-0	.138
1013-0	.165
8898-0	.224

\* NOTE: 8898 is not annealed & not suitable for auto-clinching

### 0145/0146

014X-0-15-XX-30-XX-04-0

Press-fit in .059 mounting hole



Basic Part Number	Length A
0145-0	.300
0146-0	.410

### 4378

4378-0-15-XX-30-XX-10-0

Press-fit in .057 mounting hole



### 0556

0556-0-15-XX-30-XX-04-0

Press-fit in .059 mounting hole



### 1103

1103-0-15-XX-30-XX-04-0

Press-fit in .057 mounting hole



### 9234

9234-0-15-XX-30-XX-10-0

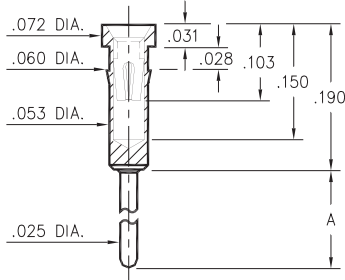
Solder mount in .052 min. mounting hole



### 0136/37/38/39/41/48/52

01XX-0-15-XX-30-XX-04-0

Press-fit in .057 mounting hole

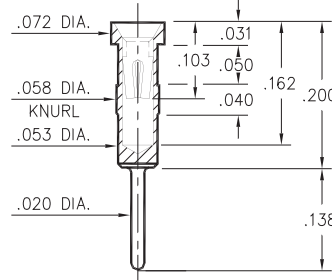


Basic Part Number	Length A
0136-0	1.215
0137-0	.560
0138-0	.210
0139-0	.635
0141-0	.700
0148-0	.455
0152-0	.410

### 0447

0447-0-15-XX-30-XX-04-0

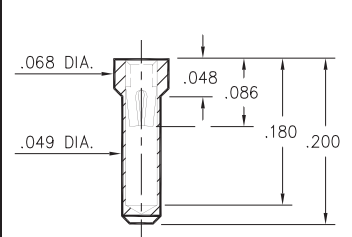
Press-fit in .056 mounting hole



### 5660

5660-0-15-XX-30-XX-10-0

Solder mount in .051 min. mounting hole



#### SPECIFICATIONS:

**Shell Material:** Brass Alloy 360, 1/2 Hard

**Contact Material:** Beryllium Copper Alloy 172, HT

**Dimensions:** Inches

**Tolerances On:** Lengths: ±.005

Diameters: ±.002

Angles: ±2°



**ORDER CODE:** XXXX - X - 15 - XX - XX - XX - XX - 0

**BASIC PART #**

**SPECIFY SHELL FINISH:**

- 01 200 μ" TIN/LEAD OVER NICKEL
- ◆ 80 200 μ" TIN OVER NICKEL (RoHS)
- ◆ 15 10 μ" GOLD OVER NICKEL (RoHS)

**SPECIFY CONTACT FINISH:**

- 02 100 μ" TIN/LEAD OVER NICKEL
- ◆ 84 100 μ" TIN OVER NICKEL (RoHS)
- ◆ 27 30 μ" GOLD OVER NICKEL (RoHS)

**SELECT CONTACT:**

**#30 or #32 CONTACT (DATA ON PAGE 253)**

(For alternate contact choices, see groups B and C on page 248)

