

ITEM	DESCRIPTION
1	SCREW
2	COVER ASSEMBLY
3	PCB
4	INSERT ASSEMBLY
5	GASKET

S19207TA022**

SERIES
 S19= INTERNAL THREAD FORM C MICRO
 POLES
 2= 2 POLE & 3= 3 POLE
 THREAD
 07= PG7, M2= M12x1.5
 MATERIAL AND HOUSING COLOUR
 G= PA6 GRAY, N= PA6 BLACK, W= PA6 BLACK VO,
 T= PA12 TRANSPARENT, B= PA6 WHITE
 CIRCUIT
 SEE DETAILS IN CATALOGUE
 VOLTAGE
 SEE DETAILS IN CATALOGUE
 SCREW AND GASKET
 1= NBR PROFILE GASKET & SCREW
 2= NBR FLAT GASKET & SCREW
 3= WHITE SILICON PROFILE GASKET & SCREW
 4= WHITE SILICON FLAT GASKET & SCREW
 A= NBR PROFILE GASKET & SCREW +2mm
 B= NBR FLAT GASKET & SCREW +2mm
 NON STANDARD COMPONENTS
 14= PACKED IN NEUTRAL BAG
 5N= PACKED IN BOXES OF 200

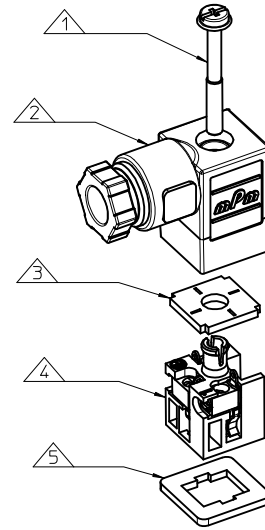
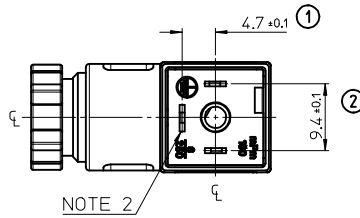
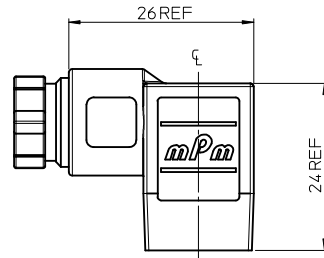
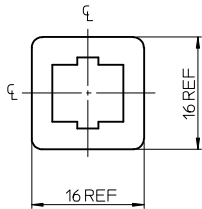
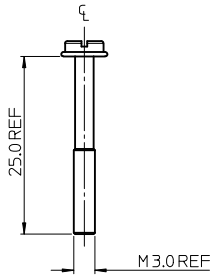
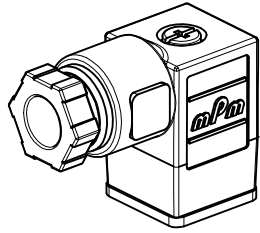
- NOTES
- PLEASE SEE SHEET 2 FOR CURRENTLY CONFIGURED PART NUMBERS. FOR SPECIFIC PART NUMBERS PLEASE CONTACT SALES OR CONSULT THE INTELLIGENT PART NUMBERS IN THE TABLE ATTACHED.
 - EARTH POSITION SHOWN, H6.
 - FOR PACKAGING SEE PACKAGING SPEC PK 121065-S19
 - PRODUCT SPEC: SEE PS-121201-001

LAST INSPECTION NUMBER 2

REMOVED PART NO: EC NO: IPG2014-4527 DRW:KORNOYLE 2014/02/26 CHKD:OSHEA 2014/03/06 APPR:STIGLIEFFIN 2014/04/01	QUALITY SYMBOLS ▽=0 ▽=0	GENERAL TOLERANCES (UNLESS SPECIFIED)		DIMENSION STYLE MM ONLY		SCALE 2:1	DESIGN UNITS METRIC	THIRD ANGLE PROJECTION	
		mm	INCH	DRAWN BY JOCNNOR	DATE 2011/05/18	TITLE S19 SERIES INTERNAL THREAD			
REV	DESCRIPTION	4 PLACES ± ---	± ---	CHECKED BY DMAHER	DATE 2011/05/18	MATERIAL NO. SD-121064-003			
		3 PLACES ± ---	± ---	APPROVED BY EFOLAN	DATE 2011/06/07				
		2 PLACES ± 0.10	± ---	DOCUMENT NO.		SHEET NO. 1 OF 2			
		1 PLACE ± 0.20	± ---	THIS DRAWING CONTAINS INFORMATION THAT IS PROPRIETARY TO MOLEX INCORPORATED AND SHOULD NOT BE USED WITHOUT WRITTEN PERMISSION					
DRAFT WHERE APPLICABLE MUST REMAIN WITHIN DIMENSIONS		ANGULAR ± 2 °							

PART No.	mPm PART No.	DESCRIPTION	CIRCUIT	VOLTAGE	COLOUR
1210640794	S19207NE052	TYPE C MICRO 2P PG7 BLACK NBR FLAT GASKET	E0	230V	DIODE
1210640798	S19207TA022	TYPE C MICRO 2P PG7 TRANSPARENT NBR FLAT GASKET	A0	24V	RED LED/LAMP
1210640804	S19207TA052	TYPE C MICRO 2P PG7 TRANSPARENT NBR FLAT GASKET	A0	230V	RED LED/LAMP
1210640807	S19207TA11A	TYPE C MICRO 2P PG7 TRANSPARENT NBR PROFILE GASKET & SCREW +2mm	A1	12V	RED LED/LAMP
1210640808	S19207TA121	TYPE C MICRO 2P PG7 TRANSPARENT NBR PROFILE GASKET	A1	24V	RED LED/LAMP
1210640809	S19207TA122	TYPE C MICRO 2P PG7 TRANSPARENT NBR FLAT GASKET	A1	24V	RED LED/LAMP
1210640812	S19207TA12A	TYPE C MICRO 2P PG7 TRANSPARENT NBR PROFILE GASKET & SCREW +2mm	A1	24V	RED LED/LAMP
1210640818	S19207TA142	TYPE C MICRO 2P PG7 TRANSPARENT NBR FLAT GASKET	A1	115V	RED LED/LAMP
1210640820	S19207TA14A	TYPE C MICRO 2P PG7 TRANSPARENT NBR PROFILE GASKET & SCREW +2mm	A1	115V	RED LED/LAMP
1210640825	S19207TA1B2	TYPE C MICRO 2P PG7 TRANSPARENT NBR FLAT GASKET	A1	24V	GREEN LED
1210640828	S19207TC022	TYPE C MICRO 2P PG7 TRANSPARENT NBR FLAT GASKET	C0	24V	RED LED/LAMP
1210640834	S19207TC122	TYPE C MICRO 2P PG7 TRANSPARENT NBR FLAT GASKET	C1	24V	RED LED/LAMP
1210640838	S19207TC321	TYPE C MICRO 2P PG7 TRANSPARENT NBR PROFILE GASKET	C3	24V	RED LED/LAMP
1210640839	S19207TC322	TYPE C MICRO 2P PG7 TRANSPARENT NBR FLAT GASKET	C3	24V	RED LED/LAMP
1210640846	S19207TC3H1	TYPE C MICRO 2P PG7 TRANSPARENT NBR PROFILE GASKET	C3	24V	AMBER LED
1210640847	S19207TC3H2	TYPE C MICRO 2P PG7 TRANSPARENT NBR FLAT GASKET	C3	24V	AMBER LED
1210640851	S19207TC42	TYPE C MICRO 2P PG7 TRANSPARENT NBR FLAT GASKET	C4	12V	RED LED/LAMP
1210640852	S19207TC421	TYPE C MICRO 2P PG7 TRANSPARENT NBR PROFILE GASKET	C4	24V	RED LED/LAMP
1210640853	S19207TC422	TYPE C MICRO 2P PG7 TRANSPARENT NBR FLAT GASKET	C4	24V	RED LED/LAMP
1210640854	S19207TC42A	TYPE C MICRO 2P PG7 TRANSPARENT NBR PROFILE GASKET & SCREW +2mm	C4	24V	RED LED/LAMP
1210640857	S19207TC441	TYPE C MICRO 2P PG7 TRANSPARENT NBR PROFILE GASKET	C4	115V	RED LED/LAMP
1210640858	S19207TC442	TYPE C MICRO 2P PG7 TRANSPARENT NBR FLAT GASKET	C4	115V	RED LED/LAMP
1210640863	S19207TC4B2	TYPE C MICRO 2P PG7 TRANSPARENT NBR FLAT GASKET	C4	24V	GREEN LED
1210640867	S19207TC4D2	TYPE C MICRO 2P PG7 TRANSPARENT NBR FLAT GASKET	C4	115V	GREEN LED
1210640869	S19207TC4E2	TYPE C MICRO 2P PG7 TRANSPARENT NBR FLAT GASKET	C4	230V	GREEN LED
1210640871	S19207TC4H1	TYPE C MICRO 2P PG7 TRANSPARENT NBR PROFILE GASKET	C4	24V	AMBER LED
1210640872	S19207TC4H2	TYPE C MICRO 2P PG7 TRANSPARENT NBR FLAT GASKET	C4	24V	AMBER LED
1210641256	S19207TA021	TYPE C MICRO 2P PG7 TRANSPARENT NBR PROFILE GASKET	A0	24V	RED LED/LAMP
1210641294	S19207TC4B1	TYPE C MICRO 2P PG7 TRANSPARENT NBR PROFILE GASKET	C4	24V	GREEN LED
1210641445	S19207TA051	TYPE C MICRO 2P PG7 TRANSPARENT NBR PROFILE GASKET	A0	230V	RED LED/LAMP
1210641465	S19207TC323	TYPE C MICRO 2P PG7 TRANSPARENT WHITE SILICON PROFILE GASKET	C3	24V	RED LED/LAMP
1210641541	S192M2TC4H1	TYPE C MICRO 2P M12x1.5 TRANSPARENT NBR PROFILE GASKET	C4	24V	AMBER LED
1210641550	S192M2TA121	TYPE C MICRO 2P M12x1.5 TRANSPARENT NBR PROFILE GASKET	A1	24V	RED LED/LAMP
1210641559	S19207NE051	TYPE C MICRO 2P PG7 BLACK NBR PROFILE GASKET	E0	230V	DIODE
1210641710	S19207TC4C3	TYPE C MICRO 2P PG7 TRANSPARENT WHITE SILICON PROFILE GASKET	C4	48V	GREEN LED
1210641718	S19207TC4L1	TYPE C MICRO 2P PG7 TRANSPARENT NBR PROFILE GASKET	C4	115V	AMBER LED
1210641727	S19207TC4L2	TYPE C MICRO 2P PG7 TRANSPARENT NBR FLAT GASKET	C4	115V	AMBER LED
1210641728	S19207TA1H1	TYPE C MICRO 2P PG7 TRANSPARENT NBR PROFILE GASKET	A1	24V	AMBER LED
1210641729	S19207TA1L1	TYPE C MICRO 2P PG7 TRANSPARENT NBR PROFILE GASKET	A1	115V	AMBER LED
1210650292	S19207TC4225N	TYPE C MICRO 2P PG7 TRANSPARENT NBR FLAT GASKET IN BOX OF 200	C4	24V	RED LED/LAMP
1210650511	S19207TC42214	TYPE C MICRO 2P PG7 TRANSPARENT NBR FLAT GASKET IN NEUTRAL BAG	C4	24V	RED LED/LAMP
1210641766	S19207TA1D1	TYPE C MICRO 2P PG7 TRANSPARENT NBR PROFILE GASKET	A1	115V	GREEN LED
1210641797	S19207NE051P7	TYPE C MICRO 2P PG7 BLACK NBR PROFILE GASKET, IP67 COMPLIANT	E0	230V	DIODE
1210641342	S19207TC4M1	TYPE C MICRO 2P PG7 TRANSPARENT NBR PROFILE GASKET	C4	230V	AMBER LED

SEE SHEET ONE EC NO: PG2014-4527 DRW:KORNOYLE 2014/02/26 CHK:DSHEA 2014/03/06 APPR:STGRiffin 2014/04/01 DESCRIPTION	QUALITY SYMBOLS ▽=0 ▽=0	GENERAL TOLERANCES (UNLESS SPECIFIED) <table border="1"> <tr><th colspan="2">mm</th><th>INCH</th></tr> <tr><td>4 PLACES</td><td>± 0.10</td><td>± 0.004</td></tr> <tr><td>3 PLACES</td><td>± 0.15</td><td>± 0.006</td></tr> <tr><td>2 PLACES</td><td>± 0.20</td><td>± 0.008</td></tr> <tr><td>1 PLACE</td><td>± 0.25</td><td>± 0.010</td></tr> </table>	mm		INCH	4 PLACES	± 0.10	± 0.004	3 PLACES	± 0.15	± 0.006	2 PLACES	± 0.20	± 0.008	1 PLACE	± 0.25	± 0.010	DIMENSION STYLE MM ONLY	SCALE 2:1	DESIGN UNITS METRIC	THIRD ANGLE PROJECTION
	mm		INCH																		
	4 PLACES	± 0.10	± 0.004																		
	3 PLACES	± 0.15	± 0.006																		
2 PLACES	± 0.20	± 0.008																			
1 PLACE	± 0.25	± 0.010																			
DRAWN BY JOCONNOR	DATE 2011/05/18	TITLE S19 SERIES INTERNAL THREAD																			
CHECKED BY DMAHER	DATE 2011/05/18																				
APPROVED BY EFOLAN	DATE 2011/06/07	MATERIAL NO. SEE CHART																			
		DOCUMENT NO. SD-121064-003			SHEET NO. 2 OF 2																
DRAFT WHERE APPLICABLE MUST REMAIN WITHIN DIMENSIONS																					
THIS DRAWING CONTAINS INFORMATION THAT IS PROPRIETARY TO MOLEX INCORPORATED AND SHOULD NOT BE USED WITHOUT WRITTEN PERMISSION																					



ITEM	DESCRIPTION
1	SCREW
2	COVER ASSEMBLY
3	PCB
4	INSERT ASSEMBLY
5	GASKET

S19207TA022**

SERIES
 S19= INTERNAL THREAD FORM C MICRO
 POLES
 2= 2 POLE & 3= 3 POLE
 THREAD
 07= PG7, M2= M12x1.5
 MATERIAL AND HOUSING COLOUR
 G= PA6 GRAY, N= PA6 BLACK, W= PA6 BLACK VO,
 T= PA12 TRANSPARENT, B= PA6 WHITE
 CIRCUIT
 SEE DETAILS IN CATALOGUE
 VOLTAGE
 SEE DETAILS IN CATALOGUE
 SCREW AND GASKET
 1= NBR PROFILE GASKET & SCREW
 2= NBR FLAT GASKET & SCREW
 3= WHITE SILICON PROFILE GASKET & SCREW
 4= WHITE SILICON FLAT GASKET & SCREW
 A= NBR PROFILE GASKET & SCREW +2mm
 B= NBR FLAT GASKET & SCREW +2mm
 NON STANDARD COMPONENTS
 14= PACKED IN NEUTRAL BAG
 5N= PACKED IN BOXES OF 200

- NOTES
- PLEASE SEE SHEET 2 FOR CURRENTLY CONFIGURED PART NUMBERS. FOR SPECIFIC PART NUMBERS PLEASE CONTACT SALES OR CONSULT THE INTELLIGENT PART NUMBERS IN THE TABLE ATTACHED.
 - EARTH POSITION SHOWN. H6.
 - FOR PACKAGING SEE PACKAGING SPEC PK 121065-S19
 - PRODUCT SPEC: SEE PS-121201-001

LAST INSPECTION NUMBER 2

REMOVED PART NO: EC NO: IPG2014-4527 DRW:KORNOYLE 2014/02/26 CHK:D:OSHEA 2014/03/06 APPR:STIGLIEFFIN 2014/04/01	QUALITY SYMBOLS ▽=0 ▽=0	GENERAL TOLERANCES (UNLESS SPECIFIED)		DIMENSION STYLE MM ONLY		SCALE 2:1	DESIGN UNITS METRIC	THIRD ANGLE PROJECTION
		4 PLACES ± --- ± --- 3 PLACES ± --- ± --- 2 PLACES ± 0.10 ± --- 1 PLACE ± 0.20 ± --- ANGULAR ± 2 °	DRAWN BY JOCONNOR CHECKED BY DMAHER APPROVED BY EFOLAN	DATE 2011/05/18 DATE 2011/05/18 DATE 2011/06/07	TITLE S19 SERIES INTERNAL THREAD			
DRAFT WHERE APPLICABLE MUST REMAIN WITHIN DIMENSIONS		MATERIAL NO. SEE SHEET 2		DOCUMENT NO. SD-121064-003		MATERIAL NO. MOLEX INCORPORATED		
		SIZE A 2		THIS DRAWING CONTAINS INFORMATION THAT IS PROPRIETARY TO MOLEX INCORPORATED AND SHOULD NOT BE USED WITHOUT WRITTEN PERMISSION				

PART No.	mPm PART No.	DESCRIPTION	CIRCUIT	VOLTAGE	COLOUR
1210640794	S19207NE052	TYPE C MICRO 2P PG7 BLACK NBR FLAT GASKET	E0	230V	DIODE
1210640798	S19207TA022	TYPE C MICRO 2P PG7 TRANSPARENT NBR FLAT GASKET	A0	24V	RED LED/LAMP
1210640804	S19207TA052	TYPE C MICRO 2P PG7 TRANSPARENT NBR FLAT GASKET	A0	230V	RED LED/LAMP
1210640807	S19207TA11A	TYPE C MICRO 2P PG7 TRANSPARENT NBR PROFILE GASKET & SCREW +2mm	A1	12V	RED LED/LAMP
1210640808	S19207TA121	TYPE C MICRO 2P PG7 TRANSPARENT NBR PROFILE GASKET	A1	24V	RED LED/LAMP
1210640809	S19207TA122	TYPE C MICRO 2P PG7 TRANSPARENT NBR FLAT GASKET	A1	24V	RED LED/LAMP
1210640812	S19207TA12A	TYPE C MICRO 2P PG7 TRANSPARENT NBR PROFILE GASKET & SCREW +2mm	A1	24V	RED LED/LAMP
1210640818	S19207TA142	TYPE C MICRO 2P PG7 TRANSPARENT NBR FLAT GASKET	A1	115V	RED LED/LAMP
1210640820	S19207TA14A	TYPE C MICRO 2P PG7 TRANSPARENT NBR PROFILE GASKET & SCREW +2mm	A1	115V	RED LED/LAMP
1210640825	S19207TA1B2	TYPE C MICRO 2P PG7 TRANSPARENT NBR FLAT GASKET	A1	24V	GREEN LED
1210640828	S19207TC022	TYPE C MICRO 2P PG7 TRANSPARENT NBR FLAT GASKET	C0	24V	RED LED/LAMP
1210640834	S19207TC122	TYPE C MICRO 2P PG7 TRANSPARENT NBR FLAT GASKET	C1	24V	RED LED/LAMP
1210640838	S19207TC321	TYPE C MICRO 2P PG7 TRANSPARENT NBR PROFILE GASKET	C3	24V	RED LED/LAMP
1210640839	S19207TC322	TYPE C MICRO 2P PG7 TRANSPARENT NBR FLAT GASKET	C3	24V	RED LED/LAMP
1210640846	S19207TC3H1	TYPE C MICRO 2P PG7 TRANSPARENT NBR PROFILE GASKET	C3	24V	AMBER LED
1210640847	S19207TC3H2	TYPE C MICRO 2P PG7 TRANSPARENT NBR FLAT GASKET	C3	24V	AMBER LED
1210640851	S19207TC42	TYPE C MICRO 2P PG7 TRANSPARENT NBR FLAT GASKET	C4	12V	RED LED/LAMP
1210640852	S19207TC421	TYPE C MICRO 2P PG7 TRANSPARENT NBR PROFILE GASKET	C4	24V	RED LED/LAMP
1210640853	S19207TC422	TYPE C MICRO 2P PG7 TRANSPARENT NBR FLAT GASKET	C4	24V	RED LED/LAMP
1210640854	S19207TC42A	TYPE C MICRO 2P PG7 TRANSPARENT NBR PROFILE GASKET & SCREW +2mm	C4	24V	RED LED/LAMP
1210640857	S19207TC441	TYPE C MICRO 2P PG7 TRANSPARENT NBR PROFILE GASKET	C4	115V	RED LED/LAMP
1210640858	S19207TC442	TYPE C MICRO 2P PG7 TRANSPARENT NBR FLAT GASKET	C4	115V	RED LED/LAMP
1210640863	S19207TC4B2	TYPE C MICRO 2P PG7 TRANSPARENT NBR FLAT GASKET	C4	24V	GREEN LED
1210640867	S19207TC4D2	TYPE C MICRO 2P PG7 TRANSPARENT NBR FLAT GASKET	C4	115V	GREEN LED
1210640869	S19207TC4E2	TYPE C MICRO 2P PG7 TRANSPARENT NBR FLAT GASKET	C4	230V	GREEN LED
1210640871	S19207TC4H1	TYPE C MICRO 2P PG7 TRANSPARENT NBR PROFILE GASKET	C4	24V	AMBER LED
1210640872	S19207TC4H2	TYPE C MICRO 2P PG7 TRANSPARENT NBR FLAT GASKET	C4	24V	AMBER LED
1210641256	S19207TA021	TYPE C MICRO 2P PG7 TRANSPARENT NBR PROFILE GASKET	A0	24V	RED LED/LAMP
1210641294	S19207TC4B1	TYPE C MICRO 2P PG7 TRANSPARENT NBR PROFILE GASKET	C4	24V	GREEN LED
1210641445	S19207TA051	TYPE C MICRO 2P PG7 TRANSPARENT NBR PROFILE GASKET	A0	230V	RED LED/LAMP
1210641465	S19207TC323	TYPE C MICRO 2P PG7 TRANSPARENT WHITE SILICON PROFILE GASKET	C3	24V	RED LED/LAMP
1210641541	S192M2TC4H1	TYPE C MICRO 2P M12x1.5 TRANSPARENT NBR PROFILE GASKET	C4	24V	AMBER LED
1210641550	S192M2TA121	TYPE C MICRO 2P M12x1.5 TRANSPARENT NBR PROFILE GASKET	A1	24V	RED LED/LAMP
1210641559	S19207NE051	TYPE C MICRO 2P PG7 BLACK NBR PROFILE GASKET	E0	230V	DIODE
1210641710	S19207TC4C3	TYPE C MICRO 2P PG7 TRANSPARENT WHITE SILICON PROFILE GASKET	C4	48V	GREEN LED
1210641718	S19207TC4L1	TYPE C MICRO 2P PG7 TRANSPARENT NBR PROFILE GASKET	C4	115V	AMBER LED
1210641727	S19207TC4L2	TYPE C MICRO 2P PG7 TRANSPARENT NBR FLAT GASKET	C4	115V	AMBER LED
1210641728	S19207TA1H1	TYPE C MICRO 2P PG7 TRANSPARENT NBR PROFILE GASKET	A1	24V	AMBER LED
1210641729	S19207TA1L1	TYPE C MICRO 2P PG7 TRANSPARENT NBR PROFILE GASKET	A1	115V	AMBER LED
1210650292	S19207TC4225N	TYPE C MICRO 2P PG7 TRANSPARENT NBR FLAT GASKET IN BOX OF 200	C4	24V	RED LED/LAMP
1210650511	S19207TC42214	TYPE C MICRO 2P PG7 TRANSPARENT NBR FLAT GASKET IN NEUTRAL BAG	C4	24V	RED LED/LAMP
1210641766	S19207TA1D1	TYPE C MICRO 2P PG7 TRANSPARENT NBR PROFILE GASKET	A1	115V	GREEN LED
1210641797	S19207NE051P7	TYPE C MICRO 2P PG7 BLACK NBR PROFILE GASKET, IP67 COMPLIANT	E0	230V	DIODE
1210641342	S19207TC4M1	TYPE C MICRO 2P PG7 TRANSPARENT NBR PROFILE GASKET	C4	230V	AMBER LED

SEE SHEET ONE EC NO: PG2014-4527 DRW:KORNOYLE 2014/02/26 CHK:DSHEA 2014/03/06 APPR:STGRiffin 2014/04/01 DESCRIPTION	QUALITY SYMBOLS ▽=0 ▽=0	GENERAL TOLERANCES (UNLESS SPECIFIED) <table border="1"> <tr><th colspan="2">mm</th><th>INCH</th></tr> <tr><td>4 PLACES</td><td>± 0.10</td><td>± 0.004</td></tr> <tr><td>3 PLACES</td><td>± 0.15</td><td>± 0.006</td></tr> <tr><td>2 PLACES</td><td>± 0.20</td><td>± 0.008</td></tr> <tr><td>1 PLACE</td><td>± 0.25</td><td>± 0.010</td></tr> </table>	mm		INCH	4 PLACES	± 0.10	± 0.004	3 PLACES	± 0.15	± 0.006	2 PLACES	± 0.20	± 0.008	1 PLACE	± 0.25	± 0.010	DIMENSION STYLE MM ONLY	SCALE 2:1	DESIGN UNITS METRIC	THIRD ANGLE PROJECTION
	mm		INCH																		
	4 PLACES	± 0.10	± 0.004																		
	3 PLACES	± 0.15	± 0.006																		
2 PLACES	± 0.20	± 0.008																			
1 PLACE	± 0.25	± 0.010																			
DRAFT WHERE APPLICABLE MUST REMAIN WITHIN DIMENSIONS	<table border="1"> <tr><th>DRAWN BY</th><th>DATE</th><th>TITLE</th></tr> <tr><td>JOCONNOR</td><td>2011/05/18</td><td rowspan="2">S19 SERIES INTERNAL THREAD</td></tr> <tr><th>CHECKED BY</th><th>DATE</th></tr> <tr><td>DMAHER</td><td>2011/05/18</td></tr> <tr><th>APPROVED BY</th><th>DATE</th><td rowspan="2">MATERIAL NO. SD-121064-003</td></tr> <tr><td>EFOLAN</td><td>2011/06/07</td></tr> </table>	DRAWN BY	DATE	TITLE	JOCONNOR	2011/05/18	S19 SERIES INTERNAL THREAD	CHECKED BY	DATE	DMAHER	2011/05/18	APPROVED BY	DATE	MATERIAL NO. SD-121064-003	EFOLAN	2011/06/07	MATERIAL NO. SD-121064-003	DOCUMENT NO. SD-121064-003	SHEET NO. 2 OF 2		
DRAWN BY	DATE	TITLE																			
JOCONNOR	2011/05/18	S19 SERIES INTERNAL THREAD																			
CHECKED BY	DATE																				
DMAHER	2011/05/18																				
APPROVED BY	DATE	MATERIAL NO. SD-121064-003																			
EFOLAN	2011/06/07																				
SEE CHART		MOLEX INCORPORATED																			
THIS DRAWING CONTAINS INFORMATION THAT IS PROPRIETARY TO MOLEX INCORPORATED AND SHOULD NOT BE USED WITHOUT WRITTEN PERMISSION																					