

Introduction

The evaluation board is designed to help the customer evaluate the 9FGV1001, 9FGV1002, and 9FGV1004 devices. When the board is connected to a PC running IDT [Timing Commander™](#) software through USB, the device can be configured and programmed to generate different combinations of frequencies.

Board Overview

Use [Figure 1](#) and [Table 1](#) to identify: power supply jacks, USB connector, input and output frequency SMA connectors.

Figure 1. Evaluation Board Overview

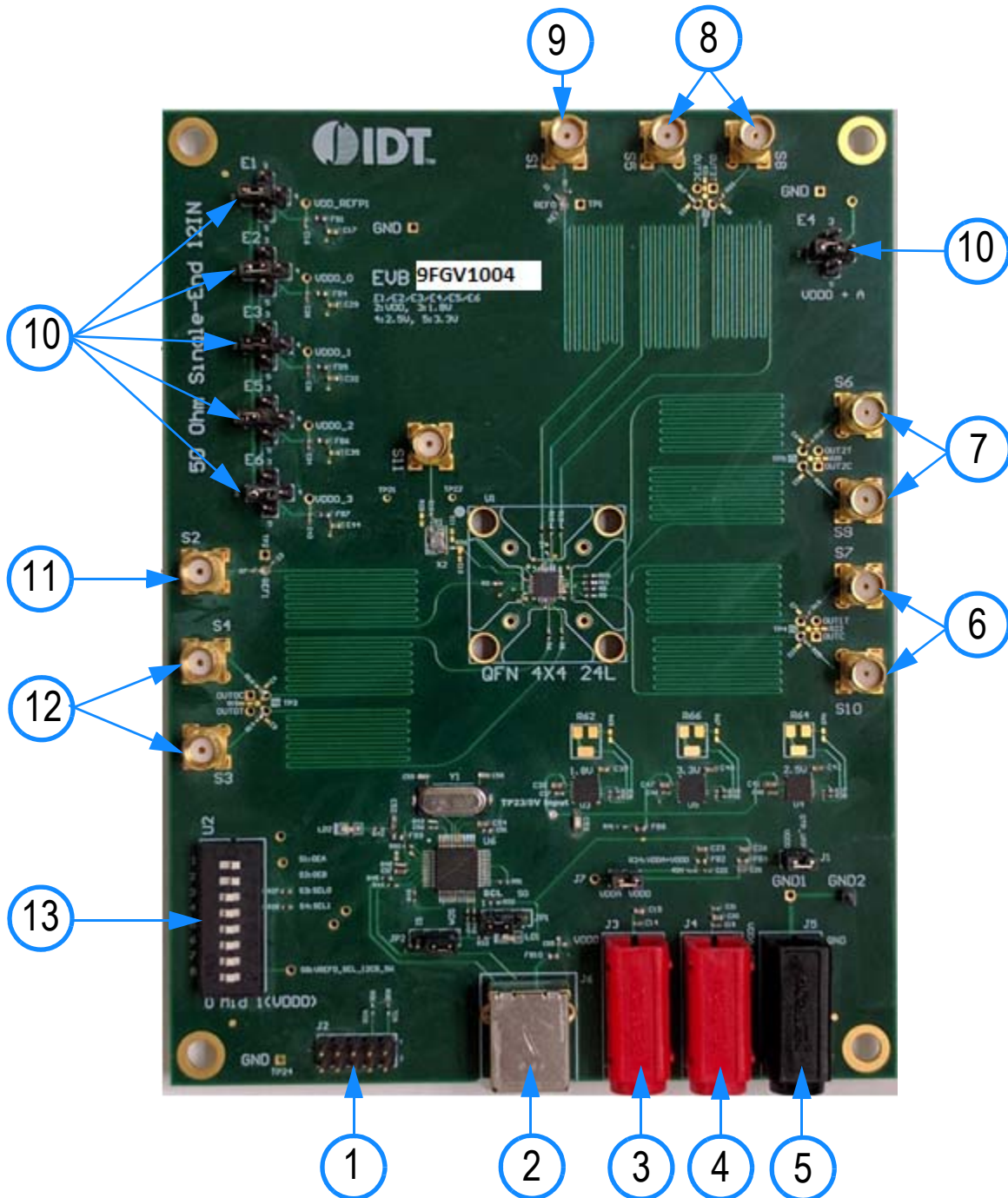


Table 1. Evaluation Board Pins and Functions

| Label Number | Name | On-board Connector Label | Function |
|--------------|--------------------------------------|--------------------------|---|
| 1 | I ² C Interface Connector | J2 | Alternative I ² C interface connector for Aardvark. IDT Timing Commander can also use Aardvark. |
| 2 | USB Connector | J6 | Connect this USB to your PC to run IDT Timing Commander. The board can be powered from the USB port. |
| 3 | Output Power Supply Jack | J3 | Connect to 1.8V, 2.5V or 3.3V for the output voltage of the device. |
| 4 | Core Power Supply Jack | J4 | Connect to 1.8V, 2.5V or 3.3V for the core voltage of the device. |
| 5 | Ground Jack | J5 | Connect to ground of power supply. |
| 6 | Differential Output 1 | S7 and S10 | Can be a differential pair, or two single-ended outputs. Available logic types: LVCMOS, LVDS and LP-HCSL. |
| 7 | Differential Output 2 | S6 and S9 | Can be a differential pair, or two single-ended outputs. Available logic types: LVCMOS, LVDS and LP-HCSL. |
| 8 | Differential Output 3 | S5 and S8 | Can be a differential pair, or two single-ended outputs. Available logic types: LVCMOS, LVDS and LP-HCSL. |
| 9 | Reference Output 0 | S1 | Reference or buffered output from the crystal. |
| 10 | Power Supply Voltage Selector | E1, E2, E3, E4, E5, E6 | VDD_REFP1, VDDO_0, VDDO_1, four-way headers used to select a power supply voltage. Connect the center pin to one of the 4 surrounding pins to select a voltage or a source. |
| 11 | Reference Output 1 | S2 | Reference or buffered output from the crystal. |
| 12 | Differential Output 0 | S3 and S4 | Can be a differential pair, or two single-ended outputs. Available logic types: LVCMOS, LVDS and LP-HCSL. |
| 13 | DIP Switch | U2 | Used to control certain pins like OEA, OEB, SEL0, SEL1 and I ² C versus Hardware Select mode. |

Board Power Supply

The evaluation board uses jumpers E1–E6 to set the power supply voltages for various V_{DD} pins. The 4-way jumpers can select 3 different voltages from regulators that use power from the USB port. Selection #2 is the jack for connecting a bench power supply.

E1: Power supply for the REF outputs. The E1 voltage also determines the LVCMOS output levels of the REF0 and REF1 outputs.

E2: Power supply for the OUT0 output driver.

E3: Power supply for the OUT1 output driver.

E4: Power supply for the analog (V_{DDA}) and digital (V_{DDD}) core V_{DD} pins.

E5: Power supply for the OUT2 output driver.

E6: Power supply for the OUT3 output driver.

See *9FGV100x Evaluation Board Schematics* (Figure 5–Figure 8) for detailed information.

DIP Switch (U2)

Refer to [Figure 2](#) and [Table 2](#) for the DIP switch settings and functions.

Figure 2. DIP Switch (U2)

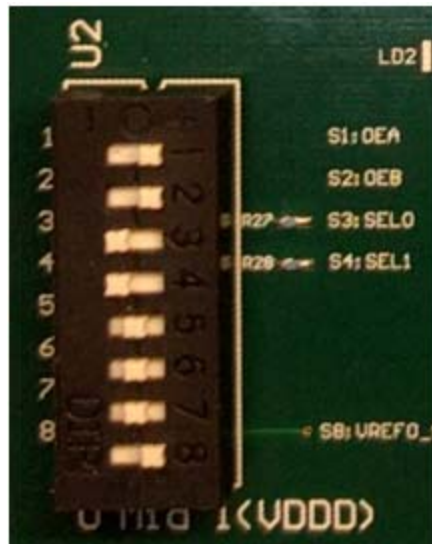


Table 2. DIP Switch Settings

| Switch Number | Function |
|---------------|---|
| 1 = OEA | See datasheet. |
| 2 = OEB | |
| 3 = SEL0 | Select 1 of 4 pre-programmed configurations when in Hardware Select mode. Also see switch 8. |
| 4 = SEL1 | |
| 5 | Not used. |
| 6 | Not used. |
| 7 | Not used. |
| 8 = Mode | Selects operating mode at power-up. “-” or “0” selects I ² C mode. “+” selects Hardware Select mode. |

Interfacing with a Computer to Run Timing Commander

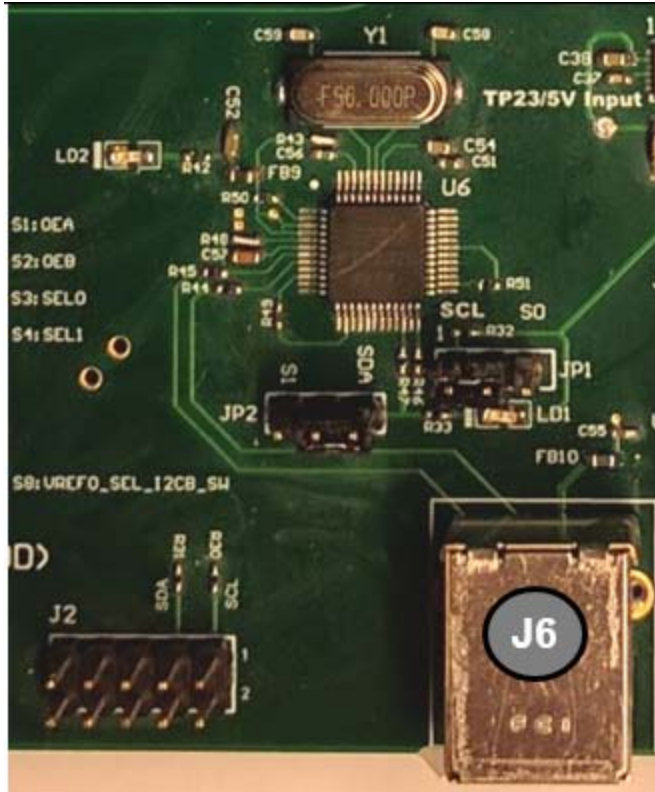
As shown in [Figure 3](#), jumpers JP1 and JP2 are installed to use the FTDI chip U6 for connecting to the computer with the USB port J6. The U6 chip translates USB to I²C.

When using Aardvark, remove jumpers JP1 and JP2 and connect the Aardvark to connector J2. Default I²C device address for the 9FGV100x is 0x68.

Miscellaneous interfaces can connect to J2 pin 1 for the Serial Clock and to J2 pin 3 for the Serial Data signal. J2 pin 2 can be used as ground, but any other ground pin will also work.

When OTP in the 9FGV100x devices is burned with multiple configurations, JP1 and JP2 can be applied in JP3 position respectively to connect the SEL0 and SEL1 switches in U2. Move switch 8 to “+” and power-up the 9FGV100x in Hardware Select mode. This enables changing between 4 configurations with SEL0/1.

Figure 3. Connecting to a Computer via USB Port J6



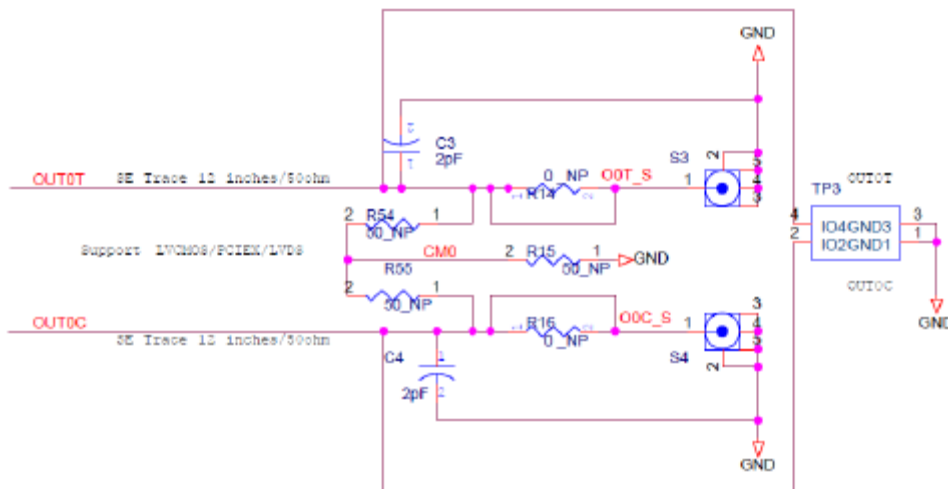
On-board Crystal

A 25MHz crystal is installed on the board and is used as the reference frequency. The board can also be modified to insert an external reference clock into the XIN pin using SMA connector S11. When using an external reference clock, additional components need to be assembled and the crystal needs to be removed.

Output Terminations





Each differential output has a pair of SMA connectors to connect to a 50Ω coax. It is recommended to combine the two signals using a balun or splitter/combiner device when measuring jitter or phase noise. The circuit at the SMA connectors is shown in [Figure 4](#).

Figure 4. SMA Connectors Circuit



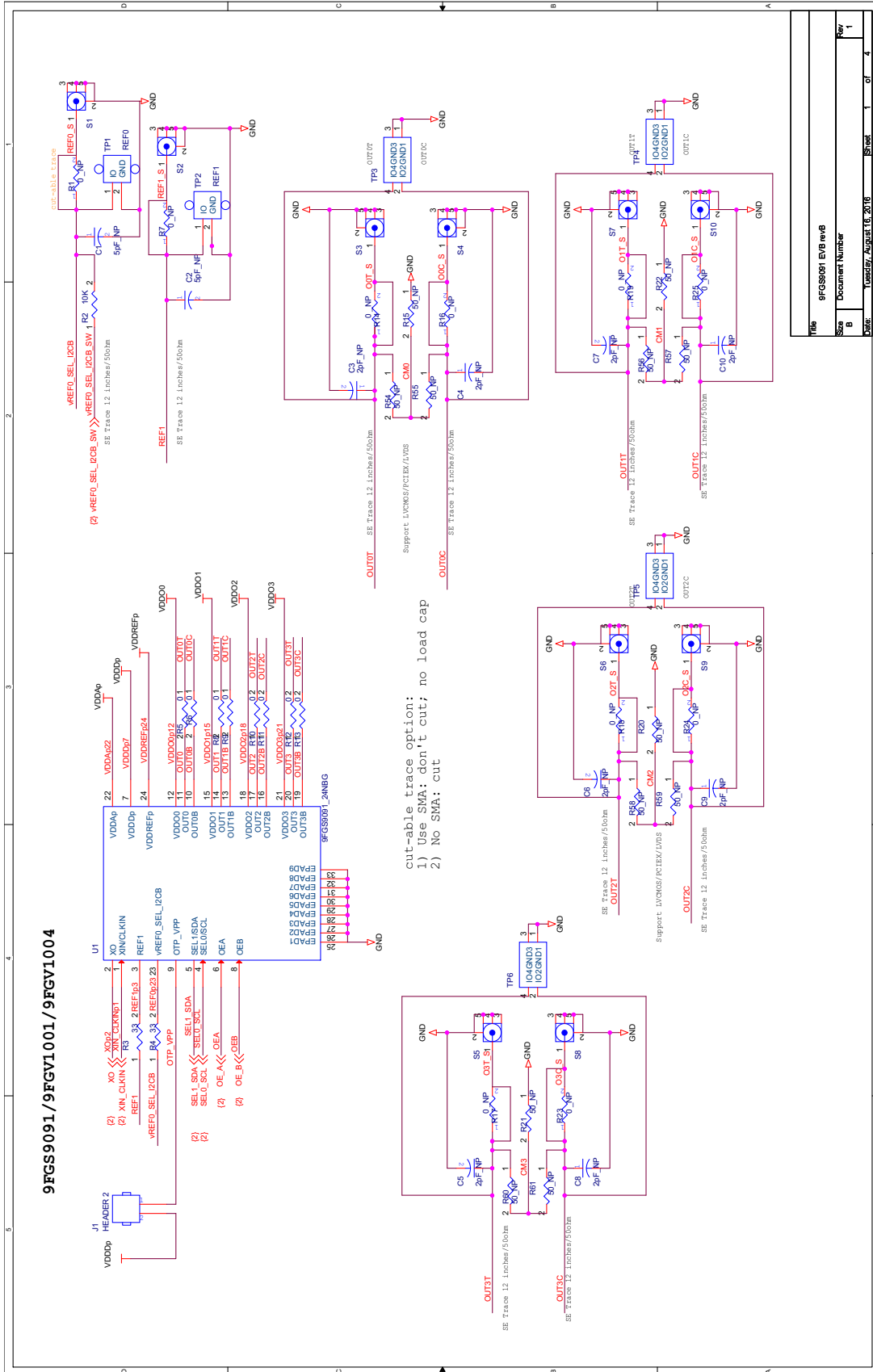
The circuit is designed for maximum flexibility when testing all possible logic types. Default assembly uses a 0.1μF capacitor in place of R14 and R16, and the short across R14 and R16 is cut. No other devices are assembled. This simple AC-coupled configuration allows for testing phase noise and jitter of all possible logic types. The circuit can be modified for custom tests. TP3 is a position to place a differential FET probe.

Operating Instructions

1. Set all jumpers for power supply choices (E1–E6), interface choices (JP1 and JP2), and set the U2 switches.
2. Connect an interface: USB or I²C.
3. In the case of an I²C interface, also connect external power supply to jacks J3, J4 and J5.
4. Start Timing Commander for either USB or Aardvark.
 - a. Start new configuration or load TCS file for existing configuration.
 - b. Choose PhiClock personality.
 - c. For Aardvark, click  to select Aardvark “Connection Interface”.
 - d. For a new configuration, prepare all settings.
 - e. Click  to connect to the 9FGV100x device. Top right should turn green. 
 - f. Click  to write all settings to the 9FGV100x device.
 - g. It should now be possible to measure clocks on outputs.
 - h. While connected, each change to the settings will be written to the 9FGV100x immediately and can be observed at the clock outputs.

Schematics

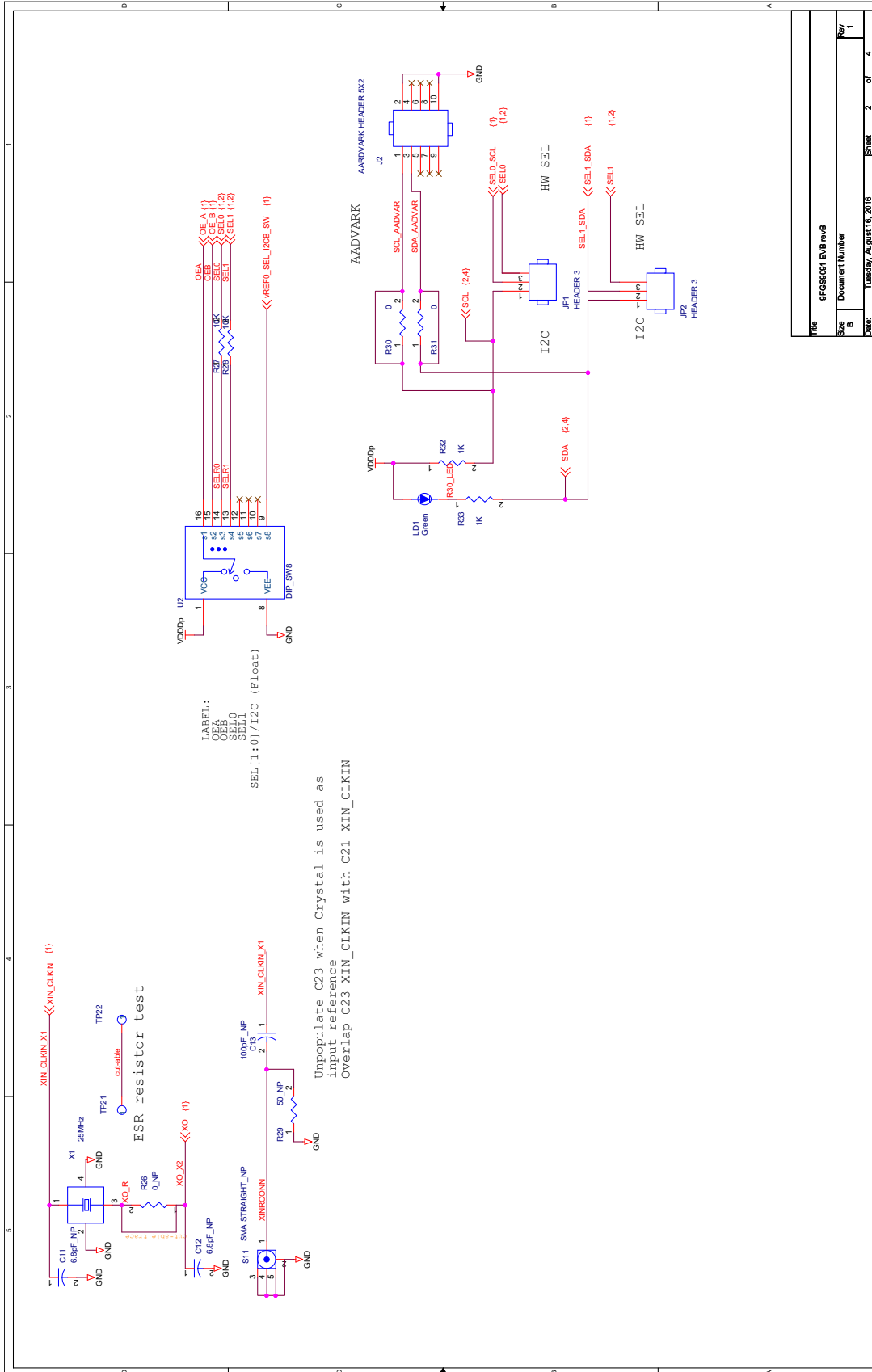
Figure 5. 9FGV100x Evaluation Board Schematic – page 1



| | |
|-------|---------------------------|
| File | 9FGS001 EVB revB |
| Size | Document Number |
| Rev | 1 |
| Date | 1/25/2018, April 18, 2018 |
| Sheet | 1 of 4 |

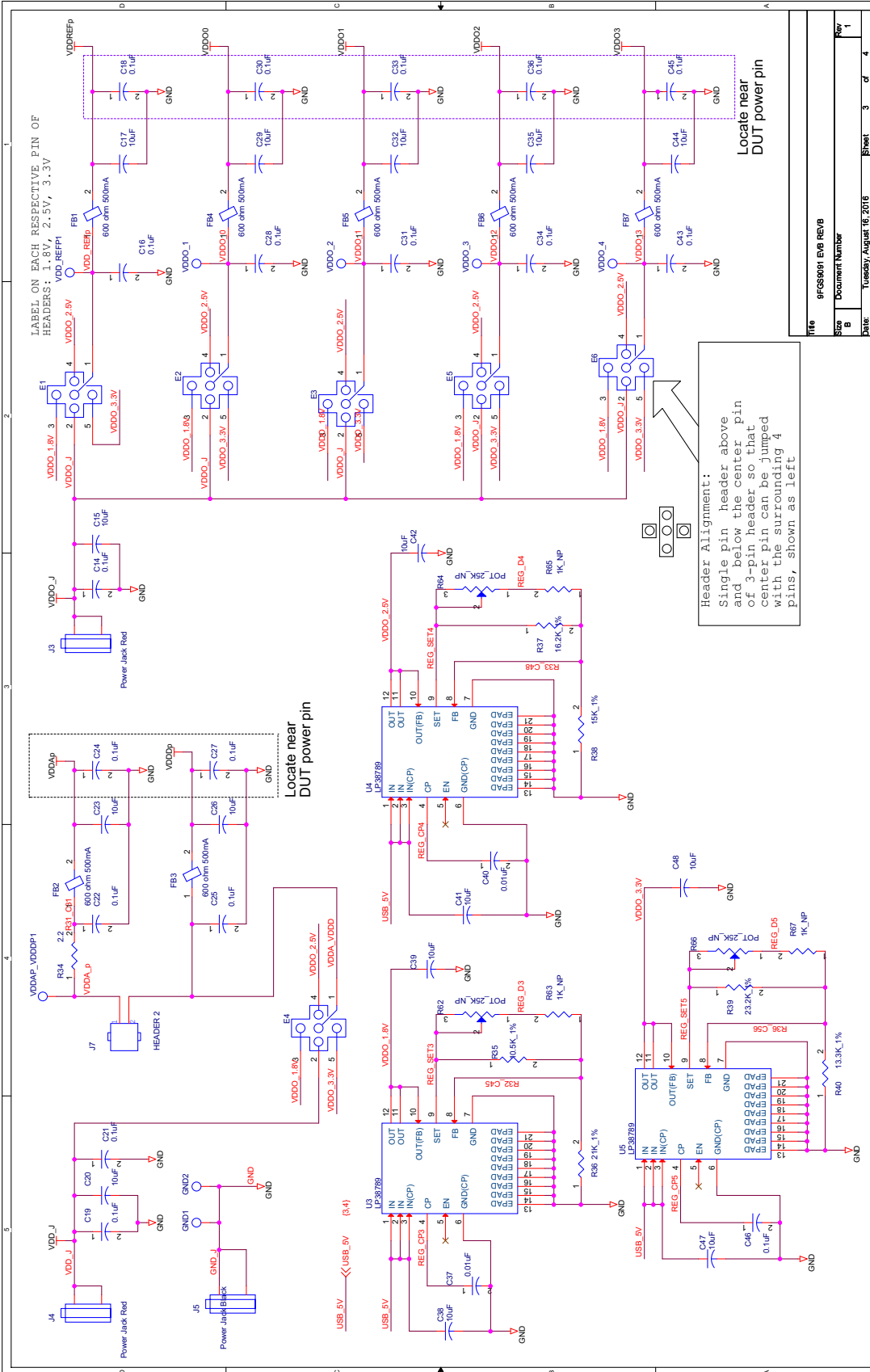
cut-table trace option:
1) Use SMA: don't cut; no load cap
2) No SMA: cut

Figure 6. 9FGV100x Evaluation Board Schematic - page 2



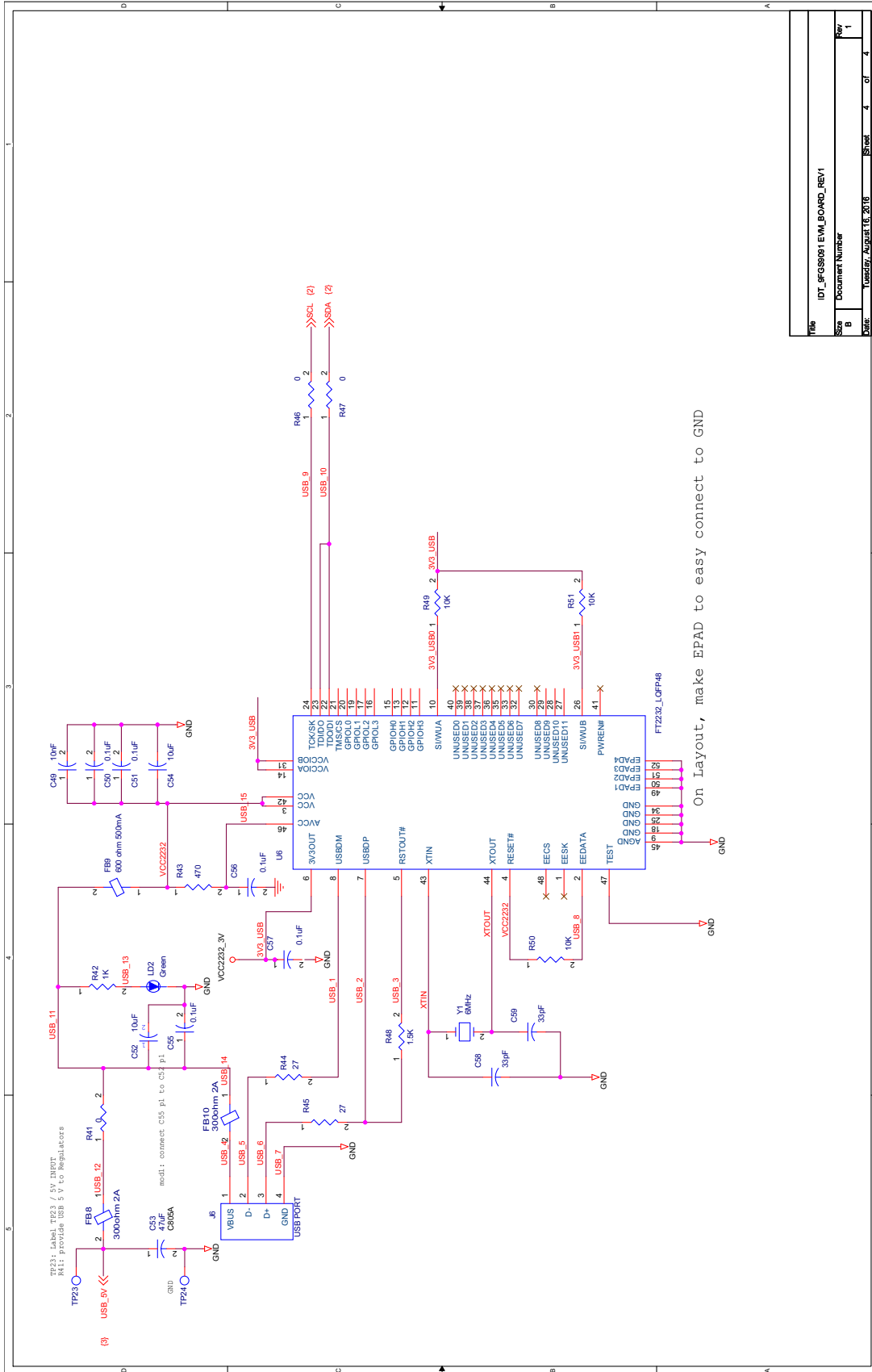
| | |
|-------|--------------------------|
| File | 9FGV1001 EVB rev6 |
| Size | Document Number |
| Page | 1 |
| Sheet | 2 of 4 |
| Date | Updated: August 16, 2018 |

Figure 7. 9FGV100x Evaluation Board Schematic – page 3



| | |
|-------|--------------------------|
| FILE | 9FGS0001 EMB REV9 |
| REV | 9 |
| DATE | Tuesday, August 18, 2016 |
| SHEET | 3 of 4 |

Figure 8. 9FGV100x Evaluation Board Schematic - page 4



| | |
|-------|------------------------------|
| Tab | IDT_9FGV1001_EVAL_BOARD_REV1 |
| Size | Document Number |
| B | |
| Rev | 1 |
| Date | 10/26/2016 |
| Sheet | 4 of 4 |

Ordering Information

| Orderable Part Number | Description |
|-----------------------|--|
| EVK9FGV1001 | Evaluation board with all differential outputs AC coupled. |
| EVK9FGV1002 | |
| EVK9FGV1004 | |

Revision History

| Revision Date | Description of Change |
|---------------|-----------------------|
| March 1, 2018 | Initial release. |



Corporate Headquarters
 6024 Silver Creek Valley Road
 San Jose, CA 95138 USA
www.IDT.com

Sales
 1-800-345-7015 or 408-284-8200
 Fax: 408-284-2775
www.IDT.com/go/sales

Tech Support
www.IDT.com/go/support

DISCLAIMER Integrated Device Technology, Inc. (IDT) and its affiliated companies (herein referred to as "IDT") reserve the right to modify the products and/or specifications described herein at any time, without notice, at IDT's sole discretion. Performance specifications and operating parameters of the described products are determined in an independent state and are not guaranteed to perform the same way when installed in customer products. The information contained herein is provided without representation or warranty of any kind, whether express or implied, including, but not limited to, the suitability of IDT's products for any particular purpose, an implied warranty of merchantability, or non-infringement of the intellectual property rights of others. This document is presented only as a guide and does not convey any license under intellectual property rights of IDT or any third parties.

IDT's products are not intended for use in applications involving extreme environmental conditions or in life support systems or similar devices where the failure or malfunction of an IDT product can be reasonably expected to significantly affect the health or safety of users. Anyone using an IDT product in such a manner does so at their own risk, absent an express, written agreement by IDT.

Integrated Device Technology, IDT and the IDT logo are trademarks or registered trademarks of IDT and its subsidiaries in the United States and other countries. Other trademarks used herein are the property of IDT or their respective third party owners. For datasheet type definitions and a glossary of common terms, visit www.idt.com/go/glossary. Integrated Device Technology, Inc.. All rights reserved.