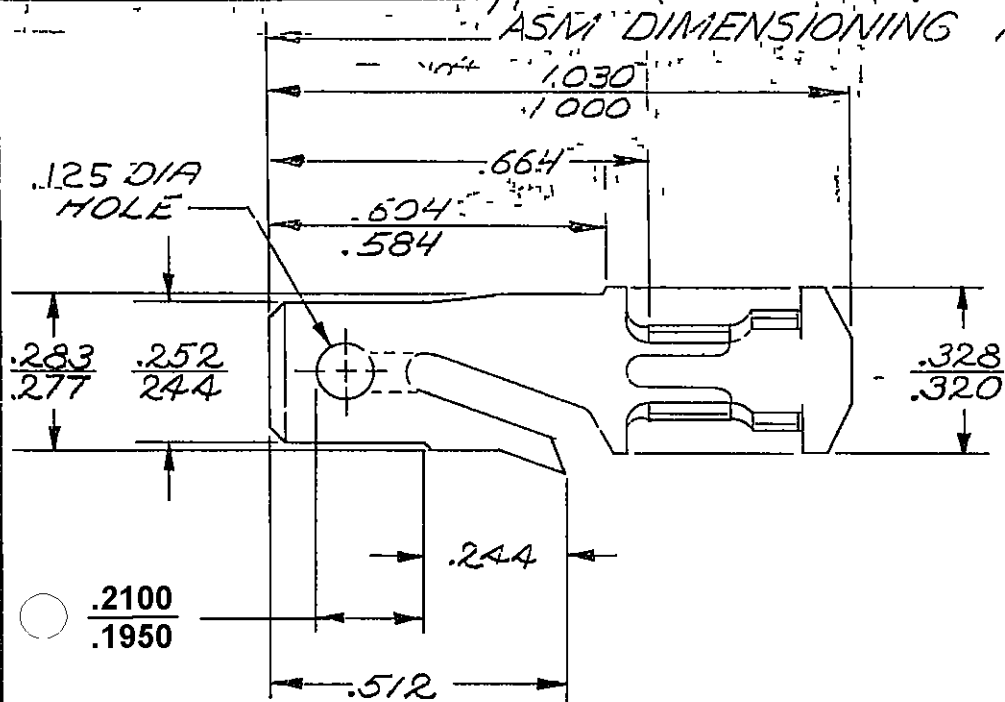


PACKARD ELECTRIC DIVISION
GENERAL MOTORS CORPORATION
WARREN, OHIO

DO NOT SCALE

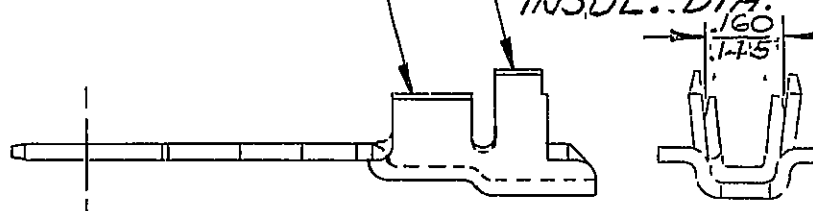
THIS DRAWING AND DESIGN HEREON CONSTITUTE A PROPRIETARY DESIGN OF PACKARD ELECTRIC DIVISION AND IS NOT TO BE DUPLICATED OR REPRODUCED WITHOUT AUTHORITY OF PACKARD ELECTRIC DIVISION

ASM DIMENSIONING POINT



CONDUCTOR WINGS FOR 0.8-0.5 MM² CABLE.

INSULATION WINGS FOR 2.40MM MAX. INSUL. DIA.



C02D1543

4174-A

-OUTLINE DRAWING-

PART NO		2965481		SIZE
				A
DATE	SYM	REVISION RECORD	C/N NO	
01SE82	-	ALL PREVIOUS DATA		
		REMOVED FROM REV		
		COL. THRU REV. "AY"		
		PICTURE REVISED.	82155	
01AU83	AZ	REV. SYM. ADVANCED	86126	
12MR91	-	.448 REF WAS .444	140675	
05DE05	AZ4	ADDED DIM .2100/.1950 AND		
		REMOVED DIM (1 PLC)	274727	

CODE NO 6900
 TOLERANCE UNLESS OTHERWISE SPECIFIED
 DECIMAL ±.005
 FRACTIONAL
 ANGULAR ± 2°

DWG DATE 3-19-57 SCALE NONE DR PLYLER
 ROUTING
 DEPT
 OUTST
 REFERENCE
 2962864 "D" SIZE-SHT 1
 CK *Reese* 1-8-60
 APPR *RJK* 1-11-60
 APPR *L. J. ...*

MATERIAL SPEC
 .0320 THK. SAE CA 2.60 BRASS
 1/2 HARD-TIN PLATED
 NAME
 TERMINAL-MALE-'56 SERIES

PART NO
2965481
 SIZE
A

- 1177-1414
- 16V
- 36V
- 82V
- 92AHT
- 53V
- 96V
- 4105H
- 12A
- 148P
- 172 FSV(3)