

# Model A - 3100 series

## Definite Purpose Contactor 3-pole, 120 FLA AC Coil

 File E75492

Users should thoroughly review the technical data before selecting a product part number. It is recommended that users also seek out the pertinent approvals files of the agencies/laboratories and review them to ensure the product meets the requirements for a given application.

### Features

- 3-pole contactors.
- Convenient "universal" mounting plate.
- Optional interlock/auxiliary switches available.

### Contact Data @ 25°C

**Arrangements:** 3 Form X (3PST-NO-DM).  
**Maximum Ratings:** See Contact Ratings Table.  
**Material:** Silver Cadmium Oxide.

### Coil Data @ 25°C

**Voltage:** 24 - 480 VAC, 50/60 Hz. See Coil Data Table below.  
**Insulation Class:** UL Class B (130°C).  
**Duty Cycle:** Continuous.

### Environmental Data

**Temperature Range:** Storage and Operating: -40°C – +65°C.  
**Flammability:** UL 94-HB housing.

### Mechanical Data

**Contact Termination:**  
**Type:** Box Lug with dual 0.250" (6.35 mm) quick connects.  
**Wire Size:** 2 – 4-0 Cu/Al AWG  
**Tightening Torque:** 100 in.-lbs.  
**Coil Termination:** 0.250" quick connect and a #6-32 screw.  
**Arc Cover:** Standard.  
**Weight:** 128 oz. (3640 g) approximately

### Contact Ratings

Full Load Amps	Number of Poles	Line Voltage	Locked Rotor Amps	Resistive Amps Rating	Maximum Horsepower		
					Voltage	Single Phase	Three Phase
120	3	240	720	150	110/120	10	-
		480	600	150	200/208	20	30
		600	480	150	240	25	40
					480	-	75
					600	-	75

### Coil Data

	24	120	208/240	277	480
Nominal Coil Voltage	24	120	208/240	277	480
Maximum Pickup Volts	20.4	93	176	235	374
Drop-Out Volts Range	6-15.6	20-70	40-135	65-180	150-270
Nominal Inrush VA @ 50 Hz	470	600	600	600	-
Nominal Inrush VA @ 60 Hz	400	510	510	510	510
Nominal Sealed VA @ 50 Hz	43	50	50	50	-
Nominal Sealed VA @ 60 Hz	40	48	48	40	48
Nominal DC Resistance - Ohms	.264	4.73	18.6	30.25	78

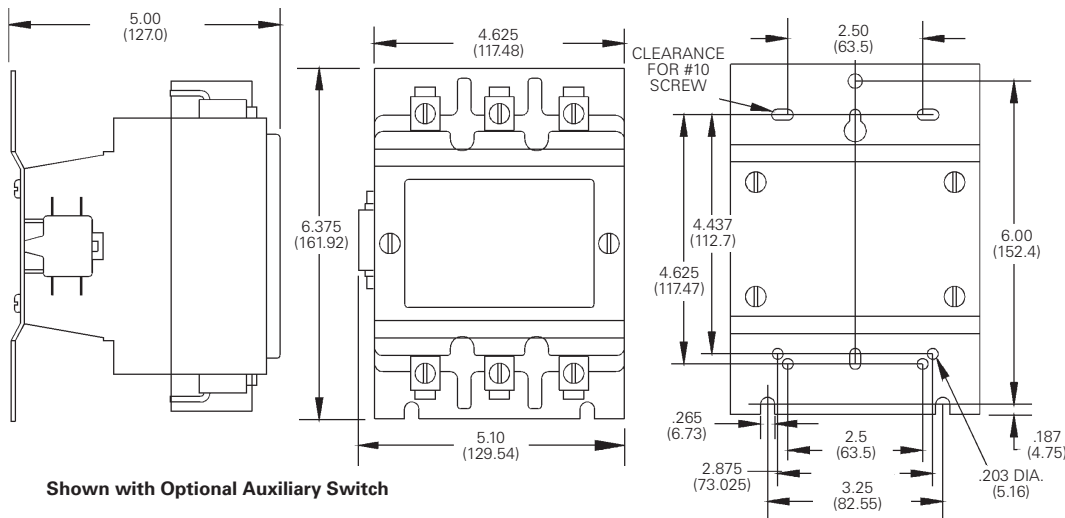
**Ordering Information**

<b>Typical Part No. ▶</b>	<b>3100</b>	-	<b>30</b>	<b>Q</b>	<b>12</b>	<b>999</b>	
<b>1. Series:</b> 3100 = 3-pole, 120 FLA contactor							
<b>2. Packaging:</b> Y = Individual Pack - = Bulk Pack A-ZZZ = Customer specific information (assigned by factory)							
<b>3. Pole Configuration:</b> 30 = 3 Form X (3PST-NO-DM)							
<b>4. Coil Voltage (50/60 Hz.):</b> Q = 24VAC    U = 208/240VAC    H = 480VAC T = 120VAC    V = 277VAC							
<b>5. Contact Ratings (Inductive):</b> 12 = 120 FLA							
<b>6. Customer ID Suffix:</b> 999 = Standard Model      000-998 = Factory assigned customer ID							
<b>7. Option Code:</b> Leave Blank = No customer-specific options      A - ZZ = Factory assigned customer-specific options.							

**Standard part numbers listed below are more likely to be available from stock.**

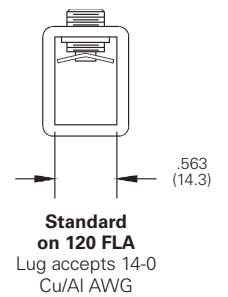
3100Y30Q12999CJ    3100Y30T12999CJ    3100Y30U12999CJ

**Outline Dimensions**



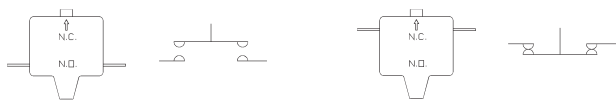
Shown with Optional Auxiliary Switch

**Termination**



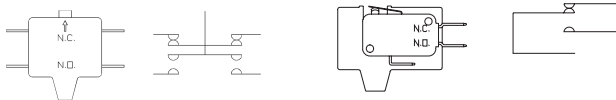
**Auxiliary Switches**

Various interlock / auxiliary switches are available for the Model A contactor.



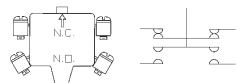
**NORMALLY OPEN  
-303 STYLE**

**NORMALLY CLOSED  
-331 STYLE**



**NORMALLY OPEN & CLOSED  
-332 STYLE**

**SPDT  
-337 & -341 STYLE**



**W/ #6-32 SCREW & SADDLE CLAMP  
-344 STYLE**

**Equipped with 0.250" (6.35) Quick Connect Terminals**

Description	Factory Modifications		Field Added Kits	
	Contact Config. NO	NC	Kit Catalog Number	Number of Kits Required
Single unit interlock configurations listed.	1	0	34300-303	1
	0	1	34300-331	1
Maximum of two. Must be same polarity.	1	1	34300-332	1
	2	0	34300-303	2
See footnote (1) for ratings.	0	2	34300-331	2
	2	2	34300-332	2
SPDT Circuit	1	1	34300-337	1
See footnote (2) for ratings.	2	2	34300-337	2
SPDT Dry Circuit, 0.1 amp max.	1	1	34300-341	1
Gold Flashed Contacts	2	2	34300-340	1

**Equipped with #6-32 Screw Terminals & Saddle Clamps**

Description	Factory Modifications		Field Added Kits	
	Contact Config. NO	NC	Kit Catalog Number	Number of Kits Required
Single unit interlock configurations listed.	1	0	34300-342	1
	0	1	34300-343	1
Maximum of two. Must be same polarity. (note 1)	1	1	34300-344	1

**Footnotes: Ratings of Auxiliary Interlocks / Switches**

(1) Contact Rating Single Circuit NO or NC and two circuit NO/NC:	(2) Contact Rating SPDT (337):
120V    240V    480V    600V	10A, 1/3 HP, 125 or 250 VAC
Break    3.0A    1.5A    0.75A    0.6A	1/2A, 125 VDC; 1/4A, 250 VDC:
Make    30A    15A    7.5A    6A	4A 120 VAC on Lamp Load
Continuous    10A    10A    10A    10A	

**Engineering Notes**

