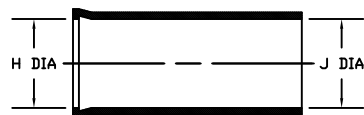
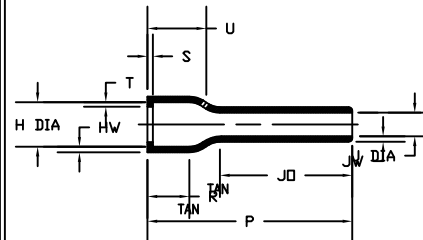


# NOTES

1. All dimensions are in  $\frac{\text{inches}}{\text{millimeters}}$
2. Dimensions appearing in table are as follows:
  - a - As Supplied
  - b - After Unrestricted Recovery



AS SUPPLIED



AFTER UNRESTRICTED RECOVERY

DIMENSIONING AND TOLERANCING PER ASME Y14.5M (ISO STANDARDS)

## REVISIONS

LTR	DESCRIPTION	DATE
A	INITIAL RELEASE PER ECO-12-016788	09/18/2012

## ORDERING INFORMATION

Base part number 202D2XX -12 -92 -0

Material dash number \_\_\_\_\_  
(See Compatability Chart)

Modification number \_\_\_\_\_


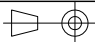
Color Designator \_\_\_\_\_

TABLE OF DIMENSIONS

PART NUMBER	H		J		P	JO	R	S	T	U	HW	JW
	Min	Max	Min	Max	±10%	±10%	Ref	Ref	Ref	±10%	±20%	±20%
202D211-12-92	.88 [22,4]	.45 [11,4]	.88 [22,4]	.25 [6,4]	4.17 [105,9]	3.40 [86,4]	.46 [11,7]	.12 [3,0]	.04 [1,0]	.56 [14,2]	.06 [1,52]	.045 [1,14]
202D221-12-92	1.01 [25,7]	.59 [15,0]	1.01 [25,7]	.29 [7,4]	4.77 [121,2]	3.88 [98,6]	.48 [12,2]	.12 [3,0]	.04 [1,0]	.59 [15,0]	.06 [1,52]	.045 [1,14]
202D232-12-92	1.16 [29,5]	.74 [18,8]	1.16 [29,5]	.33 [8,4]	5.46 [138,7]	4.44 [112,8]	.48 [12,2]	.12 [3,0]	.04 [1,0]	.61 [15,5]	.07 [1,78]	.045 [1,14]
202D242-12-92	1.34 [34,0]	.90 [22,9]	1.34 [34,0]	.38 [9,7]	6.28 [159,5]	5.15 [130,8]	.48 [12,2]	.12 [3,0]	.04 [1,0]	.62 [15,7]	.07 [1,78]	.045 [1,14]
202D253-12-92	1.47 [37,3]	1.16 [29,5]	1.47 [37,3]	.41 [10,4]	7.00 [177,8]	5.60 [142,2]	.55 [14,0]	.12 [3,0]	.065 [1,65]	.71 [18,0]	.08 [2,0]	.045 [1,14]
202D263-12-92	1.72 [43,7]	1.34 [34,0]	1.72 [43,7]	.48 [12,2]	8.00 [203,2]	6.42 [163,1]	.60 [15,2]	.12 [3,0]	.065 [1,65]	.78 [19,8]	.08 [2,0]	.045 [1,14]

Raychem Molded Parts  
CUSTOMER DRAWING

THIS DRAWING AND THE INFORMATION SET FORTH HEREON ARE THE PROPERTY OF TYCO ELECTRONICS CORPORATION, AND ARE TO BE HELD IN TRUST AND CONFIDENCE. PUBLICATION, DUPLICATION, DISCLOSURE OR USE FOR ANY PURPOSE NOT EXPRESSLY AUTHORIZED IN WRITING BY TYCO ELECTRONICS CORPORATION IS PROHIBITED.

UNLESS OTHERWISE SPECIFIED DIMENSIONS ARE METRIC AND INCHES ARE IN BRACKETS. DECIMAL TOLERANCES XXX ± 0.13 (.005) XX ± 0.25 (.01) X ± 0.50 (.10) ANGLE TOLERANCE .X ± 1 DEG.	DRAWN <b>M. Mazariegos</b> 9/07/12	APPROVED <b>S. Gravano</b> 9/07/12	 TE Connectivity
	RPN		
	CAD FILE:	202D2XX-12-92_CD	
TYCO ELECTRONICS RESERVES THE RIGHT TO AMEND THIS DRAWING AT ANY TIME. USERS SHOULD EVALUATE THE SUITABILITY OF THE PRODUCT FOR THEIR APPLICATION. © 2012 Tyco Electronics Corporation. All rights reserved.			TITLE Boot, Straight With Lip
THIRD ANGLE PROJECTION 			SIZE B CODE IDENT. NO. 06090 DWG. NO. 202D2XX-12-92
DO NOT SCALE THIS DRAWING			SHEET 1 OF 1

## COMPATABILITY CHART

MATERIAL DASH NO.	MATERIAL DESCRIPTION	RT SPEC	COATING SLASH NO.	COATING S NO.	COATING DESCRIPTION
-12	*VITON, Flexible	RT-1312			

If this document is printed it becomes uncontrolled. Check for the latest revision