

**\*\*NOTE\*\***  
SEE PAGE 2 FOR BOARD LAYOUTS

CHARACTERISSTICS  
MATERIALS

SHELL : BRASS  
SHELL PLATING : NICKEL  
NUT : BRASS  
NUT PLATING : NICKEL  
LATCH SLEEVE : BRASS  
LATCH SLEEVE PLATING : NICKEL  
CONTACTS : COPPER ALLOY  
CONTACT PLATING : 7µ" GOLD PLATED OVER 196µ" NICKEL MIN.  
INSULATOR : PPS (HIGH TEMPERATURE)  
O-RING: SILICONE

MECHANICAL

DURABILITY: 5000 CYCLES  
OPERATING TEMP. RANGE: -40° C ~ +200° C  
PROCESS TEMPERATURE : 260°C FOR 5 SECONDS  
MAX. TORQUE VALUE : 9.0 Nm [79.0 IN/lbs]  
SHIELDING: 75dB @ 10MHz  
40dB @ 1GHz

IP RATING: 67

822K YYY - 2 1 3 R 00 1

SERIES 16.00 [0.630]

# OF POSITIONS (Ex. 002) \*\*SEE CHART A\*\*

2 = FEMALE

VERTICAL (PANEL MOUNT)

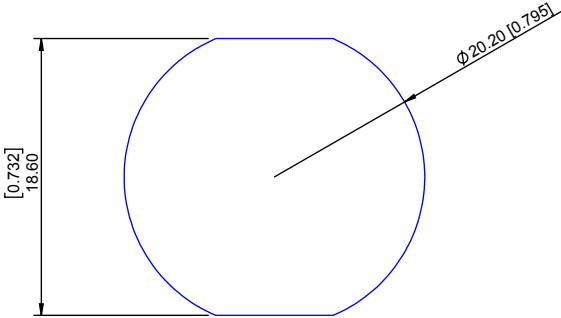
1 = GOLD FLASH

RoHS COMPLIANT

NICKEL/CHROME PLATED SHELL

CHART A ● = KEY LOCATION \*\*VIEW FROM TERMINATION END\*\*

<p>2 POSITION 25 AMP MAX. PIN Ø = 2.00 [0.079]</p> <p>CONTACT RESISTANCE = 3 mΩ TEST VOLTAGE = 2100V WORKING VOLTAGE = 700V</p>	<p>3 POSITION 17 AMP MAX. PIN Ø = 1.60 [0.063]</p> <p>CONTACT RESISTANCE = 4 mΩ TEST VOLTAGE = 2400V WORKING VOLTAGE = 800V</p>	<p>4 POSITION 15 AMP MAX. PIN Ø = 1.30 [0.051]</p> <p>CONTACT RESISTANCE = 5 mΩ TEST VOLTAGE = 1850V WORKING VOLTAGE = 615V</p>	<p>6 POSITION 12 AMP MAX. PIN Ø = 1.30 [0.051]</p> <p>CONTACT RESISTANCE = 5 mΩ TEST VOLTAGE = 1350V WORKING VOLTAGE = 450V</p>
---	---	---	---



PANEL CUTOUT

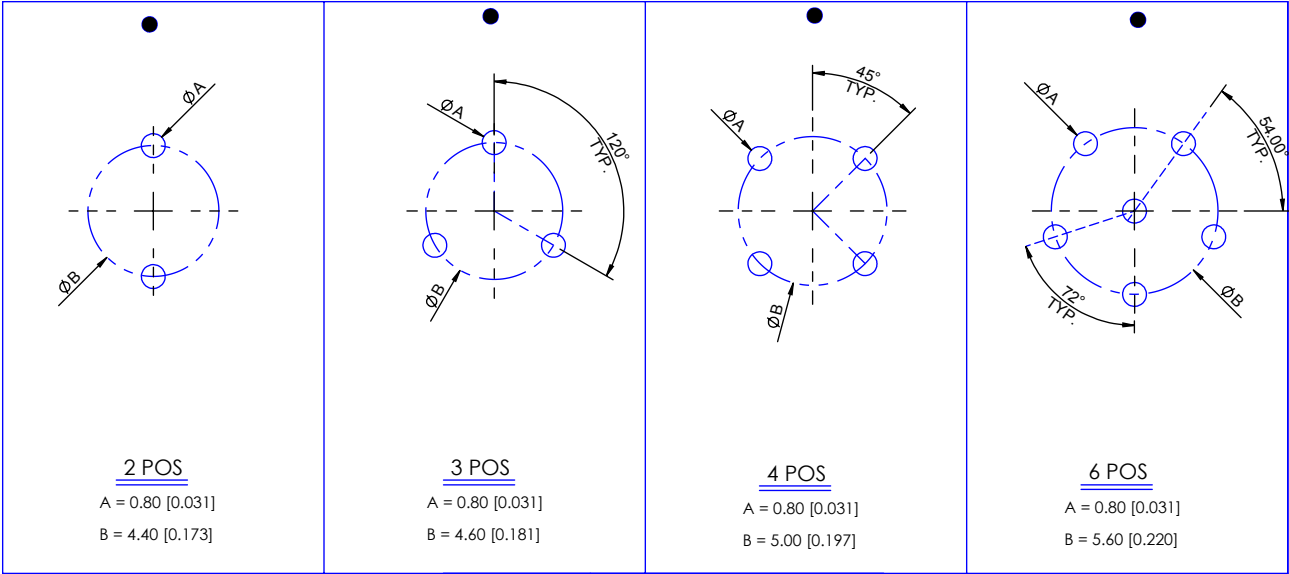
TOLERANCE = +0.10, -0.0  
[+0.004, -0.00]

RoHS COMPLIANT

	THESE DRAWINGS AND SPECIFICATIONS ARE THE PROPERTY OF NorComp AND SHALL NOT BE REPRODUCED, COPIED OR USED AS THE BASIS FOR THE MANUFACTURE OR SALE OF APPARATUS WITHOUT WRITTEN PERMISSION.	NorComp	DRAWN: M. SIGMON	DATE: 02-25-16	SCALE: N.T.S.	SHEET 1	OF 2	REV: 3
						DWG NO. 822KYYY-213R001		

BOARD LAYOUTS

● = KEY LOCATION



RoHS COMPLIANT



THESE DRAWINGS AND SPECIFICATIONS ARE THE PROPERTY OF NorComp AND SHALL NOT BE REPRODUCED, COPIED OR USED AS THE BASIS FOR THE MANUFACTURE OR SALE OF APPARATUS WITHOUT WRITTEN PERMISSION.

NorComp

DRAWN: M. SIGMON	DATE: 02-25-16	SCALE: N.T.S.	SHEET 2	OF 2	REV: 3
			DWG NO. 822KYYY-213R001		