

**RPM9000 Series**

**MIL/COTS AC 1-PH, IEC Inlet EMI Power Line Filter**

**RPM9000  
MILITARY/ COTS TO 20A  
IEC 320 INLET STYLE  
MIL-STD-461/ DO-160**



**SPECIFICATIONS**

Operating Freq.	: 50/60Hz
Max. Operating Voltage	: 250VAC
Ambient Temperature	: -25 to 55C
Hipot Rating (L-G)	: 1800VDC
Terminals (-T)	: Q: 0.25x0.032 QDS
Typical Leakage Current	<3.5mA
Applications	: Mil-461/ DO-160

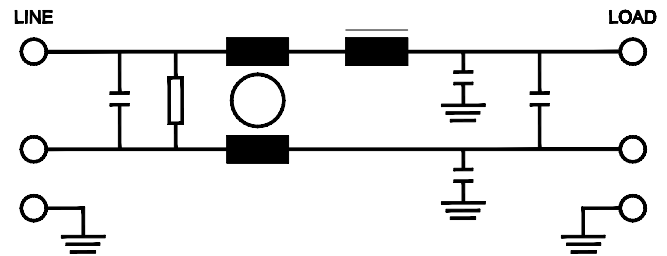
**TYPICAL INSERTION LOSS, dB  
(50/50ohm)**

FREQ (MHz)	.01	.15	.5	1	10	1000	10000
CM(dB)	16	38	50	60	50	45	35
DM(dB)	28	45	60	60	60	-	-

**PART NUMBER/ ORDERING**

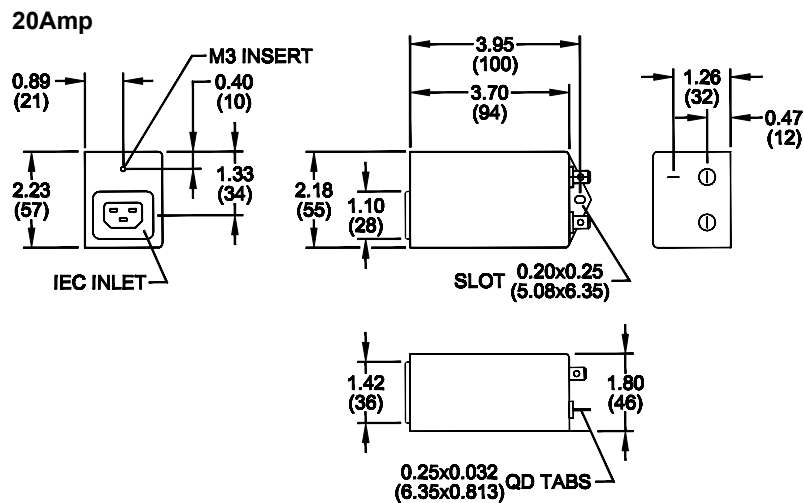
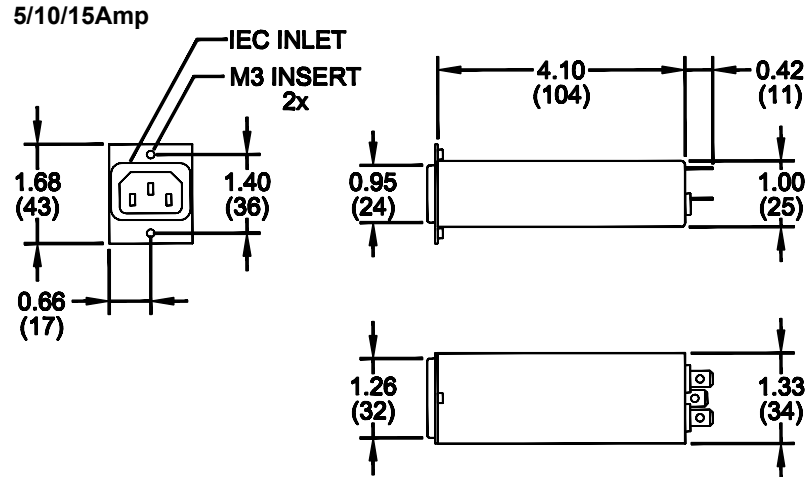
RPM9000	-X (Amps)	-T	Weight LBS (KG) Typ.
	5	QD	0.5 (0.2)
	10		0.5 (0.2)
	15		0.5 (0.2)
	20		0.8 (0.4)

**SCHEMATIC**



Reference purposes only.  
Specifications are subject to change.  
Consult factory to verify specifications.

## RPM9000 Mechanical Dimensions



TYPICAL TOLERANCE: +/-0.02 (0.50)