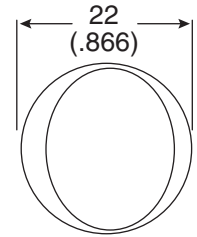
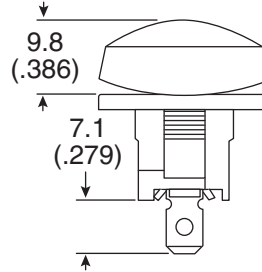
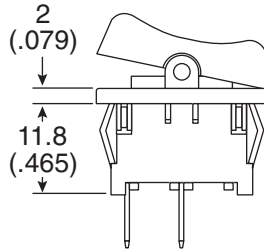
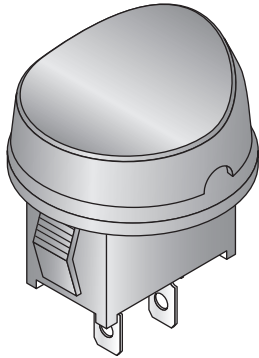
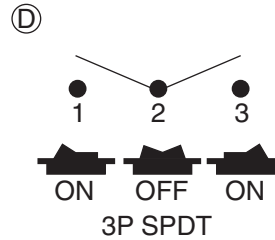
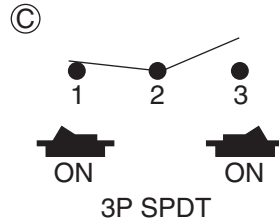
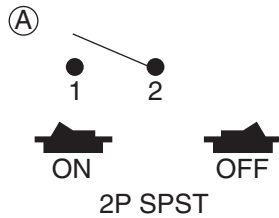


Dimensions: mm (in.)



Function

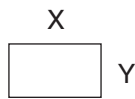


Terminal



.187" Sq.

Cut-out



	X	Y
0.75~1.25	19.2-0.1	13.0+0.1
1.25~2	19.4-0.1	13.0+0.1
2~3	19.8-0.1	13.0+0.1

Mechanical Specifications:

- Rating: 10A / 125VAC; 6A / 250VAC;
- Contact resistance: 50mΩ max.
- Insulation resistance: 500VDC 100MΩ min.
- Dielectric strength: 1500VAC for 1 min.

Note:

- RoHS Compliant

Mouser Stock No.	Button	Function
103-R13-211A-02-EV	Black	A
103-R13-211C-02-EV	Black	C
103-R13-211D-02-EV	Black	D

Rocker Switches

103-R13-211A-02-EV, 103-R13-211C-02-EV, 103-R13-211D-02-EV

