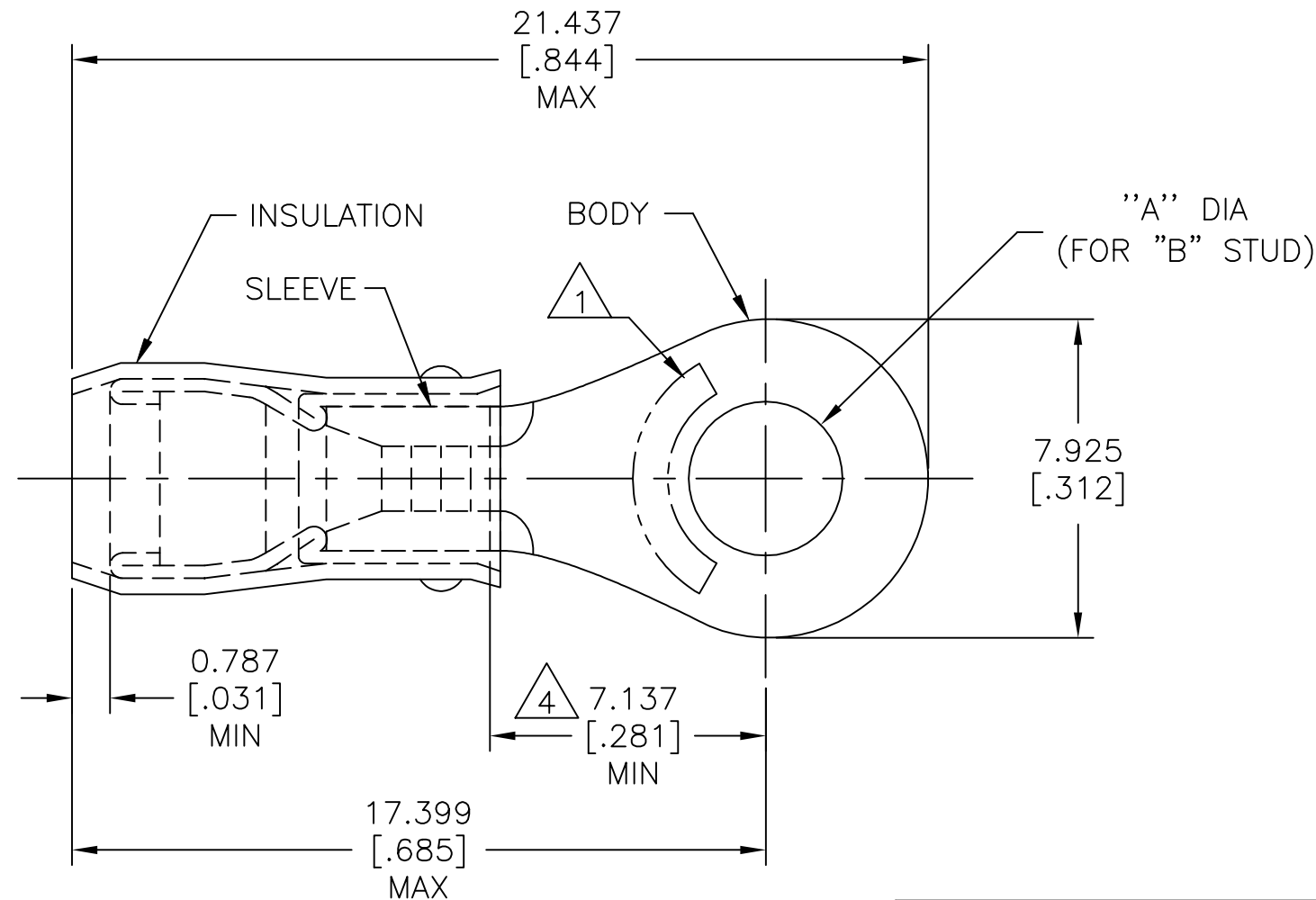


THIS DRAWING IS UNPUBLISHED. RELEASED FOR PUBLICATION  
 © COPYRIGHT - By - ALL RIGHTS RESERVED.

| REVISIONS |     |                           |           |     |      |
|-----------|-----|---------------------------|-----------|-----|------|
| P         | LTR | DESCRIPTION               | DATE      | DWN | APVD |
|           | AC1 | REVISED PER ECO-16-001584 | 04FEB2016 | NK  | DR   |
|           | AC2 | REVISED PER ECO-17-007400 | 18DEC2017 | RS  | DR   |



|                                |                                |                                |
|--------------------------------|--------------------------------|--------------------------------|
| <b>AMP</b><br>WIRE RANGE       | E13288<br>Listed               | LR7189<br>Certified            |
| 16-14 AWG<br>SOLID OR STRANDED | 16-14 AWG<br>SOLID OR STRANDED | 16-14 AWG<br>SOLID OR STRANDED |

- △ 1 STAMP AMP 16-14\* APPROX AS SHOWN.
- 2 WIRE INSULATION :  $\phi 2.669-3.810[\phi .105-.150]$ .
- 3 BODY MATERIAL THK:  $0.787\pm 0.051[.031\pm .002]$ .
- △ 4 APPLIES FROM EDGE OF METAL WIRE BARREL TO CENTER OF STUD HOLE

|                         |         |                                |          |                  |           |
|-------------------------|---------|--------------------------------|----------|------------------|-----------|
| -                       | [10]    | $5.004\pm 0.076[.197\pm .003]$ | 100      | LOOSE PIECE, BOX | 5-51864-1 |
| -                       | M4[8]   | $4.343\pm 0.076[.171\pm .003]$ | 100      | LOOSE PIECE, BOX | 4-51864-1 |
| -                       | M3.5[6] | $3.683\pm 0.076[.145\pm .003]$ | 100      | LOOSE PIECE, BOX | 3-51864-1 |
| MS25036-153 CLASS 2     | M4[8]   | $4.343\pm 0.076[.171\pm .003]$ | 5000     | ON TAPE, REEL    | 51864-5   |
| MS25036-108 CLASS 2     | [10]    | $5.004\pm 0.076[.197\pm .003]$ | 5000     | ON TAPE, REEL    | 51864-4   |
| MS25036-107 CLASS 2     | M3.5[6] | $3.683\pm 0.076[.145\pm .003]$ | 5000     | ON TAPE, REEL    | 51864-3   |
| MS25036-108 CLASS 1 & 2 | [10]    | $5.004\pm 0.076[.197\pm .003]$ | 1000     | LOOSE PIECE      | 51864-2   |
| MS25036-153 CLASS 1 & 2 | M4[8]   | $4.343\pm 0.076[.171\pm .003]$ | 1000     | LOOSE PIECE      | 51864-1   |
| MS25036-107 CLASS 1 & 2 | M3.5[6] | $3.683\pm 0.076[.145\pm .003]$ | 1000     | LOOSE PIECE      | 51864     |
| MILITARY P/N AND CLASS  | "B"     | DIM "A"                        | QUANTITY | PACKAGE TYPE     | PART NO   |

**AMP INCORPORATED**  
CUSTOMER SERVICE SYSTEMS

FOR ADDITIONAL PRODUCT INFORMATION OR COPIES OF DRAWINGS AND TECHNICAL DOCUMENTS  
 PRODUCT INFORMATION CENTER  
1-800-522-6752

FOR APPLICATION TOOLING INFORMATION  
 TOOLING ASSISTANCE CENTER  
1-800-722-1111

FOR ORDER ENTRY  
1-800-526-5142

MAX RECOMMENDED OPERATING TEMPERATURE:  
105°C[221°F] MAX

VOLTAGE RATING:  
300 V MAX

CIRCULAR MIL AREA:  
1.04-2.62mm<sup>2</sup>[2050-5180] CIR MILS  
SOLID OR STRANDED

THIS DRAWING IS A CONTROLLED DOCUMENT.

DIMENSIONS: mm [INCHES]

TOLERANCES UNLESS OTHERWISE SPECIFIED:

|        |               |
|--------|---------------|
| 0 PLC  | ± -           |
| 1 PLC  | ± -           |
| 2 PLC  | ± -           |
| 3 PLC  | ± 0.127[.005] |
| 4 PLC  | ± -           |
| ANGLES | ± -           |

MATERIAL: BODY & SLEEVE: COPPER PER ASTM B-152; INSULATION: NYLON

FINISH: BODY & SLEEVE: TIN PLATE PER ASTM B545; INSULATION: COLOR-BLUE

DWN: JR RUTH 27OCT99  
 CHK: RE HERSEY 27OCT99  
 APVD: C PRESNELL 27OCT99

PRODUCT SPEC: UL 486 A-B  
 APPLICATION SPEC: 114-2157

WEIGHT: -

**TE** TE Connectivity

NAME: TERMINAL, RING TONGUE, PIDG,<sup>TM</sup> WIRE SIZE, 16-14 AWG

SIZE: A3  
 CAGE CODE: 00779  
 DRAWING NO: C-51864

RESTRICTED TO: -

CUSTOMER DRAWING

SCALE: NTS  
 SHEET: 1 of 2  
 REV: AC2

THIS DRAWING IS UNPUBLISHED.

RELEASED FOR PUBLICATION

ALL RIGHTS RESERVED.

© COPYRIGHT - By -

REVISIONS

| P | LTR | DESCRIPTION | DATE | DWN | APVD |
|---|-----|-------------|------|-----|------|
| - | -   | SEE SHEET 1 | -    | -   | -    |

3 STRIPES EQUALLY SPACED FOR COLOR CODE: SEE TABLE

AMP WIRE RANGE

SEE TABLE STRANDED

BODY

"A" DIA (FOR "B" STUD)

INSULATION

SLEEVE



7.925 [.312]



1 STAMP AMP APPROX AS SHOWN SEE TABLE BELOW.

2 WIRE INSULATION :  $\phi 1.600-3.302[\phi 0.063-.130]$  FOR 16 AWG,  $\phi 1.981-3.302[\phi 0.078-.130]$  FOR 14 AWG.

3 BODY MATERIAL THK:  $0.787 \pm 0.051[.031 \pm .002]$ .



4 APPLIES FROM EDGE OF METAL WIRE BARREL TO CENTER OF STUD HOLE

0.787 [.031] MIN

7.137 [.281] MIN

18.974 [.747] MAX

23.012 [.906] MAX

|                        |              |     |           |         |                                  |          |                  |           |
|------------------------|--------------|-----|-----------|---------|----------------------------------|----------|------------------|-----------|
| -                      | BLUE         | 16* | 16        | M3.5[6] | $3.683 \pm 0.076[.145 \pm .003]$ | 100      | LOOSE PIECE, BOX | 6-51864-1 |
| M7928/1-50 CLASS 2     | GREEN        | 14* | 14        | M4[8]   | $4.343 \pm 0.076[.171 \pm .003]$ | 5000     | ON TAPE, REEL    | 1-51864-7 |
| M7928/1-51 CLASS 2     | GREEN        | 14* | 14        | [10]    | $5.004 \pm 0.076[.197 \pm .003]$ | 5000     | ON TAPE, REEL    | 1-51864-5 |
| M7928/1-42 CLASS 2     | BLUE         | 16* | 16        | [10]    | $5.004 \pm 0.076[.197 \pm .003]$ | 5000     | ON TAPE, REEL    | 1-51864-3 |
| M7928/1-50 CLASS 1 & 2 | GREEN        | 14* | 14        | M4[8]   | $4.343 \pm 0.076[.171 \pm .003]$ | 1000     | LOOSE PIECE      | 1-51864-1 |
| M7928/1-41 CLASS 1 & 2 | BLUE         | 16* | 16        | M4[8]   | $4.343 \pm 0.076[.171 \pm .003]$ | 1000     | LOOSE PIECE      | 1-51864-0 |
| M7928/1-51 CLASS 1 & 2 | GREEN        | 14* | 14        | [10]    | $5.004 \pm 0.076[.197 \pm .003]$ | 1000     | LOOSE PIECE      | 51864-9   |
| M7928/1-49 CLASS 1 & 2 | GREEN        | 14* | 14        | M3.5[6] | $3.683 \pm 0.076[.145 \pm .003]$ | 1000     | LOOSE PIECE      | 51864-8   |
| M7928/1-42 CLASS 1 & 2 | BLUE         | 16* | 16        | [10]    | $5.004 \pm 0.076[.197 \pm .003]$ | 1000     | LOOSE PIECE      | 51864-7   |
| M7928/1-40 CLASS 1 & 2 | BLUE         | 16* | 16        | M3.5[6] | $3.683 \pm 0.076[.145 \pm .003]$ | 1000     | LOOSE PIECE      | 51864-6   |
| MILITARY P/N AND CLASS | STRIPE COLOR |     | WIRE SIZE | "B"     | DIM "A"                          | QUANTITY | PACKAGE TYPE     | PART NO   |

AMP INCORPORATED CUSTOMER SERVICE SYSTEMS

MAX RECOMMENDED OPERATING TEMPERATURE: 105°C[221°F] MAX

THIS DRAWING IS A CONTROLLED DOCUMENT.

DWN JR RUTH 27OCT99

CHK RE HERSEY 27OCT99

APVD C PRESNELL 27OCT99

PRODUCT SPEC

APPLICATION SPEC

114-2157

WEIGHT -

CUSTOMER DRAWING

TE Connectivity

NAME: TERMINAL, RING TONGUE, I.R., PIDG™, WIRE SIZE, 16 & 14 AWG

SIZE: A3 CAGE CODE: 00779 DRAWING NO: 51864 RESTRICTED TO: -

SCALE: NTS SHEET: 2 OF 2 REV: AC2

FOR ADDITIONAL PRODUCT INFORMATION OR COPIES OF DRAWINGS AND TECHNICAL DOCUMENTS

PRODUCT INFORMATION CENTER 1-800-522-6752

FOR APPLICATION TOOLING INFORMATION

TOOLING ASSISTANCE CENTER 1-800-722-1111

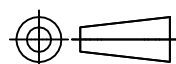
FOR ORDER ENTRY

1-800-526-5142

VOLTAGE RATING: 300 V MAX

WIRE RANGE: 16 14 CIRC MIL AREA: 1.42mm² [2800] 2.15mm² [4234] STRANDED

DIMENSIONS: mm [INCHES]



TOLERANCES UNLESS OTHERWISE SPECIFIED:

0 PLC ± - 1 PLC ± - 2 PLC ± - 3 PLC ± 0.127[.005] 4 PLC ± - ANGLES ± -

MATERIAL BODY & SLEEVE: COPPER PER ASTM B-152 INSULATION: NYLON

FINISH BODY & SLEEVE: TIN PLATE PER ASTM B545 INSULATION: COLOR-BLUE