

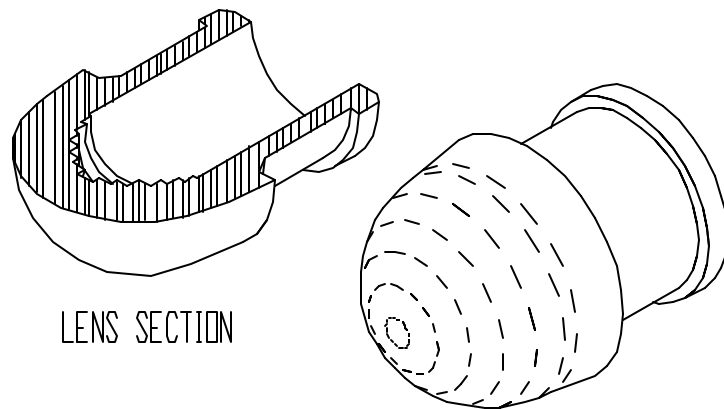
DATE

REVISIONS

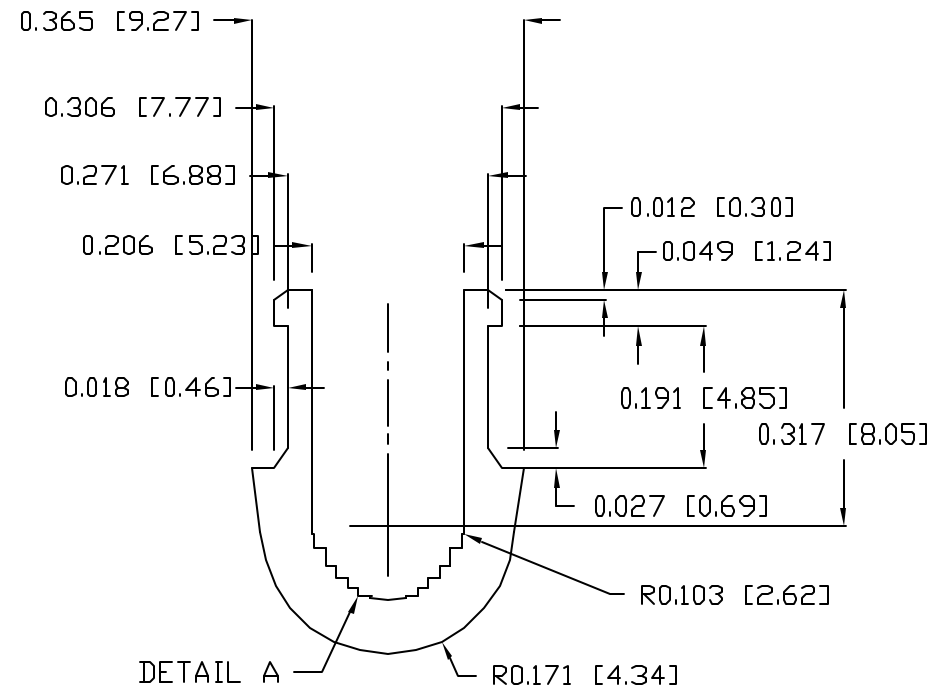
REV

DRAWING NUMBER  
SSN-LX690L1-C

REV

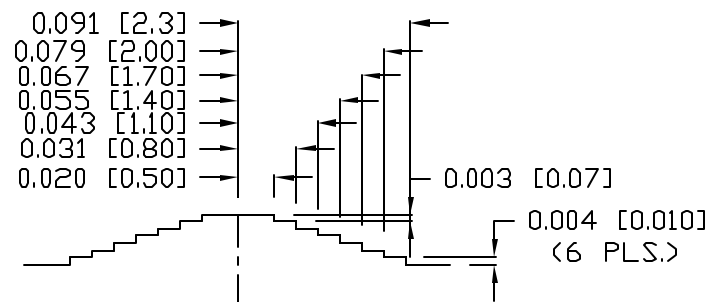


LENS SECTION



DETAIL A

R0.171 [4.34]



DETAIL A

MATERIAL: CLEAR POLYCARBONATE

UNITS in. [mm]

292 E. HELLEN ROAD  
PALATINE, ILLINOIS 60067  
(708) 359-2790

CONFIDENTIAL INFORMATION  
THE INFORMATION CONTAINED IN THIS DOCUMENT IS THE PROPERTY OF LUMEX OPTO/COMPONENTS, INC. EXCEPT AS SPECIFICALLY AUTHORIZED IN WRITING BY LUMEX OPTO/COMPONENTS, INC., THE HOLDER OF THIS DOCUMENT SHALL KEEP ALL INFORMATION CONTAINED HEREIN CONFIDENTIAL AND SHALL PROTECT SAME IN WHOLE OR IN PART FROM DISCLOSURE AND DESEMINATION TO ALL THIRD PARTIES.

DATE: 8-14-95

DWN:

CHK'D:

APPD:

SCALE: N/A

PANEL INDICATOR LENS FOR TULIP INDICATOR

PAGE 1 OF 1

DRAWING NUMBER  
SSN-LX690L1-C

REV