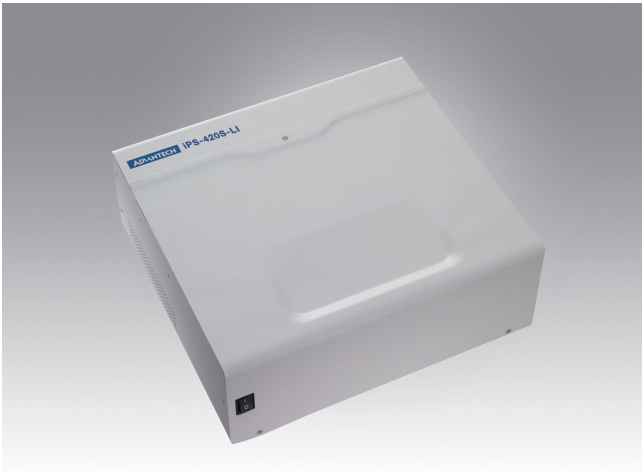


IPS-M420S

420 Wh Intelligent Power Storage System



Features

- Contains environmentally-friendly, long lifecycle rechargeable batteries
- 170W DC output for integration of various devices
- Fanless design for hospital environment
- Swappable battery pack design for quick and easy replacement
- 2 V_{DC} output with simultaneous power support
- Safety protection prevents against over charge and discharge
- "AMiS_Link" software solution for remote battery management

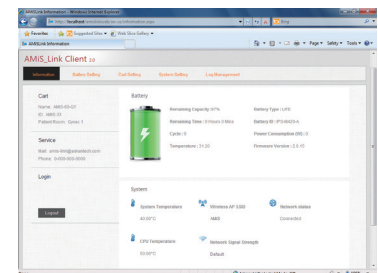


Specifications

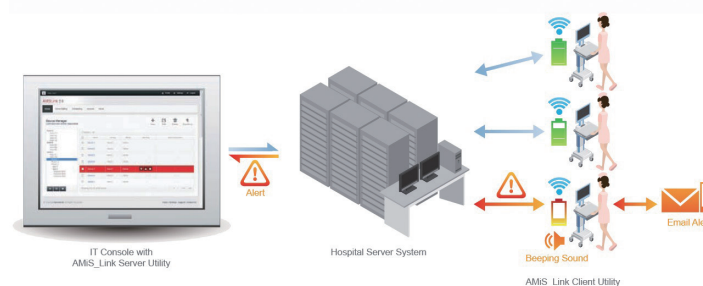
Power Supply	Battery Type	Lithium-ion
	Battery Capacity	420 Wh
	Battery Lifespan	Capacity 80%, 2000cycles or 2 years (Depends on which term come first)
	Charge Time	≤ 3hr.400Wh
	Input Voltage	100 ~ 240 V _{AC} , 50 ~ 60 Hz, Max 4.5 A
	DC Output Voltage	System 1: 19 V _{DC} , Max. 6 A System 2: 12 V _{DC} , Max. 5 A
	Charging Status Indicators	LEDs with continuous readout; intelligent software
I/O Ports	DC Output Interface	DC jack (4-pin locking mini-din connector)
	Communication Interface	RS-232
Environment	Vibration	5 ~ 500 Hz 1 G
	Operating Temperature	30° C
	Cooling System	Fanless
	Water Resistance	IP67 DC output connector
Physical Characteristics	Dimensions	282 x 260 x 101 mm (11.1" x 10.2" x 3.9")
	Weight	8 kg
Certifications	CE, FCC Class B certified, CCC	

Power Management Software

AMiS_Link	Capabilities	Battery capacity indicator Alerts (battery capacity, temperature, warning) Battery life cycle statistics Report & log file Client installation & server installation (Optional) Multi-language support, including Traditional Chinese, Simplified Chinese, English, German and Dutch
-----------	--------------	---

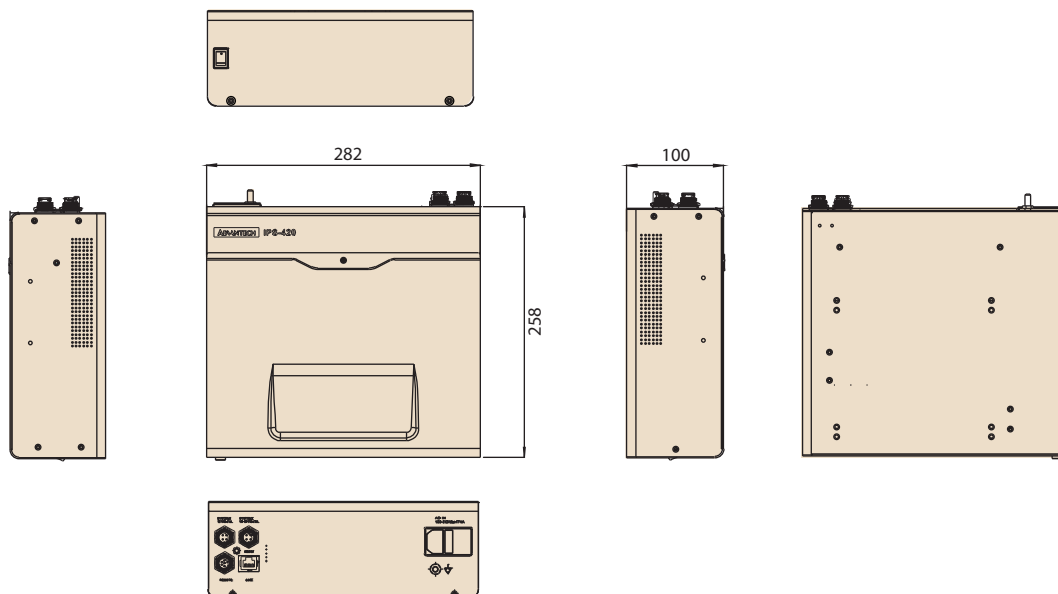


AMiS_Link Software Solution for Remote Battery Management



Dimensions

Unit: mm



Ordering Information

Part Number	Cell Type	Battery Capacity	Lifecycle	Charge time	Weight	Remarks
iPS-M420-LID-SE	Li-ion	420 Wh	Capacity 80%, 2000cycles or 2 years	≤ 3hr.400Wh	8.5 kg	
iPS-M420A-LID-SE	Li-ion	420 Wh	Capacity 80%, 2000cycles or 2 years	≤ 3hr.400Wh	8.5 kg	For AMiS cart only

Packing List (iPS-M420-LID-SE)

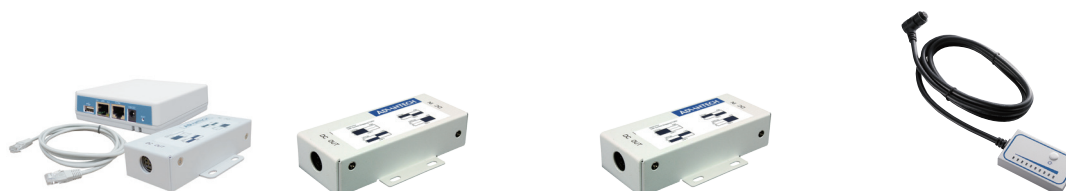
Part Number	Part Description	Quantity
1700020364-01	4-pin to Ring Terminal cable (150 cm)	1
1700020371-01	4-pin to DC Jack cable (180 cm)	1
IPS-REMT-00-A0E	6-pin remote control cable	1
1700019500	RJ-45 to RS-232 console cable (180 cm)	1
2190000902	2-year warranty card	1

Rear I/O



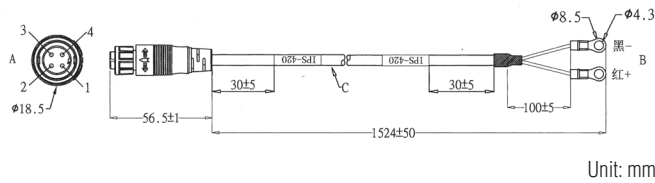
1. System 2: 12 V_{DC}, 5 A
2. System 1: 19 V_{DC}, 6 A
3. 6-pin remote control connector
4. RJ-45 (to RS-232) connector
5. AC In and AC On/Off switch
6. AC input switch
7. Ground pole

Accessories



Part Number	IPS-GW-1234-AE	IPS-CONV-DD-A2E	IPS-CONV-DD-B2E	IPS-REMT-00-A0E
Description	Smart Kit	DC to DC Converter	DC to DC Converter	Battery Remote Control
Remarks	<ul style="list-style-type: none"> IOT gateway DC to DC converter COM port cable 4-pin to 4-pin cable 4-pin to DC Jack cable AMiS_Link server management tool 	<ul style="list-style-type: none"> Connector type: 4-pin Input: 12 ~ 19 V, 8 ~ 3 A Output: <ul style="list-style-type: none"> Mode 1: 12 V, 6 A Mode 2: 15 V, 5 A Mode 3: 16 V, 5 A Mode 4: 19 V, 4 A 	<ul style="list-style-type: none"> Connector Type: 4-pin Input: 12 ~ 24 V, 8 ~ 3 A Output: <ul style="list-style-type: none"> Mode 1: 12 V, 6 A Mode 2: 16 V, 5 A Mode 3: 20 V, 4 A Mode 4: 24 V, 4 A 	<ul style="list-style-type: none"> 10 level LED indicator to display battery status Waterproof cable with 180cm

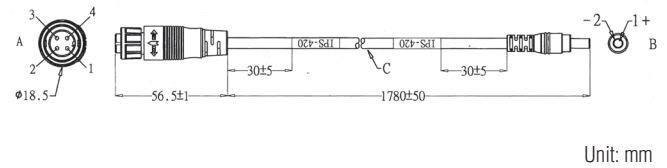
Cable Information



Unit: mm

1700019666

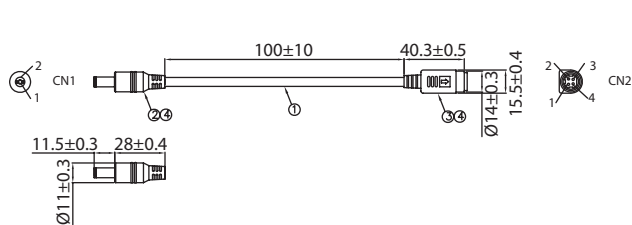
4-pin to Ring Terminal cable (152 cm)



Unit: mm

1700019667

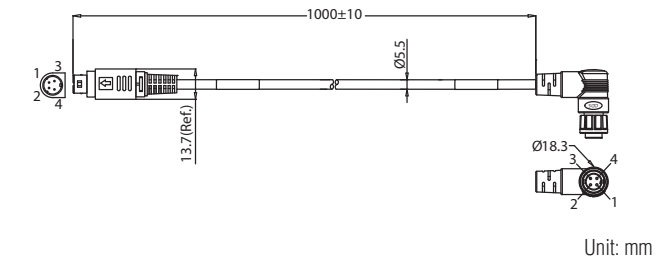
4-pin to DC Jack cable (178 cm)



Unit: mm

1700027393-01

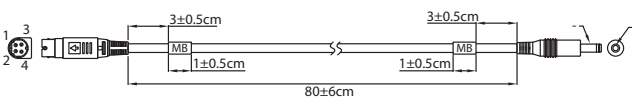
M Cable M-DIN 4P(F)/DC Jack (10 cm)



Unit: mm

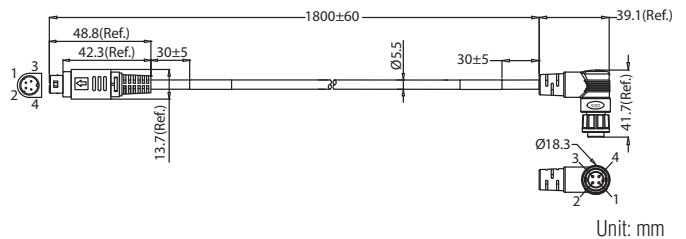
1700027293-01

4-pin to 4-pin DC Medical (100 cm)



1700018916

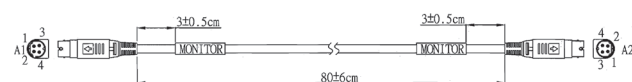
4-pin to DC Jack (80 cm)



Unit: mm

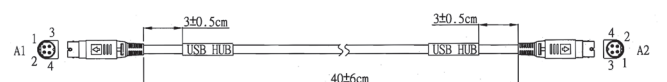
1700019486

4-pin to 4-pin DC Medical (180 cm)



1700025835-01

4-pin to 4-pin (80 cm)



1700018921

4-pin to 4-pin (40 cm)