

# MICRO SWITCH

FREEPORT ILLINOIS, U.S.A  
A DIVISION OF HONEYWELL  
FED. MFG. CODE 91929

# ASSEMBLY- PUSHBUTTON SWITCH

CATALOG LISTING

## 4PB714-T2

MILITARY P/N  
M8805/23-003

4PB714-T2

PAGE 1 OF 1

REPLACES

RELEASE NO. PR785

28 OCT 98

J A F

CHECK

23 AUG 68

MGG

CHECK

23 AUG 68

LSD

CHECK

19 AUG 68

OMW

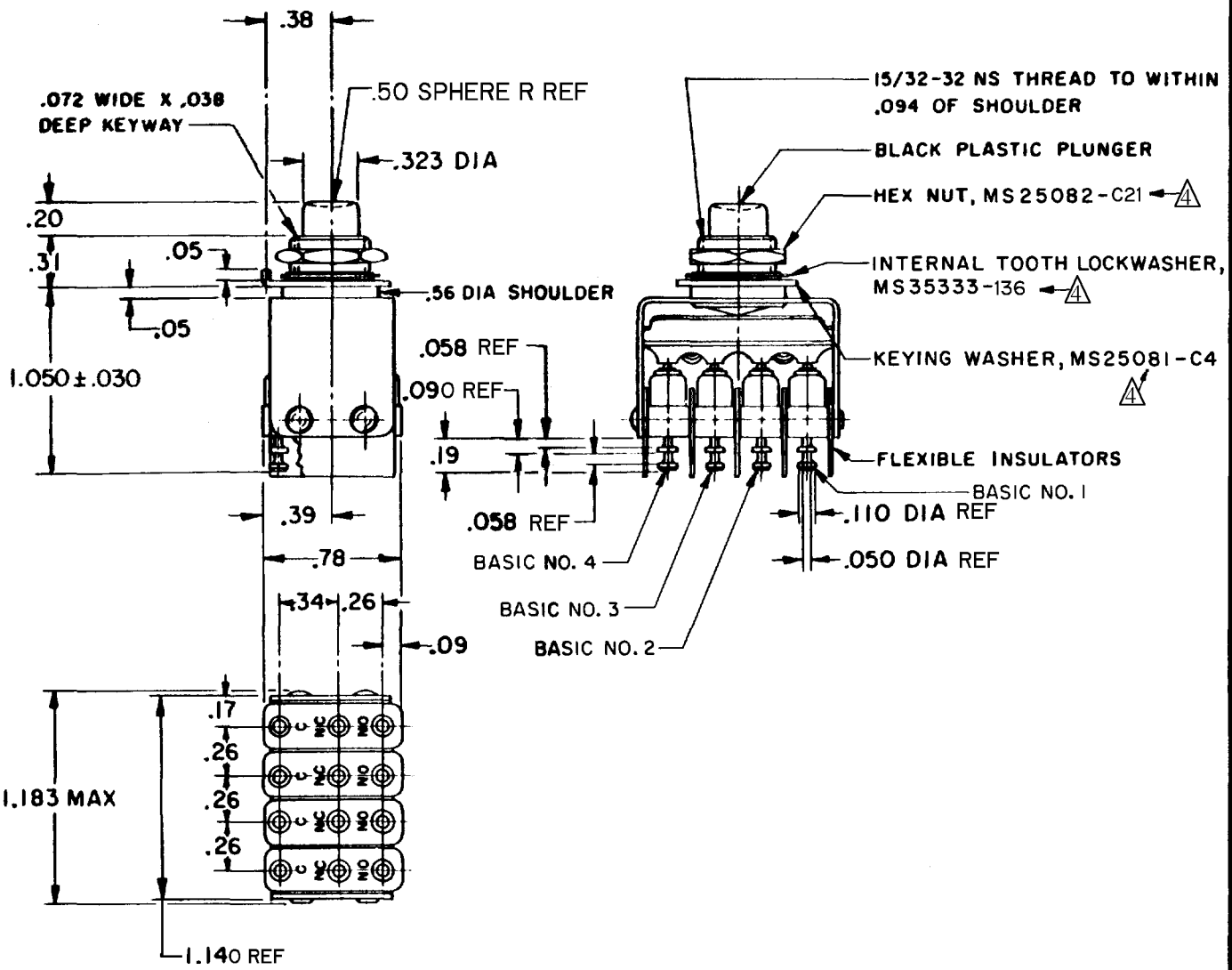
M

DRAWING NUMBER

ISSUE 9

REVISIONS

A	PR785	SRH	26 JUNE 69
B	CO26314	SRH	4 SEPT 69
C	CO27631	OMW	9 JUN 70
D	CO27719	MBS	10 AUG 70
E	CO32757	RER	28 NOV 73
F	CO-93593	CO-	93593
G	CO-94273	PPF	28 OCT 98
H	CO18511	GJW	15 APR 99
		SV	23 FEB 06



NOTES

- 1- UNIT INCLUDES MS25085-2 TYPE BASIC SWITCH (4)
  - 2- TERMINALS ARE PLATED FOR SOLDERING
  - 3- SWITCHES DO NOT NECESSARILY OPERATE SIMULTANEOUSLY
- ▲ - MOUNTING HARDWARE FURNISHED UNASSEMBLED

THIS DRAWING COVERS A PROPRIETARY ITEM AND IS THE PROPERTY OF MICRO SWITCH. A DIVISION OF HONEYWELL. THIS DRAWING IS NOT TO BE COPIED OR USED WITHOUT THE APPROVAL OF MICRO SWITCH.

CHARACTERISTICS	ELECTRICAL DATA			SCALE FULL	
OPERATING FORCE ----- 5.5 LB MAX  TOTAL TRAVEL ----- .100 APPROX	CONTACT ARRANGEMENT S P D T (4)			DO NOT SCALE PRINT	
		SEA LEVEL	50,000 FT.	UNLESS OTHERWISE NOTED DIMENSIONS ARE IN INCHES <b>TOLERANCES ARE:</b> ONE PLACE (.0) ±.030 TWO PLACE (.00) ±.015 THREE PLACE (.000) ±.005 ANGLES ±	
	LOAD	28 VDC	115 VAC		
	RESISTIVE	5	5		28 VDC
	INDUCTIVE	3	5		2.5
LAMP	2.4	1.5	2.4		
	WEIGHT .075 LB MAX				

FORMTEK  
0-30378-1A

DRAWN