

4

3

2

1


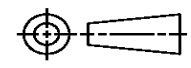
THIS DRAWING IS UNPUBLISHED. RELEASED FOR PUBLICATION
© COPYRIGHT ALL RIGHTS RESERVED.

LOC		DIST		REVISIONS			
P	LTR	DESCRIPTION		DATE	DWN	APVD	
	A2	ECR-14-003124		04MAR2014	GK	HMR	

REPLACED BY OCEAN STYLE APPLICATOR PART NUMBER 2151562-1

FOR REPLACEMENT PARTS FOR APPLICATOR 1528729
REFER TO ADDITIONAL PAGE(S). SPARE PARTS KIT (IF LISTED)
WILL REMAIN AVAILABLE.

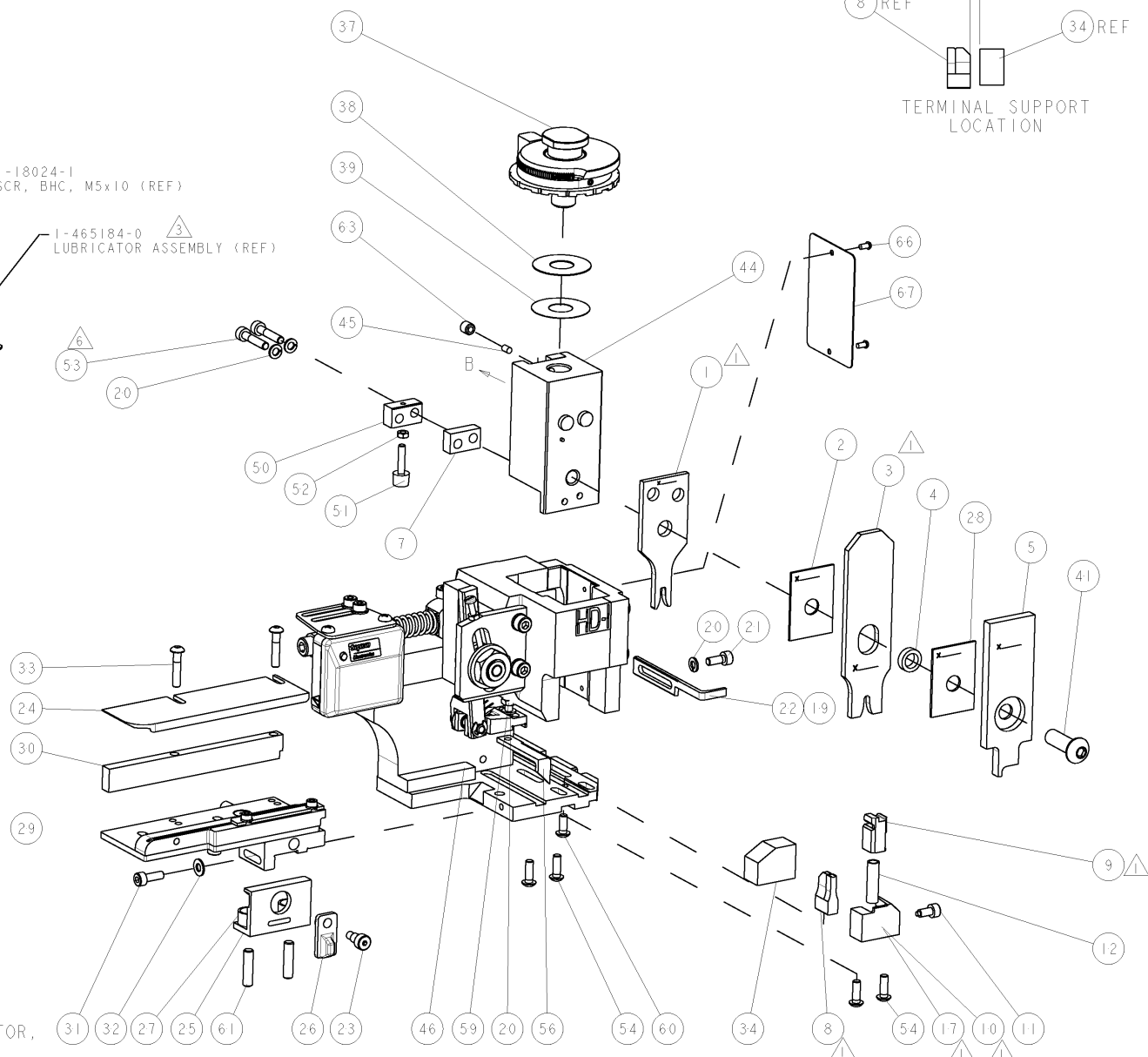
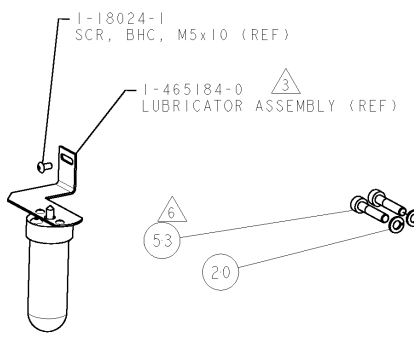
THE REPLACEMENT OCEAN STYLE APPLICATOR HAS THE
SAME TERMINATOR/PRESS INTERFACE AS APPLICATOR
1528729

THIS DRAWING IS A CONTROLLED DOCUMENT.		DWN	GOPALAKRISHNA HV		 TE Connectivity	
DIMENSIONS:		CHK	RAGHAVENDRA			
		TOLERANCES UNLESS OTHERWISE SPECIFIED:		NAME		
		0 PLC ±		FINE ADJUST SIDE FEED HDI		
		1 PLC ±		APPLICATOR		
		2 PLC ±		PRODUCT SPEC		
		3 PLC ±		APPLICATION SPEC		
		4 PLC ±		SIZE	CAGE CODE	DRAWING NO
		ANGLES ±		A3		©- 1528729
MATERIAL		FINISH		RESTRICTED TO		
				CUSTOMER DRAWING		SCALE
				SHEET 1 OF 2		REV A2

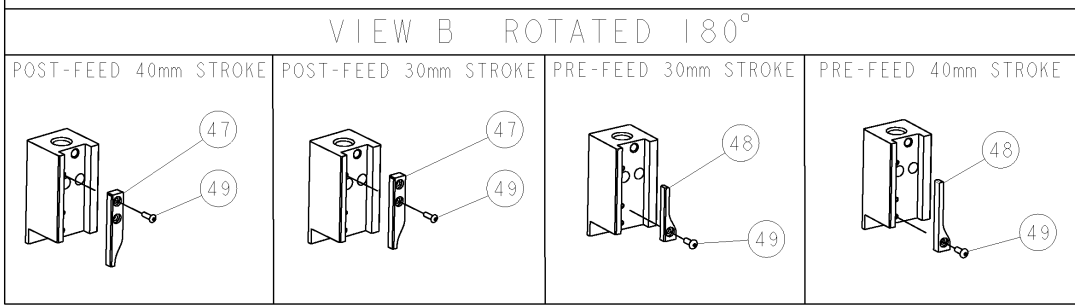
PART NUMBER	REV	TERMINATOR	FEED TYPE	DESCRIPTION
1528729-1	A	LEADMAKER	MECH POST FEED	CUTS CARRIER
1528729-2	A	BENCH	MECH PRE FEED	CUTS CARRIER
1528729-6	A	LEADMAKER	MECH POST FEED	CONTINUOUS CARRIER
7-1528729-1	A	LEADMAKER	MECH POST FEED	-1 AND SPARE PARTS
7-1528729-2	A	BENCH	MECH PRE FEED	-2 AND SPARE PARTS
7-1528729-6	A	LEADMAKER	MECH POST FEED	-6 AND SPARE PARTS
7-1528729-7	A	-	-	SPARE PARTS KIT

CRIMP DATA		TE TERMINAL	TE CRIMP SPECS
TERMINAL NAME: 4.8mm TAB WITH DOUBLE LOCKING LANCE			
CRIMP	SIZE	TYPE	RANGE
WIRE	2.79 [.110 IN]	F	>1.00-2.50mm ²
INSUL	3.56 [.140 IN]	O	2.10-2.90 [.083-.114 IN]
WIRE STRIP LENGTH 4.80-5.60 [.189-.220 IN]		APPL INSTRUCTIONS 408-8322 & 408-8490	
TERMINAL APPL SPEC 114-18022		FEED 14.50 [.571 IN]	
TERMINALS APPLIED			
962904	-	-	-
962884	-	-	-
-	-	-	-
-	-	-	-
-	-	-	-
WIRE SIZE	CRIMP HEIGHT	REF SETTING	
2.50mm ²	1.97 ± 0.05 [.078 ± .002 IN]	B 7	
2x1.00mm ² or 2.00mm ²	1.83 ± 0.05 [.072 ± .002 IN]	C 7	
1.50mm ²	1.69 ± 0.05 [.067 ± .002 IN]	D 7	

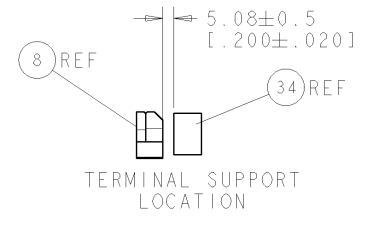
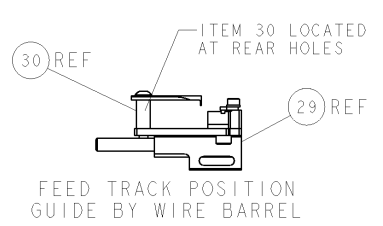
- ⚠ RECOMMENDED SPARE PARTS.
- 2. GREASE RAM, CAM, CAM FOLLOWER AND FEED ROD LIGHTLY.
- ⚠ CERTAIN TERMINALS REQUIRE LUBRICATION. REFER TO THE APPLICATOR INSTRUCTION SHEET FOR MORE INFORMATION.
- 4. LUBRICATE DAILY PER THE APPLICATOR INSTRUCTION SHEET SUPPLIED WITH THE APPLICATOR.
- ⚠ IF MORE THAN ONE TERMINAL IS APPLIED BY THIS APPLICATOR, FEED MAY REQUIRE ADJUSTMENT WHEN CHANGING FROM ONE TERMINAL TO ANOTHER.
- ⚠ CUT TO LENGTH AT ASSEMBLY.



* WARNING
 ON INSTALLATION, SET WIRE DISC TO LARGEST WIRE SIZE SETTING. USE OF SETTINGS BELOW MIN. REQUIRED CRIMP HEIGHT SETTING WILL CAUSE DAMAGE TO CRIMP TOOLING.



-77	-76	-72	-71	-6	-2	-1	PART NO	DESCRIPTION	ITEM NO
-	-	-	-	-	-	-	-	-	84
-	-	-	-	-	-	-	-	-	83
-	-	-	-	-	-	-	-	-	82
-	-	-	-	-	-	-	-	-	81
-	-	-	-	-	-	-	-	-	80
-	-	-	-	-	-	-	-	-	79
-	-	-	-	-	-	-	-	-	78
-	-	-	-	-	-	-	-	-	77
-	-	-	-	-	-	-	-	-	76
-	-	-	-	-	-	-	-	-	75
-	-	-	-	-	-	-	-	-	74



SET UP GAGE
 458637-3

REV	DATE	BY	CHKD	DESCRIPTION
A	12OCT2006	LJL	MC	SEE ECO-06-024088
A1	10JUL2008	MY	GB	ECR-08-017380

REV	DATE	BY	CHKD	DESCRIPTION	ITEM NO	
-	-	-	-	-	73	
-	-	-	-	-	72	
-	1	1	1	1	1338705-3 DOCUMENTATION PACKAGE	71
-	-	-	-	-	-	70
-	-	-	-	-	-	69
-	-	-	-	-	-	68
-	1	1	1	1	461264-5 PLATE, IDENTIFICATION	67
-	2	2	2	2	21017-2 SCREW, DRIVE	66
-	-	-	-	-	-	65
-	-	-	-	-	-	64
-	1	1	1	1	3-18031-0 SCR, SET, CUP POINT M6 X 6.0	63
-	-	-	-	-	-	62
-	2	2	2	2	2-18032-5 SCR, SET, FLT POINT M5 X 20.0	61
-	1	1	1	1	18024-7 SCR, BTN SKT HD CAP (M4 X 10.0)	60
-	1	1	1	1	5-18022-2 SCR, HEX HD CAP M4 X 8.0	59
-	-	-	-	-	-	58
-	-	-	-	-	-	57
-	1	1	1	1	1338685-1 PAWL, FEED	56
-	-	-	-	-	-	55
-	4	4	4	4	18024-8 SCR, BTN SKT HD CAP (M4 X 12.0)	54
-	2	2	2	2	1-18023-4 SCR, SKT HD CAP M4 X 20.0	53
-	1	1	1	1	18030-1 NUT, HEX, REG M3	52
-	1	1	1	1	811242-5 BUMPER, HOLD DOWN	51
-	1	1	1	1	690753-2 SPACER, TONKER	50
-	1	1	1	1	18024-3 SCR, BTN SKT HD CAP (M3 X 10.0)	49
-	-	-	-	-	-	48
-	1	1	1	1	1338675-1 CAM, UNIVERSAL PRE FEED	47
-	1	1	1	1	1338676-1 CAM, UNIVERSAL POST-FEED	46
-	1	1	1	1	1320999-3 APPLICATOR SUBASSEMBLY, HDI	45
-	1	1	1	1	690191-1 PLUG, NYLON	44
-	1	1	1	1	1333257-1 RAM	43
-	-	-	-	-	-	42
-	1	1	1	1	2-18024-6 SCR, BTN SKT HD CAP (M8 X 25.0)	41
-	-	-	-	-	-	40
-	1	1	1	1	690125-1 SHIM SUB-ASSY	39
-	1	1	1	1	469367-9 SHIM	38
-	1	1	1	1	879103-2 FINE ADJUST HEAD ASSEMBLY	37
-	-	-	-	-	-	36
-	-	-	-	-	-	35
-	1	1	1	1	1320934-6 SUPPORT, TERMINAL	34
-	2	2	2	2	1-18024-0 SCR, BTN SKT HD CAP (M4 X 20.0)	33
-	1	1	1	1	18027-2 WASHER, FLAT, REG M4	32
-	1	1	1	1	1-18023-2 SCR, SKT HD CAP M4 X 12.0	31
-	1	1	1	1	1320908-8 SPACER, STRIP GUIDE	30
-	1	1	1	1	1633073-2 STRIP GUIDE ASSEMBLY	29
-	1	1	1	1	1-455888-0 SPACER, CRIMPER	28
-	2	2	2	2	1-22284-0 SPRING, COMPRESSION	27
-	1	1	1	1	356835-1 LEVER, DRAG RELEASE	26
-	1	1	1	1	240792-1 DRAG, TERMINAL	25
-	1	1	1	1	1320928-1 PLATE, STRIP GUIDE	24
-	1	1	1	1	980371-4 SCR, SKT HD SHLDR 5.0 DIA X 6.0	23
-	1	1	1	1	690472-2 STRIPPER	22
-	1	1	1	1	1-18023-1 SCR, SKT HD CAP M4 X 10.0	21
-	4	4	4	4	18025-2 WASHER, SPRG LOCK, REG M4	20
-	1	1	1	1	690472-1 STRIPPER	19
-	-	-	-	-	-	18
-	1	1	1	1	1338684-1 SHEAR HOLDER, FRONT	17
-	-	-	-	-	-	16
-	-	-	-	-	-	15
-	-	-	-	-	-	14
-	-	-	-	-	-	13
-	1	1	1	1	3-22280-3 SPRING, COMPRESSION	12
-	1	1	1	1	356885-4 STOP, SHEAR	11
-	1	1	1	1	1320921-1 SHEAR HOLDER, FRONT, CUT	10
-	1	1	1	1	454276-1 FLOATING SHEAR, FRONT	9
-	1	2	2	2	1333207-7 ANVIL, COMBINATION	8
-	1	1	1	1	2-240641-5 SPACER	7
-	-	-	-	-	-	6
-	1	1	1	1	2-455889-0 DEPRESSOR, SHEAR	5
-	1	1	1	1	3-238011-1 BLOCK, CRIMPER SPACER	4
-	1	2	2	2	4-683454-8 CRIMPER, INSULATION 0	3
-	1	1	1	1	455888-9 SPACER, CRIMPER	2
-	1	2	2	2	2-456408-0 CRIMPER, WIRE PREMIUM	1

DIMENSIONS: mm [IN] TOLERANCES UNLESS OTHERWISE SPECIFIED: 0 PLC ± 1 PLC ± 2 PLC ± 3 PLC ± 4 PLC ± ANGLES ±		DWG: 14SEP2006 CHN: L LOFTHOUSE APVD: M CLIFFORD PRODUCT SPEC: 14SEP2006 APPLICATION SPEC: See Table WEIGHT: - FINISH: -		Tyco Electronics Harrisburg, PA 17105-3608 NAME: FINE ADJUST SIDE FEED HDI APPLICATOR SIZE: A1 CASE CODE: 00779 DRAWING NO: 1528729 RESTRICTED TO: - SCALE: 3:5 SHEET: 1 OF 1 REV: A1	
--	--	--	--	--	--