

Daten & Signal, Inline Socket, 6.3 mm, 2-pole, solder terminal, shielded



Description

- Solder terminal:
- Data and Signal transfer
- Data and Signal Connectors 2-pole, shielded, straight

References

Alternative: Housing insulated

Weblinks

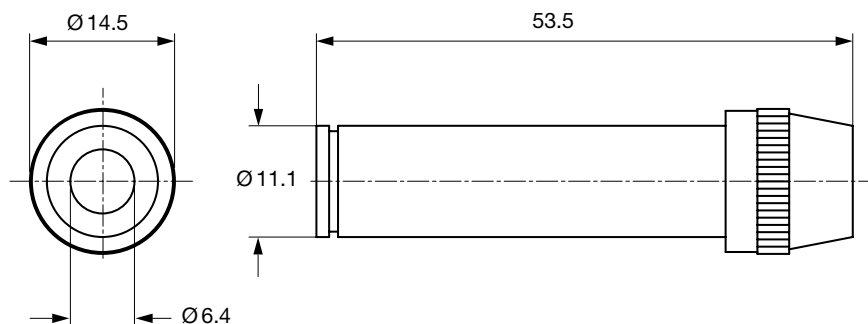
[pdf-datasheet](#), [html-datasheet](#), [General Product Information](#), [RoHS](#), [CHINA-RoHS](#), [REACH](#), [Mating Connectors](#), [e-Shop](#), [SCHURTER-Stock-Check](#), [Distributor-Stock-Check](#)

Technical Data

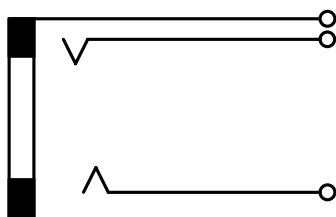
| | |
|-----------------------|-----------------------------|
| Diameter | 6.3 mm |
| Number of Poles | 2-pole |
| Ratings DC | 2 A / 12 VDC |
| Ratings AC | 2 A / 12 VAC |
| Dielectric Strength | 1000VDC |
| Insulation Resistance | > 10000 M Ω @ 500VDC |

| | |
|---------------------------|------------------|
| Allowable Operation Temp. | -20 °C to 70 °C |
| Terminal | solder terminal |
| Housing | screened |
| Style | straight |
| Lifetime | 10000 Insertions |

Dimensions



Diagrams



All Variants

| Product group | Diameter [mm] | Number of Poles | Terminal | Order Number |
|----------------------------------|---------------|-----------------|-----------------|--------------|
| Data and Signal Plug/ Sockets | 6.3 | 2-pole | solder terminal | 4803.3200 |

Availability for all products can be searched real-time: <http://www.schurter.com/en/Stock-Check/Stock-Check-SCHURTER>

Packaging unit 100 Pcs

Mating Inlets/Plugs

Category / Description

Data and Signal Plug/Socket Overview complete



| | |
|---|-----------|
| Data & Signal, Plug, 6.3 mm, 2-pole, solder terminal, shielded | 4803.1200 |
| Data & Signal, Plug, 6.3 mm, 2-pole, solder terminal, insulated | 4803.1210 |
| Data & Signal, Plug, 6.3 mm, 2-pole, solder terminal, insulated, angled | 4803.1220 |

Data and Signal Plug/Socket further types to 4803 UK-Stecker, D=6,5mm