

THIS DRAWING IS UNPUBLISHED.

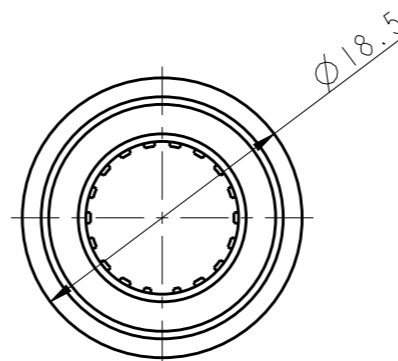
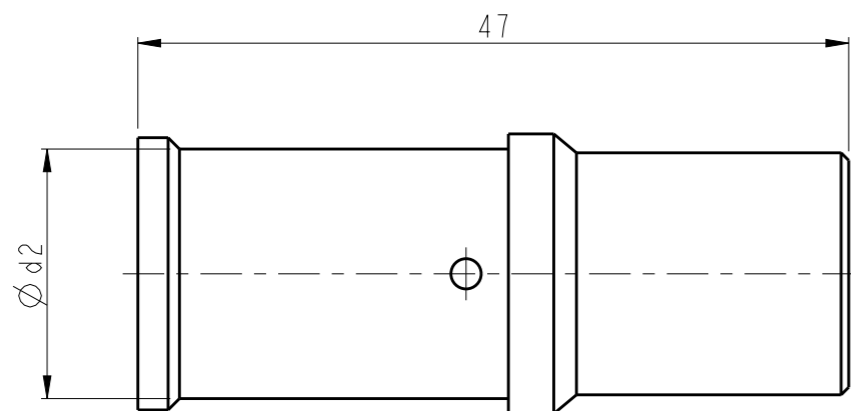
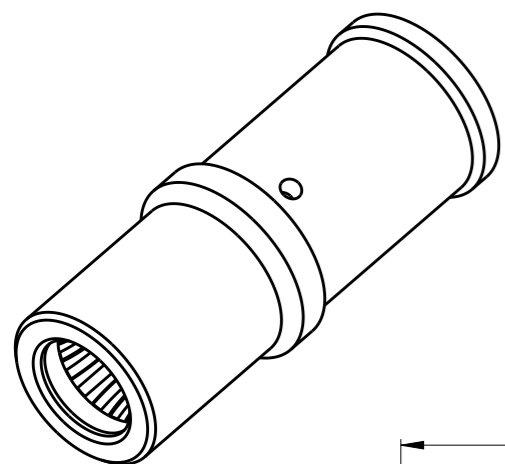
RELEASED FOR PUBLICATION

20

© COPYRIGHT 20 BY - ALL RIGHTS RESERVED.

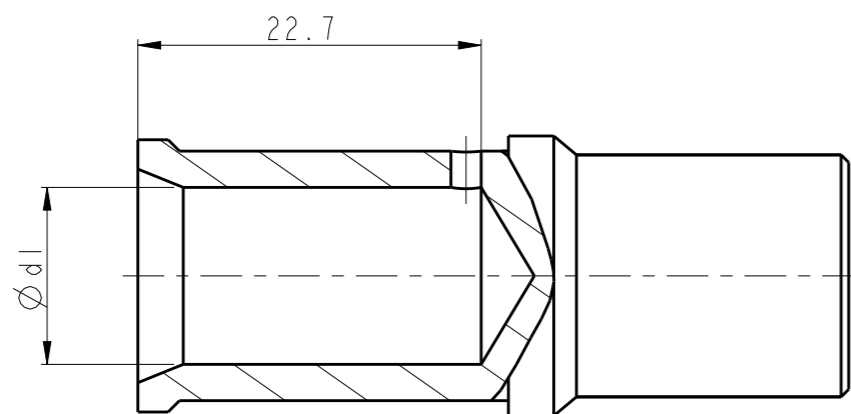
REVISIONS

P	LTR	DESCRIPTION	DATE	DWN	APVD
	A	INITIAL	03MAR2016	BS	CW



NOTES:  
 1. TECHNICAL CHARACTERISTICS:  
 CONTACT MATERIAL: COPPER  
 SURFACE PLATING: SILVER PLATING  
 WIRE RANGE: 35-70 mm<sup>2</sup> (2-2/0 AWG)

注释:  
 1. 技术参数:  
 针件材料: 铜合金  
 表面电镀: 镀银  
 接线范围: 35-70 mm<sup>2</sup> (2-2/0 AWG)



SOCKET CONTACT 母针	PART NUMBER AFTER PLATING 电镀后料号		$\phi d1$	$\phi d2$	SURF AREA (mm <sup>2</sup> ) 表面积	WIRE GAUGE		STRIPPING LENGTH 剥线长度 (mm)
	PART NUMBER 料号	DESCRIPTION 型号				mm <sup>2</sup>	AWG	
	T2192502035-000	HCM250-FC-35	8.4	12.5	3285.71	35	2	22
	T2192502050-000	HCM250-FC-50	10.2	14.5	3480.79	50	1/0	22
	T2192502070-000	HCM250-FC-70	11.7	16.5	3653.68	70	2/0	22

THIS DRAWING IS A CONTROLLED DOCUMENT.

DIMENSIONS: mm	TOLERANCES UNLESS OTHERWISE SPECIFIED: 0 PLC ±- 1 PLC ±- 2 PLC ±- 3 PLC ±- 4 PLC ±- ANGLES ±-	DWN BELL SU 03MAR2016 CHK KYLE ZENG 03MAR2016 APVD CHRIS WANG 03MAR2016				
MATERIAL -	FINISH -	PRODUCT SPEC 108-137171 APPLICATION SPEC 114-137171 WEIGHT -			NAME HCM250 SOCKET CONTACT	
		CUSTOMER DRAWING	SIZE A3	CAGE CODE -	DRAWING NO. ©-T21925020XX000	RESTRICTED TO -
			SCALE 2:1	SHEET 1 OF 1	REV A	