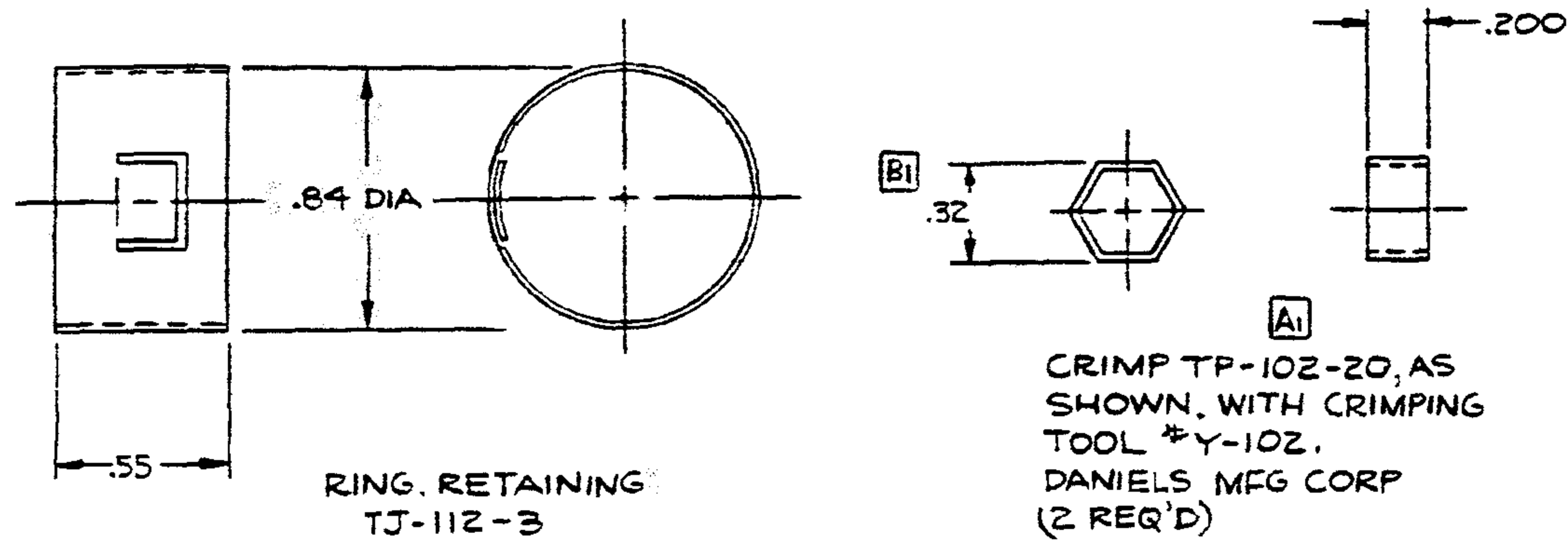
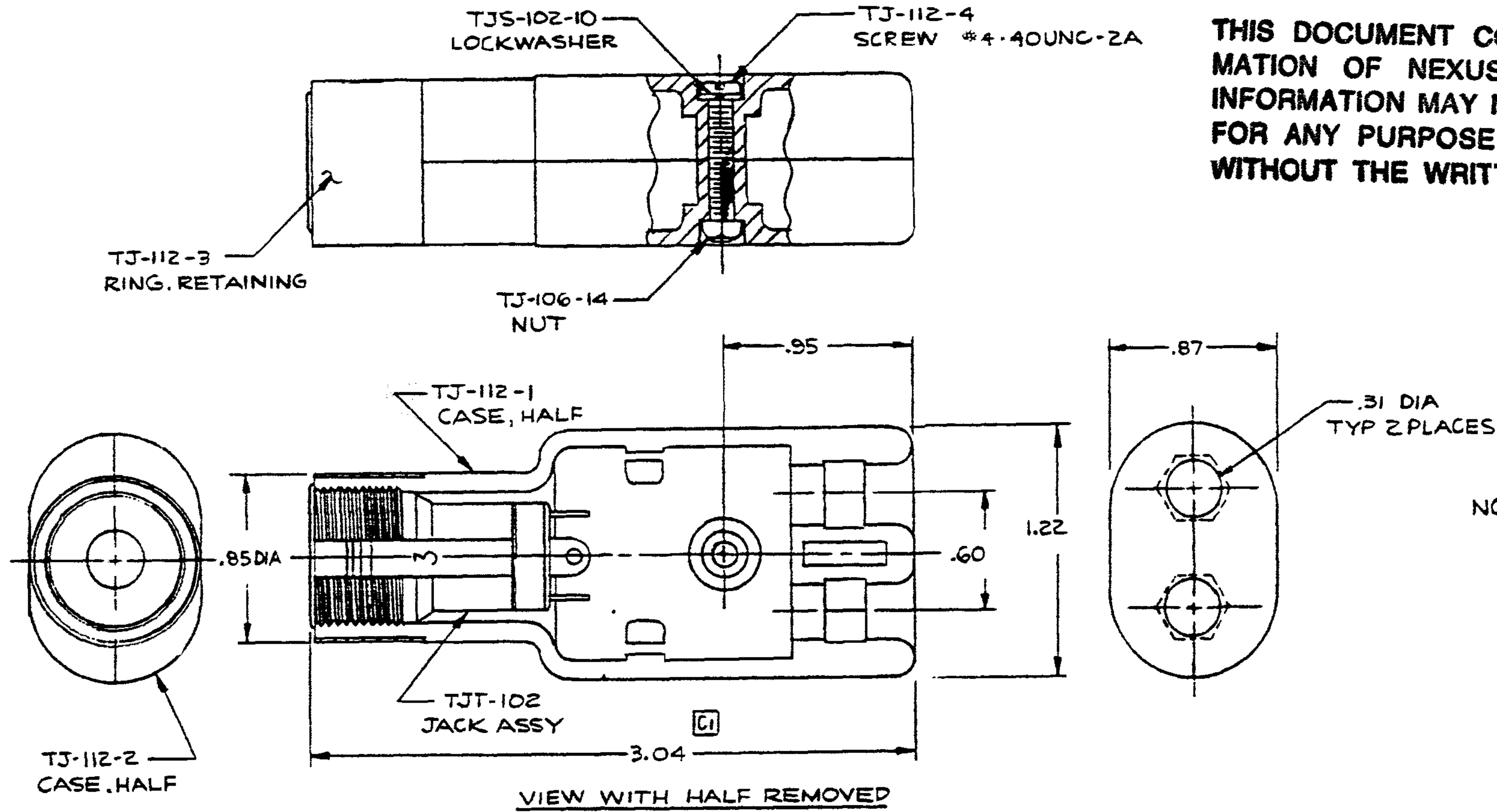


THIS DOCUMENT CONTAINS PROPRIETARY INFORMATION OF NEXUS, INCORPORATED AND SUCH INFORMATION MAY NOT BE DISCLOSED TO OTHERS FOR ANY PURPOSE OR USED FOR ANY PURPOSE WITHOUT THE WRITTEN CONSENT OF NEXUS.



C/TJ-112

DES. BY	IDH	DATE	12-5-85	MATERIAL	
00B2	C	2) ALL DIMS MADE 2 PLCS 1) 3.04 WAS 3.00 & EXTENSION LINE MOVED	12/17/85	FINISH	
	B	1) CRIMP WAS OCTAGON & .320 WAS .500 DIM	5/24/85	WEIGHT	SCALE 2:1
	A	1) TP-102-20 WAS TJ-102-20	5-25-85	TITLE	JACK, TELEPHONE
CN ⁷	LET	REVISED	DATE	ENG.	DO NOT SCALE DWG.
				SHEET OF	
				NEXUS STAMFORD, CONN.	
				C TJ-112	