

4

3

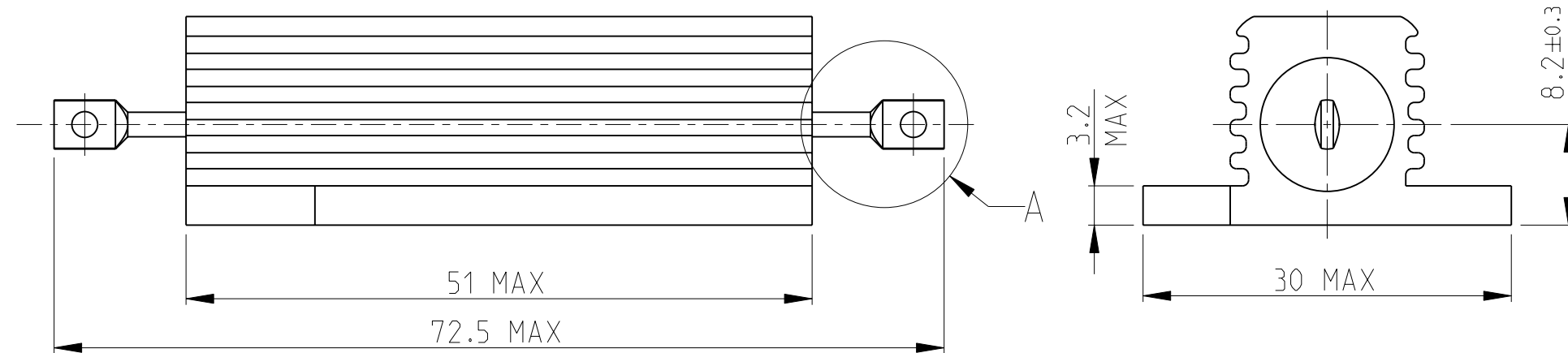
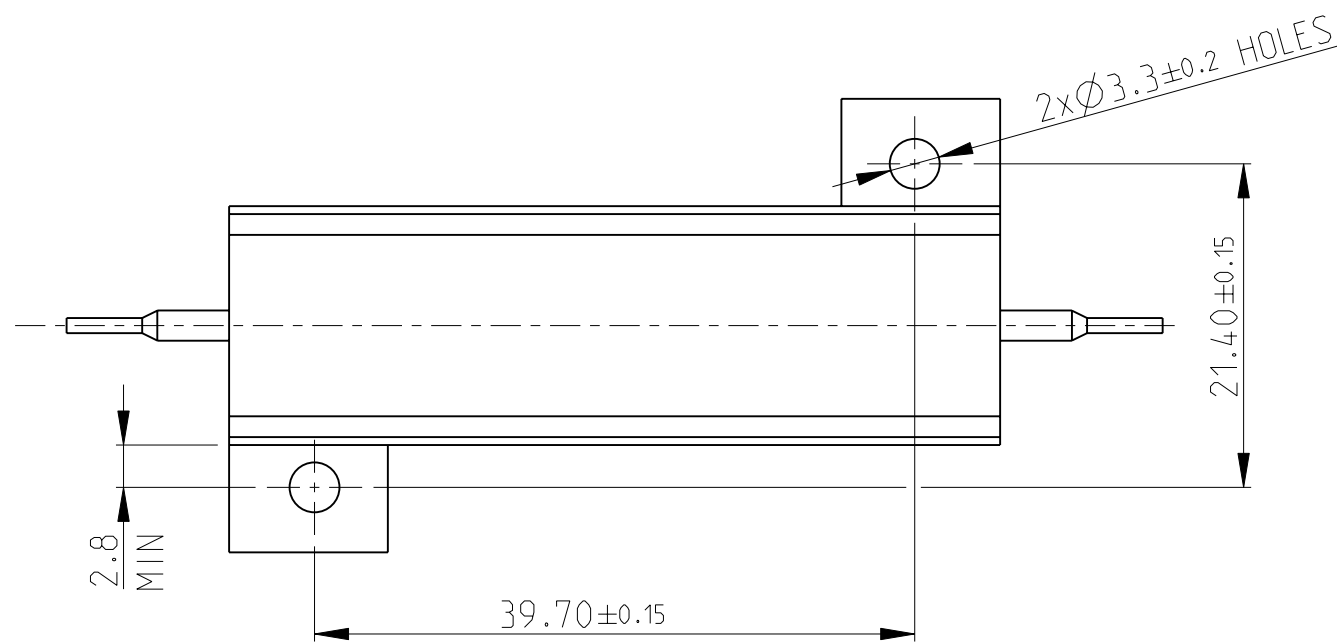
2

1

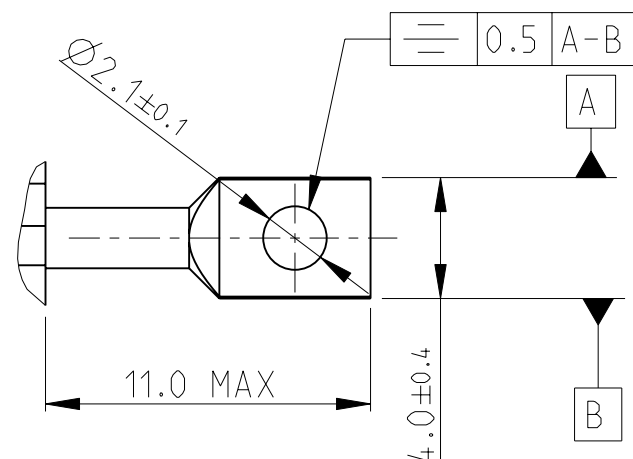
LOC	DIST	REVISIONS					
		P	LTR	DESCRIPTION	DATE	DWN	APVD
E	B		B2	REVISED PER ECO-11-005150	29MAR2011	RK	HMR

- 1 FOR FURTHER INFORMATION SEE DATA SHEET FOR HS SERIES-ALUMINIUM HOUSED RESISTORS
- 2 FOR A SPECIFIC PN FOR A RESISTANCE VALUE AND TOLERANCE, PLEASE REFER TO DMF
- 3 TECHNICAL SPECIFICATION

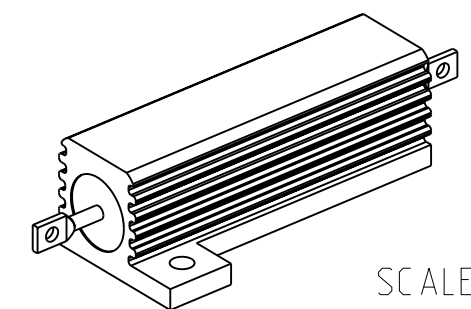
DISSIPATION AT 25°C : 50 WATTS MOUNTED ON STANDARD HEATSINK
BS OHMIC RANGE : R051 TO 72K
STABILITY : $\Delta R < = 1\%$ PER 1000Hrs
ISOLATION VOLTAGE : 2500V DC/AC pk
MAX WORKING VOLTAGE : 1250V DC/AC rms
TEMP COEFFICIENT : > 1R0 50ppm
> 100R 25ppm
CLIMATIC CATEGORY : 55/200/56



DETAIL A
SCALE 4:1



RoHS Compliant



THIS DRAWING IS A CONTROLLED DOCUMENT.		DWN	22.SEP.05	<div><div><div>TE</div></div><div>TE Connectivity</div></div>		
		CHK	23.SEP.05			
		J CATCHPOLE	23.SEP.05	NAME HSA50 WIDE BORE		
		APVD	23.SEP.05			
		J CATCHPOLE		SIZE A3		
		PRODUCT SPEC				
				CAGE CODE 00779		
		APPLICATION SPEC				
				DRAWING NO C-1625984		
		WEIGHT	-	RESTRICTED TO -		
		CUSTOMER DRAWING		SCALE 3:1		
				SHEET 1 OF 1		
				REV B2		