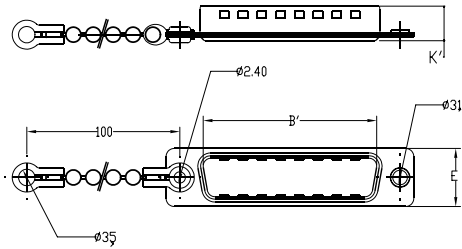


This document is the property of Amphenol Corporation and is delivered on the express condition that it is not to be disclosed, reproduced or used, in whole or in part, for manufacture or sale by anyone other than Amphenol Corporation without its prior consent, & that no right is granted to disclose or to use any information in this document.

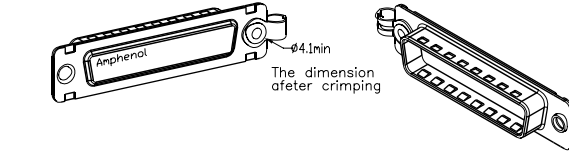
REVISIONS				
SYM	ECN	DESCRIPTION	DATE	APPROVED
1			03/27/09	



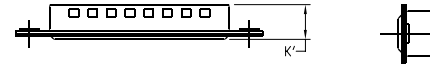
Flat MALE dust cover with Chain, for use with FEMALE connector

Part number

- 09 contacts or shell size E =L17D4K630 09
- 15 contacts or shell size A =L17D4K630 15
- 25 contacts or shell size B =L17D4K630 25
- 37 contacts or shell size C =L17D4K630 37
- 50 contacts or shell size D =L17D4K630 50



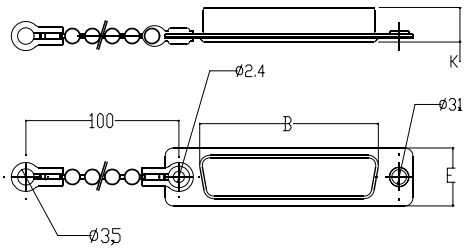
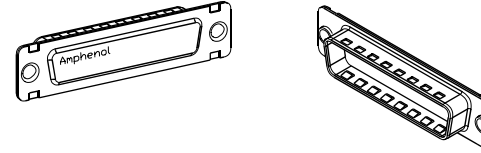
The dimension after crimping



Flat MALE dust cover without Chain, for use with FEMALE connector

Part number

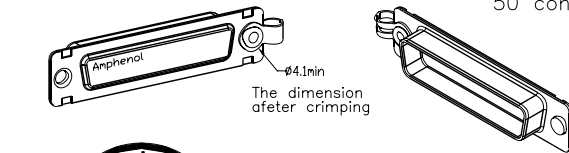
- 09 contacts or shell size E =L17D4K630 10
- 15 contacts or shell size A =L17D4K630 16
- 25 contacts or shell size B =L17D4K630 26
- 37 contacts or shell size C =L17D4K630 38
- 50 contacts or shell size D =L17D4K630 51



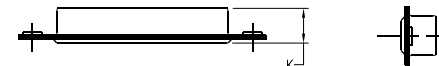
Flat FEMALE dust cover with Chain, for use with MALE connector

Part number

- 09 contacts or shell size E =L17D4K631 09
- 15 contacts or shell size A =L17D4K631 15
- 25 contacts or shell size B =L17D4K631 25
- 37 contacts or shell size C =L17D4K631 37
- 50 contacts or shell size D =L17D4K631 50



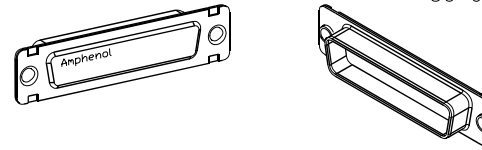
The dimension after crimping



Flat FEMALE dust cover without Chain, for use with MALE connector

Part number

- 09 contacts or shell size E =L17D4K631 10
- 15 contacts or shell size A =L17D4K631 16
- 25 contacts or shell size B =L17D4K631 26
- 37 contacts or shell size C =L17D4K631 38
- 50 contacts or shell size D =L17D4K631 51



Shell = steel with tin plating

Customer drawing

Size	B'	B	K'	K	E
E	16,8	16,4	7,6	7,9	12,4
A	25,1	24,8	7,6	7,9	12,4
B	38,8	38,5	7,6	7,9	12,4
C	55,3	54,9	7,6	7,9	12,4
D	52,7	52,5	7,6	7,9	15,2

UNLESS OTHERWISE SPECIFIED TOLERANCES		APPROVAL		DATE
U.S.	METRIC	DRAWN	Lik Wang	02/04/07
.X	+/-	CHECKED	Stefan	02/04/07
.XX	+/-	CHECKED		
.XXX	+/-			
FRACTIONS	+/-			
ANGLES	+/-			
FOR MATERIALS AND FINISHES SEE NOTES		DRAWING FILE :		
REMOVE SHARP EDGES		ANGLE OF PROJECTION		
DIMENSIONS				
U.S.	INCHES			
METRIC	MM			

Amphenol
Accessory, Dust Cover

SIZE	DRAWING NO.	REV.
A4	C L17D4K63XXX	1
SCALE	NONE	SHEET 1 OF 1