

Printed Circuit Mount

14A Series

One-4-All™ International Transformers

International Standards at Lower Cost with Better Performance

Signal's 14A transformers are used in low power applications and provide the high isolation, creepage and clearance necessary to comply with international safety standards.

General Specifications

- Power - 2.5 VA to 56 VA
- Dielectric Strength - 4000 Vrms Hipot
- Dual Primaries - 115/230 V - 50/60 Hz
- Dual Secondaries - Series or parallel
- Insulation System - Class F, 155° C, UL 1446 (E66312)
- Flammability Rating - Bobbin and shroud material meet UL 94-V0

Agency Certifications

- UL recognized to UL 506 / UL 5085-2, File # E63829
- CSA certified to C22.2 No. 66.1, File # 221070
- VDE certified to VDE 0805 / EN 60950, File # 1446

CSA certified to C22.2 No. 66.3 / UL5085-3,
File # 221070 - Class 2 Energy Limited

UL Recognized to UL5085-3 Inherently Limited

* UL Recognized to UL5085-3 Non-Inherently Limited



Part Number Selection

Part Number	VA	Secondary RMS Rating	
	Size	Series	Parallel
14A-2.5R-10	2.5	10.0 VCT @ 0.25 A	5.0 V @ 0.50 A
14A-5.0R-10	5	10.0 VCT @ 0.50 A	5.0 V @ 1.00 A
14A-10R-10	10	10.0 VCT @ 1.00 A	5.0 V @ 2.00 A
14A-2.5R-12##	2.5	12.6VCT @ 0.20 A	6.3 V @ 0.40 A
14A-5.0R-12##	5	12.6 VCT @ 0.40 A	6.3 V @ 0.80 A
14A-10R-12##	10	12.6 VCT @ 0.80 A	6.3 V @ 1.60 A
14A-2.5R-16#	2.5	16.0 VCT @ 0.15 A	8.0 V @ 0.30 A
14A-5.0R-16#	5	16.0 VCT @ 0.31 A	8.0 V @ 0.62 A
14A-10R-16#	10	16.0 VCT @ 0.62 A	8.0 V @ 1.25 A
14A-2.5R-20##	2.5	20.0 VCT @ 0.12 A	10 V @ 0.24 A
14A-5.0R-20#	5	20.0 VCT @ 0.25 A	10 V @ 0.50 A
14A-10R-20#	10	20.0 VCT @ 0.50 A	10 V @ 1.00 A
14A-2.5R-24##	2.5	24.0 VCT @ 0.10 A	12 V @ 0.20 A
14A-5.0R-24##	5	24.0 VCT @ 0.21 A	12 V @ 0.42 A
14A-10R-24##	10	24.0 VCT @ 0.42 A	12 V @ 0.84 A
14A-2.5R-28	2.5	28.0 VCT @ 0.09 A	14 V @ 0.18 A
14A-5.0R-28	5	28.0 VCT @ 0.18 A	14 V @ 0.36 A
14A-10R-28	10	28.0 VCT @ 0.36 A	14 V @ 0.72 A
14A-2.5R-36	2.5	36.0 VCT @ 0.07 A	18 V @ 0.14 A
14A-5.0R-36	5	36.0 VCT @ 0.14 A	18 V @ 0.28 A
14A-10R-36	10	36.0 VCT @ 0.28 A	18 V @ 0.56 A

Part Number	VA	Secondary RMS Rating	
	Size	Series	Parallel
14A-20-10	20	10.0 VCT @ 2.0 A	5.0 V @ 4.0 A
14A-30-10	30	10.0 VCT @ 3.0 A	5.0 V @ 6.0 A
14A-56-10	56	10.0 VCT @ 5.6 A	5.0 V @ 11.2 A
14A-20-12##	20	12.6 VCT @ 1.6 A	6.3 V @ 3.2 A
14A-30-12##	30	12.6 VCT @ 2.4 A (2)	6.3 V @ 4.80 A (4)
14A-56-12*	56	12.6 VCT @ 4.4 A (4)	6.3 V @ 8.80 A ++
14A-20-16#	20	16.0 VCT @ 1.25 A	8.0 V @ 2.50 A
14A-30-16#	30	16.0 VCT @ 1.90 A	8.0 V @ 3.80 A
14A-56-16	56	16.0 VCT @ 3.50 A	8.0 V @ 7.00 A
14A-20-20#	20	20.0 VCT @ 1.00 A	10 V @ 2.00 A
14A-30-20#	30	20.0 VCT @ 1.50 A	10 V @ 3.00 A
14A-56-20	56	20.0 VCT @ 2.80 A	10 V @ 5.60 A
14A-20-24##	20	24.0 VCT @ 0.83 A	12 V @ 1.66 A
14A-30-24##	30	24.0 VCT @ 1.25 A (1)	12 V @ 2.50 A (3)
14A-56-24*	56	24.0 VCT @ 2.33 A (2)	12 V @ 4.66 A (4)
14A-20-28	20	28.0 VCT @ 0.72 A	14 V @ 1.44 A
14A-30-28	30	28.0 VCT @ 1.06 A	14 V @ 2.12 A
14A-56-28	56	28.0 VCT @ 2.00 A	14 V @ 4.00 A
14A-20-36	20	36.0 VCT @ 0.56 A	18 V @ 1.12 A
14A-30-36	30	36.0 VCT @ 0.82 A	18 V @ 1.64 A
14A-56-36	56	36.0 VCT @ 1.56 A	18 V @ 3.12 A

Recommended secondary fuse value specified as below:

(1)	(2)	(3)	(4)
1.5	2.5	3.0	5.0

++ Parallel connected secondaries NOT Class 2 rated.



Custom versions available upon request.



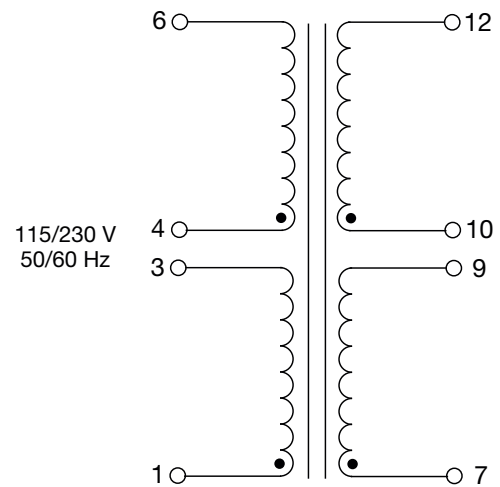
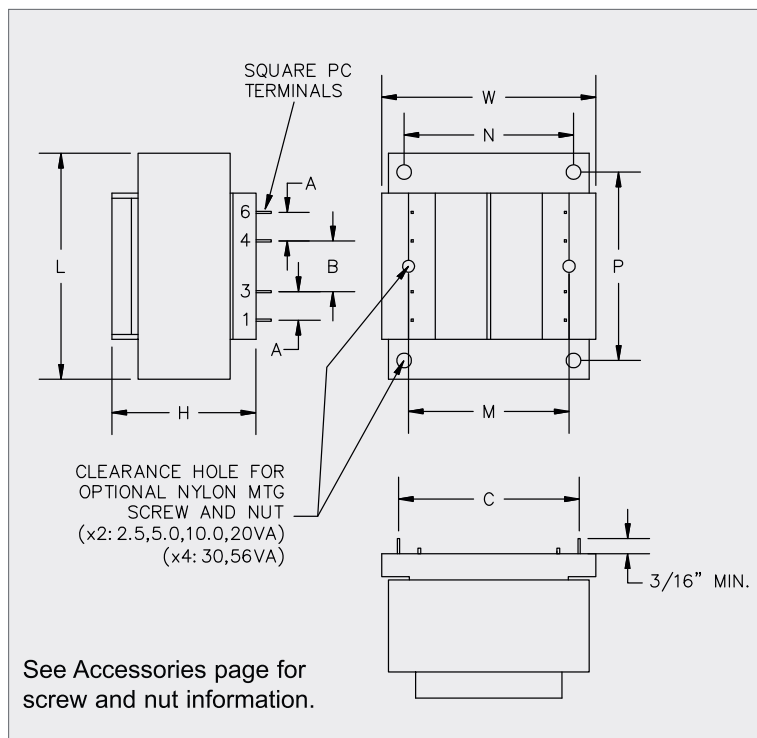
128 Atlantic Avenue, Lynbrook, NY 11563
 Toll Free 866-239-5777 | Tel 516-239-5777 | Fax 516-239-7208
 sales@signaltransformer.com | techhelp@signaltransformer.com

belfuse.com/signal

Mechanical Specifications

VA	Mechanical Dimensions						Sq. Pin Dimensions	Mounting Dimensions			Mounting Screw		Weight	
	L	W	H*	A	B	C		M	N	P	Size	Qty		
Size	Inches (mm)											Size	Qty	lbs (kg)
2.5	1.62 (41.3)	1.43 (36.5)	1.12 (28.6)	0.20 (5.08)	0.25 (6.35)	1.00 (25.4)	0.025 (0.64)	1.06 (26.9)	-	-	#4	2	0.25 (0.113)	
5	1.62 (41.3)	1.43 (36.5)	1.37 (34.9)	0.20 (5.08)	0.40 (10.16)	1.00 (25.4)	0.025 (0.64)	1.06 (26.9)	-	-	#4	2	0.37 (0.168)	
10	1.87 (47.6)	1.56 (39.7)	1.37 (34.9)	0.20 (5.08)	0.40 (10.16)	1.14 (29.0)	0.036 (0.91)	1.25 (31.7)	-	-	#4	2	0.53 (0.240)	
20	2.25 (57.2)	1.87 (47.6)	1.62 (41.3)	0.40 (10.2)	0.40 (10.2)	1.46 (37.1)	0.036 (0.91)	1.50 (38.1)	-	-	#4	2	0.90 (0.41)	
30	2.62 (66.7)	2.18 (55.5)	1.56 (39.7)	0.55 (13.9)	0.27 (7.0)	1.68 (42.7)	0.045 (1.14)	-	1.75 (44.4)	2.18 (55.5)	#6	4	1.15 (0.52)	
56	3.00 (76.2)	2.50 (63.5)	1.83 (46.5)	0.60 (15.2)	0.30 (7.6)	1.90 (48.3)	0.045 (1.14)	-	2.00 (50.8)	2.50 (63.5)	#6	4	1.70 (0.77)	

*Note: Dimension H represents the total distance from the seating plane to the uppermost surface, stand offs and/or risers inclusive.



Custom versions available upon request.



128 Atlantic Avenue, Lynbrook, NY 11563
Toll Free 866-239-5777 | Tel 516-239-5777 | Fax 516-239-7208
sales@signaltransformer.com | techhelp@signaltransformer.com

belfuse.com/signal