

## M12 Field Attachable Connectors (Stainless Steel Hardware)

### RSCWN | RKCWN

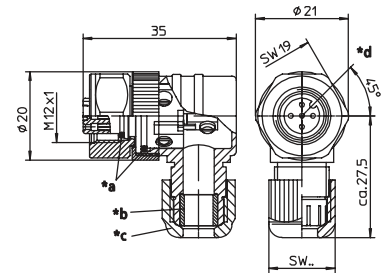


#### Male, 4- and 5-Pole (90°)

Field attachable connector, M12 male right angle connector, 4- and 5-pole with stainless steel hexagon threaded joint, assembling with screw terminals.

– especially designed for use in food processing equipment –

#### RSCWN



- \*a O-Ring
- \*b gasket
- \*c cap nut
- \*d insert 90° rotatable

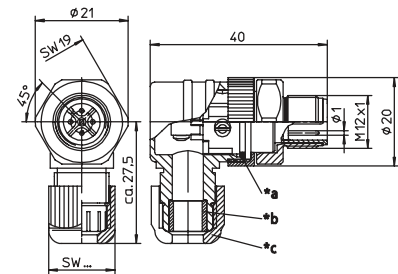


#### Female, 4- and 5-Pole

Field attachable connector, M12 female right angle connector, 4- and 5-pole with stainless steel hexagon threaded joint, assembling with screw terminals.

– especially designed for use in food processing equipment –

#### RKCWN

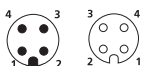


- \*a O-Ring
- \*b gasket
- \*c cap nut

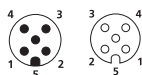
### Pin Assignments

#### Face Views / M12, Male / Female

##### 4 pole



##### 5 pole





Be Certain with Belden

## M12 Field Attachable Connectors (Stainless Steel Hardware)

RSCWN | RKCWN

### Technical Data

#### Environmental

Degree of protection IP 67 / NEMA 6P  
Operating temperature range -25°C (-13°F) / +85°C (+185°F)

#### Mechanical

Housing / Molded body PBT  
Insert PBT  
Contact CuZn, pre-coppered, CuSnZn  
8-poles pre-nickel, gold-plated  
Receptacle shell stainless steel  
O-ring FKM  
Mode of connection Screw terminals  
Connectable conductor 4-5 poles max. 0.75 mm<sup>2</sup>  
8 poles max. 0.50 mm<sup>2</sup>

#### Electrical

Contact resistance ≤ 5 mΩ  
Nominal current at 40°C 4-5 poles 4 A  
8 poles 2 A  
Nominal voltage 4 poles 240 V  
5 poles 60 V  
8 poles 30 V  
Rated voltage 4 poles 250 V  
5 poles 63 V  
8 poles 36 V  
Test voltage 4 poles 2.0 kV eff. / 60 s  
5 poles 1.5 kV eff. / 60 s  
8 poles 0.9 kV eff. / 60 s  
Insulation resistance > 109 Ω  
Pollution degree 3

Part Number	Pins	Cable Diameter Range	Characteristics
<b>Male</b>	<b>Female</b>		
RSCWN 4/7	RKCWN 4/7	4	Ø 3.0-6.5 mm /SW 15
RSCWN 4/9	RKCWN 4/9		Ø 4.0-8.0 mm /SW 19
RSCWN 5/7	RKCWN 5/7	5	Ø 3.0-6.5 mm /SW 15
RSCWN 5/9	RKCWN 5/9		Ø 4.0-8.0 mm /SW 19

