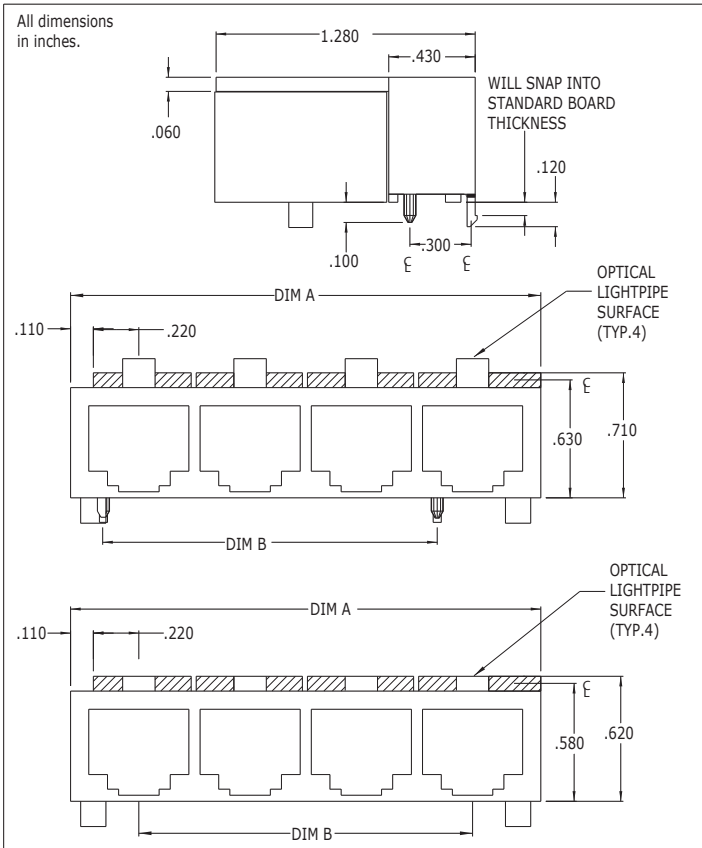


7101P/R Series Bright★Pipes™ Optical Lightpipes FOR RJ-STYLE JACKS

Description and Features



- Precision engineered with **ray tracing** for bright, optically precise even indication and attractive appearance.
- ESD protection from circuitry for exceptional reliability.
- High contrast and wide viewing angle for greater visibility.
- Parts inserted after reflow to permit LED pad inspection before assembly.
- Optimized for use with Bright★Chips™ CMD67-21 Series.
- 7101P features large square lens (.16" x .16") for high visibility.
- 7101R features low profile (.16" x .07"h) rectangular lens ideal for height-constrained applications.
- One lightpipe per port.

| Model | Mounting | Ports | DIM A | DIM B |
|---------------|----------|-------|-------|-------|
| 7101P1/7101R1 | M or T | 1 | .550 | - |
| 7101P2/7101R2 | M or T | 2 | 1.10 | .550 |
| 7101P3/7101R3 | M or T | 3 | 1.65 | 1.10 |
| 7101P4/7101R4 | M or T | 4 | 2.20 | 1.65 |
| 7101P5/7101R5 | M or T | 5 | 2.75 | 2.20 |
| 7101P6/7101R6 | M or T | 6 | 3.30 | 2.75 |
| 7101P7/7101R7 | M or T | 7 | 3.85 | 3.30 |
| 7101P8/7101R8 | M or T | 8 | 4.40 | 3.85 |

*M=locking press-in pin for .062" boards;
T=double sided adhesive (supplied separately)
Example: To order Series 7101P Bright Pipes with 6 ports and press-in mounting, you would order 7101P6-M.

Refer to "Mounting Hole Pattern 3.pdf"

| Ports | Dim A | Dim B | Dim C | Dim D | Dim E | Dim F | Dim G |
|-------|-------|-------|-------|-------|-------|-------|-------|
| 1 | .550 | N/A | N/A | .175 | N/A | N/A | N/A |
| 2 | 1.10 | 1.00 | .550 | .175 | .550 | N/A | N/A |
| 3 | 1.65 | 1.55 | 1.10 | .175 | 1.10 | N/A | N/A |
| 4 | 2.20 | 2.10 | 1.65 | .175 | 1.65 | N/A | N/A |
| 5 | 2.75 | 2.65 | 2.20 | .175 | 1.65 | N/A | N/A |
| 6 | 3.30 | 3.20 | 2.75 | N/A | N/A | .925 | 1.65 |
| 7 | 3.85 | 3.75 | 3.30 | N/A | N/A | .925 | 1.65 |
| 8 | 4.40 | 4.30 | 3.85 | N/A | N/A | .925 | 1.65 |