

C. Westoby 12-3-90

DESCRIPTION APP'D./DATE REV

SAFETY ORGANIZATION(S):

THIS FILTER HAS BEEN FORMALLY RECOGNIZED, CERTIFIED OR APPROVED BY THE LISTED AGENCY. THEREFORE, ALL TEST/REQUIREMENTS SPECIFIED IN THE LATEST REVISION OF THE FOLLOWING AGENCY STANDARDS HAVE BEEN MET:

UL RECOGNIZED  
 CSA CERTIFIED  
 VDE APPROVED

UL 1283  
 CSA 22.2, NO.0,0.4,8  
 VDE 565-3

OPERATING SPECIFICATIONS:

LINE VOLTAGE/CURRENT:  
 30 AMP., 120/250 VAC  
 25 AMP./40°C, 250 VAC  
 50-60Hz  
 40°C

LINE FREQUENCY:  
 MAX. CASE RISE  $\theta$  RATED CURRENT:  
 MAX. LEAKAGE CURRENT, EACH  
 LINE TO GROUND  
 OPERATING AMBIENT TEMP. RANGE:  
 -10°C TO +40°C  $\theta$  RATED CURRENT,  $I_r$

IN AN AMBIENT,  $T_a$ , HIGHER THAN 40°C, THE MAXIMUM OPERATING CURRENT,  $I_o$ , IS AS FOLLOWS:

$$I_o = I_r \sqrt{\frac{85-T_a}{45}}$$

RELIABILITY SPECIFICATIONS:

STORAGE TEMPERATURE:  
 -40°C TO +85°C

HUMIDITY:  
 21 DAYS  $\theta$  40°C 95% RH

CURRENT OVERLOAD TEST:  
 6 TIMES RATED CURRENT FOR 8 SECONDS

TEST SPECIFICATIONS:

INDUCTANCE:  
 1.73 mH NOMINAL

CAPACITANCE: (MEASURED  $\theta$  1 KHz, 0.25 VAC MAX., 25°C  $\pm$ 1°C)  
 LINE TO GROUND:  
 .01  $\mu$ F  $\pm$ 20%

LINE TO LINE:  
 1.08  $\mu$ F  $\pm$ 20%

DISCHARGE RESISTOR  
 235 K $\Omega$

LINE/GROUND AND LINE/LINE  
 INSULATION RESISTANCE  
 6000 M $\Omega$  (MIN) AT 100 VDC  
 20°C AND 50% RH

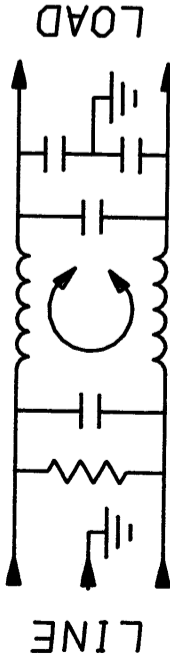
RECOMMENDED RECEIVING INSPECTION HIPOT:

LINE TO GROUND:  
 2250 VDC FOR 1 MINUTE

LINE TO LINE:  
 1450 VDC FOR 1 MINUTE

FILTER APPROVAL:

THE BEST WAY TO SELECT AND QUALIFY A FILTER IS FOR YOUR ENGINEERING TO TEST THE UNIT IN YOUR EQUIPMENT.



50  $\Omega$  - 50  $\Omega$  (MINIMUM) INSERTION LOSS

FREQUENCY MHz	.01	.05	.2	.5	1.0	2.0	5.0	10	20	30
COMMON dB	2	9	20	27	31	38	46	51	44	39
DIFF. dB	5	13	14	60	60	60	51	43	43	43

This document is proprietary to CORCOM INC. and is not to be reproduced nor used for manufacturing purposes except on CORCOM's order or prior written consent.

TOLERANCE EXCEPT AS NOTED  
 DECIMAL: .XXX .XX .X ANGLES  
 ENGLISH:  $\pm$ .025  $\pm$ 1.  
 METRIC:  $\pm$  —

MATERIAL:

AS SUPPLIED

FINISH:

AS SUPPLIED

**CORCOM**  
 LIBERTYVILLE, IL 60048

POWER LINE FILTER

SCALE	DATE	DRG. NO.	REV.
NTS	9-12-89		
DRW. BY	ORIGINATOR		
TDL	CW		

30VSK6.01

