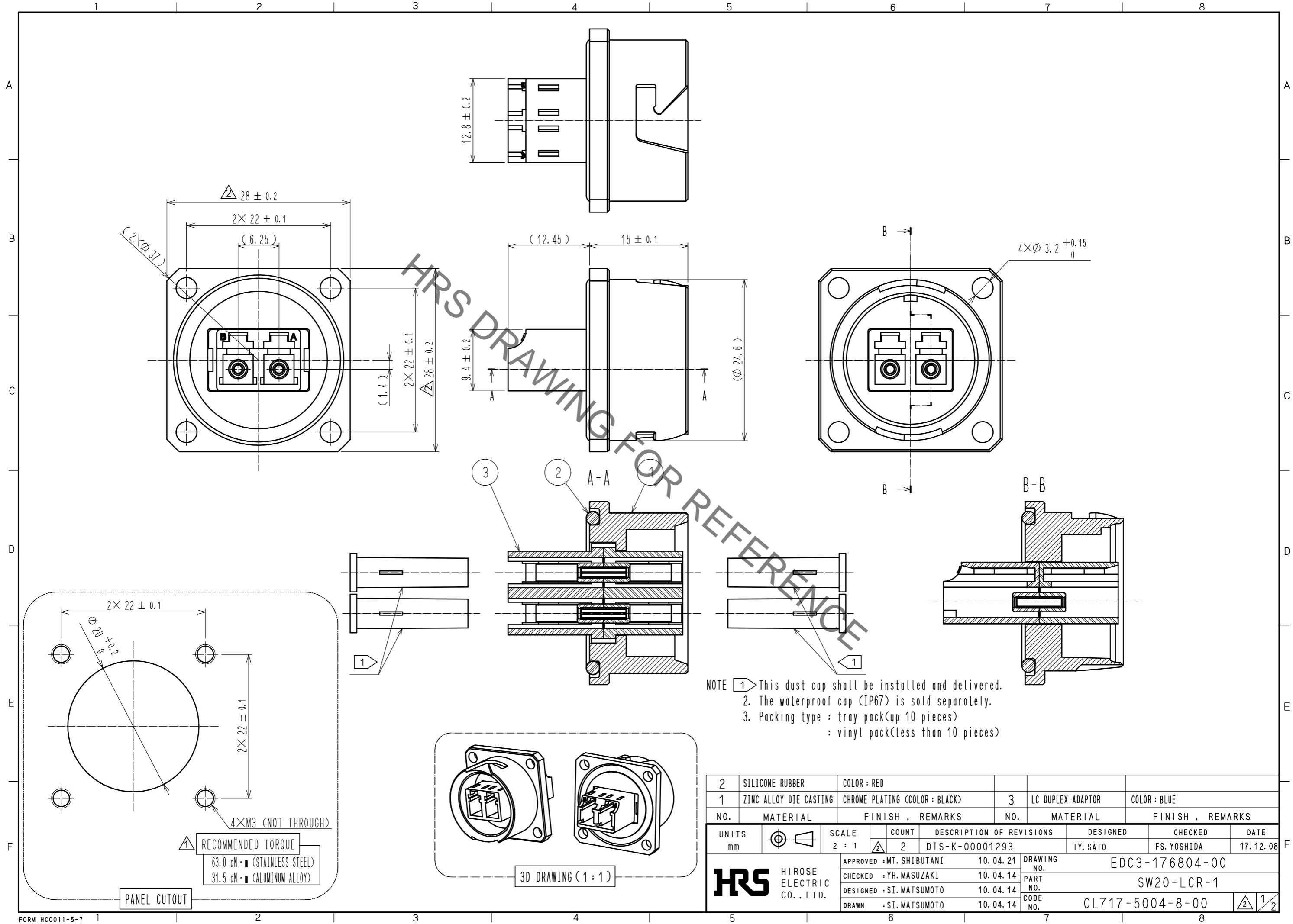


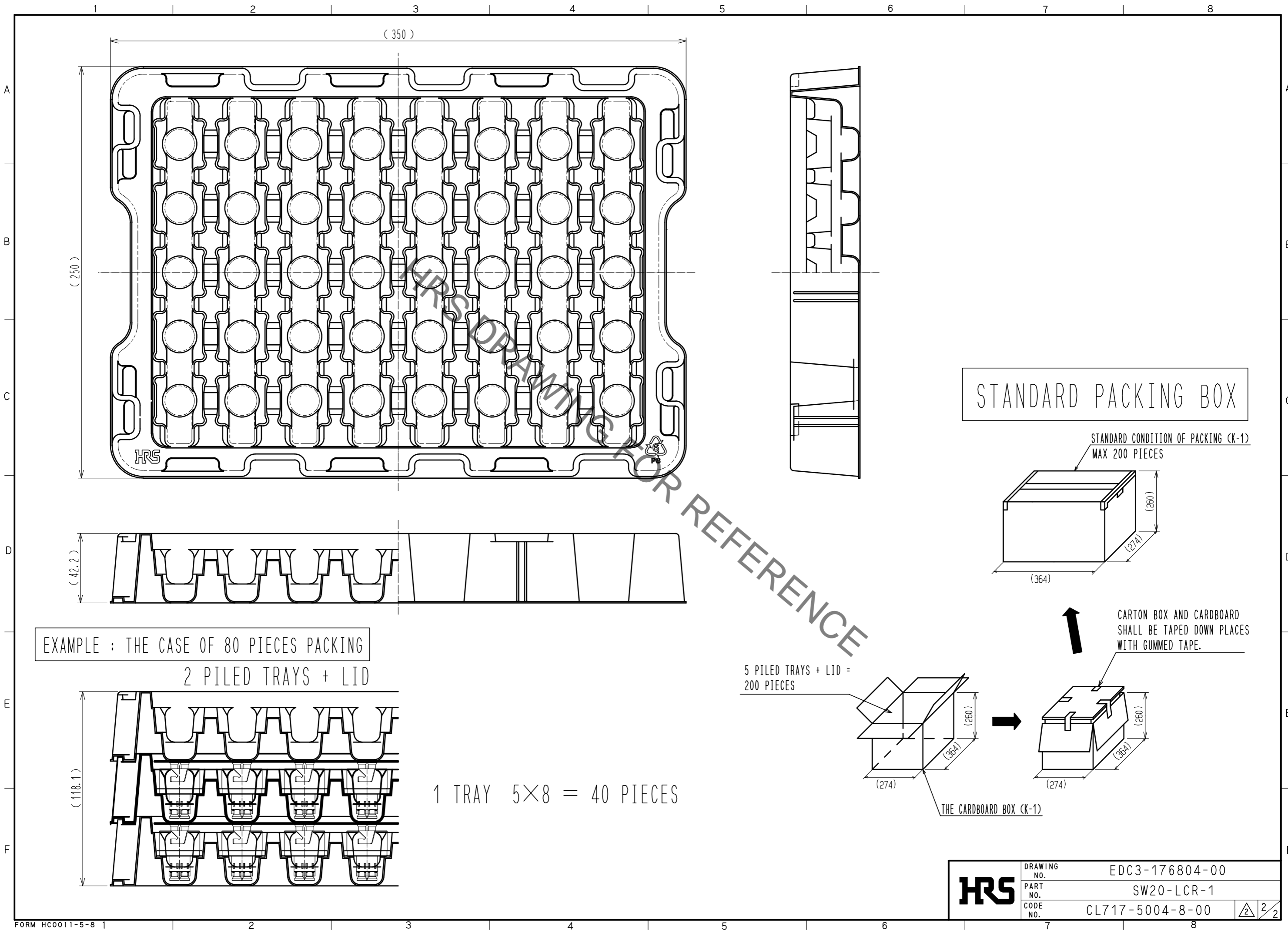
Jul.1.2019 Copyright 2019 HIROSE ELECTRIC CO., LTD. All Rights Reserved.
 In case of consideration for using Automotive equipment / device which demand high reliability, kindly contact our sales window correspondents.



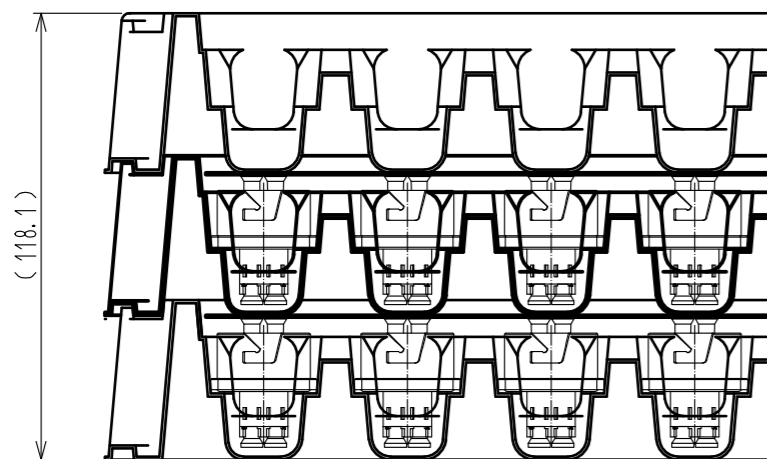
FORM HC0011-5-7

2	SILICONE RUBBER	COLOR : RED				
1	ZINC ALLOY DIE CASTING	CHROME PLATING (COLOR : BLACK)	3	LC DUPLEX ADAPTOR	COLOR : BLUE	
NO.	MATERIAL	FINISH . REMARKS	NO.	MATERIAL	FINISH . REMARKS	
UNITS		SCALE	COUNT	DESCRIPTION OF REVISIONS		DESIGNED
mm		2 : 1	2	DIS-K-00001293		TY. SATO
				APPROVED : MT. SHIBUTANI	10.04.21	CHECKED
				CHECKED : YH. MASUZAKI	10.04.14	FS. YOSHIDA
				DESIGNED : SI. MATSUMOTO	10.04.14	DATE
				DRAWN : SI. MATSUMOTO	10.04.14	17.12.08
HRS HIROSE ELECTRIC CO., LTD.			DRAWING NO.		EDC3-176804-00	
			PART NO.		SW20-LCR-1	
			CODE NO.		CL717-5004-8-00	
						$\frac{1}{2}$

Jul.1.2019 Copyright 2019 HIROSE ELECTRIC CO., LTD. All Rights Reserved.
 In case of consideration for using Automotive equipment / device which demand high reliability, kindly contact our sales window correspondents.



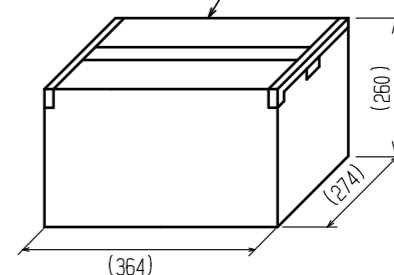
EXAMPLE : THE CASE OF 80 PIECES PACKING
 2 PILED TRAYS + LID



1 TRAY 5x8 = 40 PIECES

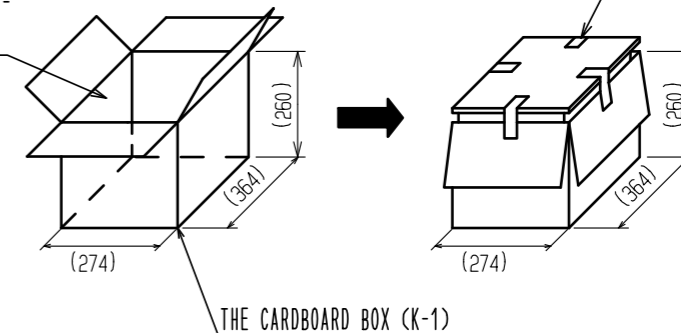
STANDARD PACKING BOX

STANDARD CONDITION OF PACKING (K-1)
 MAX 200 PIECES



CARTON BOX AND CARDBOARD
 SHALL BE TAPED DOWN PLACES
 WITH GUMMED TAPE.

5 PILED TRAYS + LID =
 200 PIECES



HRS	DRAWING NO.	EDC3-176804-00	
	PART NO.	SW20-LCR-1	
	CODE NO.	CL717-5004-8-00	2/2