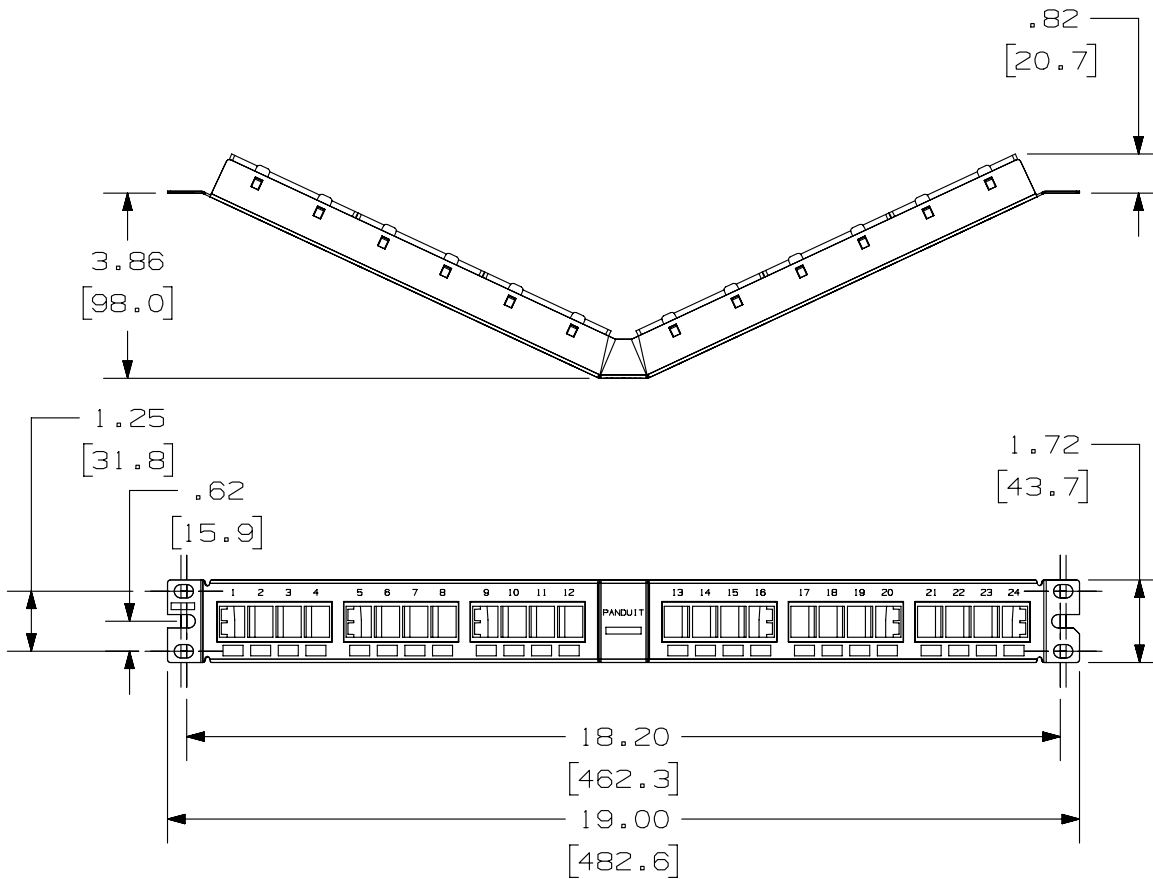


2

1

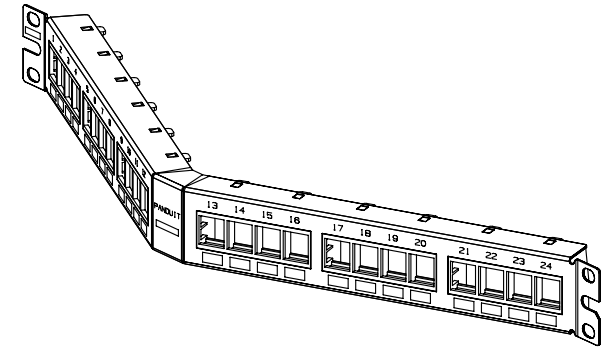
THIS COPY IS PROVIDED ON A RESTRICTED BASIS AND IS NOT TO BE USED IN ANY WAY DETRIMENTAL TO THE INTERESTS OF PANDUIT CORP.



PANDUIT P/N	WEIGHT
NKPPA24FMY	8.05 LB/10 PCS (3653.6 g/10 PCS)

NOTES:

- SEE CURRENT CATALOG FOR VARIOUS APPLICATIONS WITH THIS WIRING SYSTEM.
- THE FLUSH MOUNT PATCH PANEL IS DESIGNED FOR MOUNTING TO 19" UNIVERSAL RACKS.
- PACKAGE CONTENTS:
 - (1) -24 PORT ANGLED STAMPING
 - (6) -4 POSITION FACEPLATE (ASSEMBLED TO PANEL)
 - (1) -SCREW KIT (INCLUDES FOUR #12-24 SCREWS)
 - (1) -SCREW KIT (INCLUDES FOUR M6 SCREWS)
- DIMENSIONS IN PARENTHESIS ARE IN METRIC.



A

PART NUMBER		NKPPA24FMY	
TITLE			
NETKEY ANGLED 24 PORT FLUSH MOUNT		MODULAR PATCH PANEL	
CUSTOMER DRAWING			
ITEM REVISION NAME		M02479D0/01	
DATASET FILE NAME		M02479D0_DC95/00B	
UNLESS OTHERWISE SPECIFIED, DIMENSIONAL TOLERANCES ARE: IN [mm]		MATERIAL:	
.x ± .xx ± .03 [.8]		STAMPING: 20 GAGE C.R.S. FACEPLATE: ABS	
.xxx ± .010 [.3]		DRAWING NUMBER:	
ANGLES ±		02479-095	
THIRD ANGLE PROJECTION		SHT 1 OF 1	
DRAWN BY	DATE	CHK	SCALE
JSP	4-19-06	MJD	NONE
DESCRIPTION		ECN	SIZE
A. UPDATED TITLE BLOCK.		02479-095	A
RELEASED TO PRODUCTION		02479-095	

REV	DATE	BY	CHK	APR	DESCRIPTION	ECN
1	5-20-14	MDJR	REFR	JCK	A. UPDATED TITLE BLOCK.	02479-095
R	4-19-06	JSP	MJD	MJD	RELEASED TO PRODUCTION	02479-095

2

1

D10100DA/14