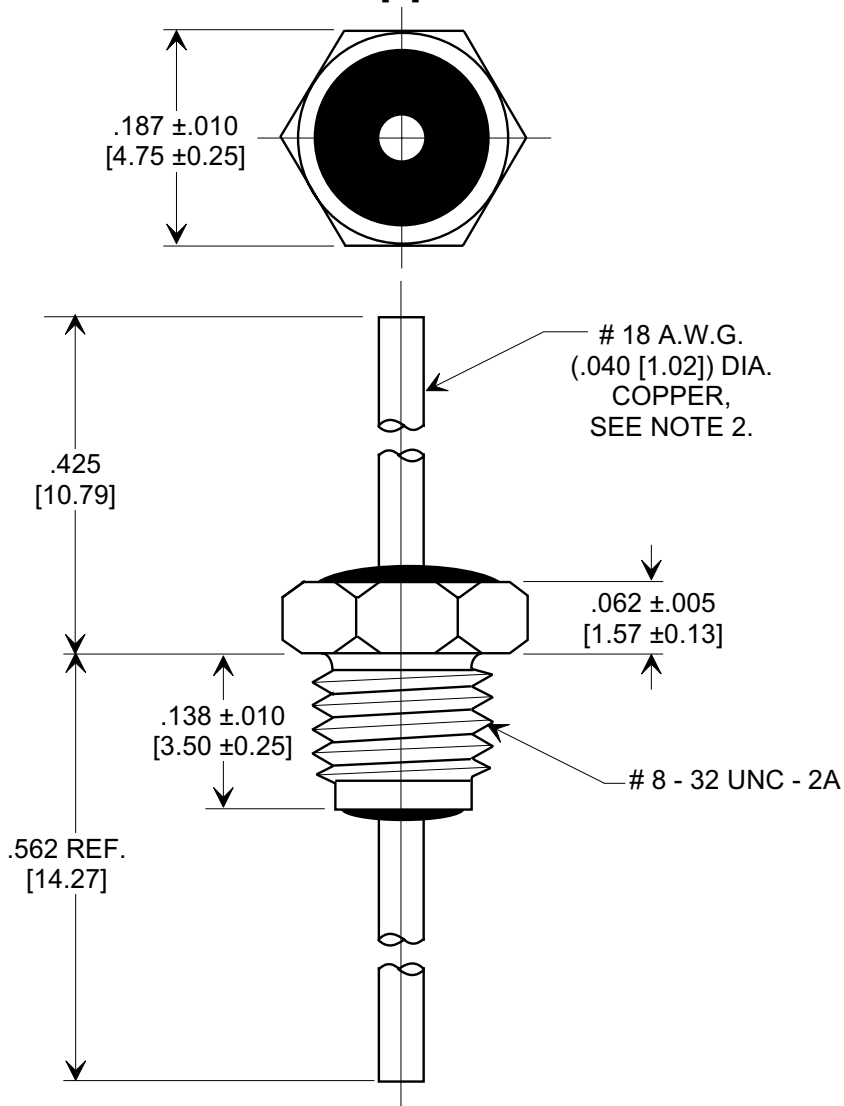
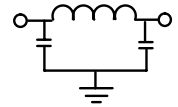
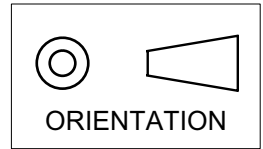


MARKETING SALES DRAWING
DIMENSIONS IN INCHES - DO NOT SCALE THIS DRAWING
DIMENSIONS IN METRIC - []

Electrical Testing
per Tusonix standard
test plans and Mil-Std-202
Test Methods.



NOTES:

- TUSONIX STANDARD PART NUMBER: 4205.001.
TUSONIX RoHS COMPLIANT PART NUMBER: 4205.001 LF.
CUSTOMER MUST SPECIFY STANDARD OR RoHS PART NUMBER WHEN ORDERING.
- LEAD FINISH: STANDARD PART #: 60/40 SOLDER PLATED. RoHS PART #: SILVER PLATED.
- SILVER PLATED STEEL BUSHING.
- SILVER PLATED INTERNAL TOOTH LOCKWASHER AND #8-32 UNC-2B HEX NUT SUPPLIED.
MAX. MOUNTING TORQUE 5 LB. INCHES [.565 N-m].
- PART MARKING: TRADEMARK AND VARIATION NUMBER ON HEX FLATS.
STANDARD PART: BLACK INK. RoHS PART: GREEN INK.

MIN. CAP. (pF)	WORKING VOLTAGE (VVdc)		CURRENT Idc	I.R. MIN. @ 100 (VDC)	DWV (VDC)	MINIMUM NO LOAD INSERTION LOSS (dB) AT 25°C PER MIL-STD-220			
	85° C	125° C				10 MHz	100 MHz	1 GHz	10 GHz
1500	250	125	15	10 G Ω	500	5	35	60	60

X-2015 Rev-0 REVISION RECORD Original Release C.O. 6600 REVISED & REDRAW TO COMP. FORMAT L.E. 02-01-00 20000201-6-01 ADDED NOTES 1,2 & 5. NOTE 3 REVISED. S.M. 06-09-05 20050607-1-02 ADDED IR & DWV. S.M. 11-30-05 20051102-4-02	0		REVISION RECORD BUSHING STYLE EMI FILTER	--TOLERANCES-- Unless Otherwise Specified		Title BUSHING STYLE EMI FILTER		
	DECIMAL ± .031 [.79]			Drawn L.E. 02-01-00		Scale 6 X		
	TUSONIX TUCSON, ARIZONA		Approved T.C. 02-01-00		A		4205-001	
	3							