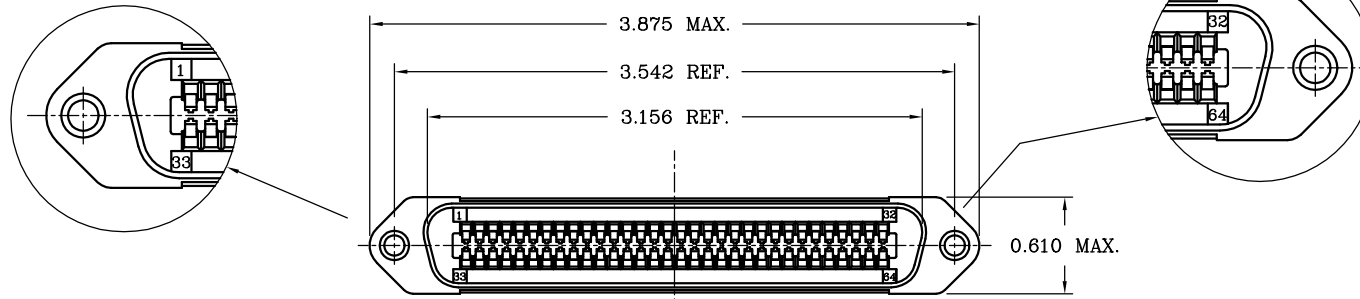
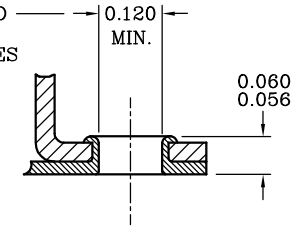


This document is the property of Amphenol Corporation and is delivered on the express condition that it is not to be disclosed, reproduced or used, in whole or in part, for manufacture or sale by anyone other than Amphenol Corporation without its prior consent, & that no right is granted to disclose or to use any information in this document.

REVISIONS				
SYM	ECN	DESCRIPTION	DATE	APPROVED
1	HK#	INITIAL RELEASE	10/17/01	Y.M.LEE
2	HK#	Add chop of ROHS	8/2/07	Y.M.LEE



SHELLS RIVETED TOGETHER AT MOUNTING HOLES AS SHOWN.



SECTION THRU MOUNTING HOLE

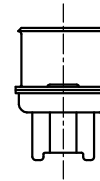
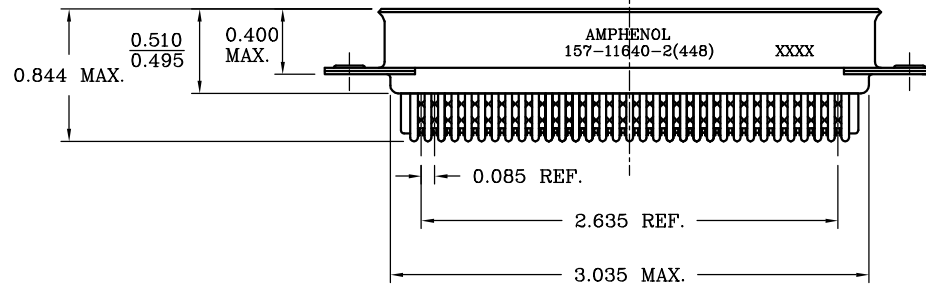


TABLE 1

CONNECTOR SIZES	AVERAGE MATING FORCE (POUNDS)
14	5
24	8
36	12
50	15
64	19

SPECIFICATIONS:

- 1) INSULATION DISPLACEMENT CONTACTS: TO ACCOMMODATE 22, 24 & 26 AWG SOLID AND 26-28 STRANDED CONNECTOR WIRES.
- 2) DIELECTRIC: PBT GLASS FIBER RE-INFORCED, UL-94V0
- 3) CONTACT MATERIAL: COPPER ALLOY
- 4) CONTACT: 30 MICRO-INCHES MIN. GOLD MATING AREA: 3-5 MICRO-INCHES GOLD TERMINAL AREA: 50 MICRO-INCHES MIN. NICKEL UNDERPLATING ALL OVER.
- 5) SHELL MATERIAL: ZINC PLATED STEEL WITH CLEAR CHROMATE COATING
- 6) CURRENT CAPACITY: 5 AMPS/CONTACT
- 7) VOLTAGE RATING: 700 VOLTS D.C. AT SEA LEVEL
200 VOLTS D.C. AT 70,000 FEET
- 8) INSULATION RESISTANCE: >5000 M OHM
- 9) DIELECTRIC WITHSTANDING VOLTAGE: 1200 VAC (RMS) AT SEA LEVEL
- 10) CONNECTOR MATING FORCE: REFER TO TABLE 1.

- 11) CONTACT RETENTION FORCE: 2 LBS MAX.
- 12) DURABILITY: 250 CYCLES MIN.
- 13) VIBRATION: NO INTERRUPTIONS < 1u SEC.
- 14) OPERATING TEMPERATURE: -55°C TO +105°C (-67°F TO +221°F)
- 15) 157-11640-2(448) IS AN EXCLUSIVE PART NUMBER FOR BEST-TRONIC ONLY.

CUSTOMER INFORMATION DRAWING

UNLESS OTHERWISE SPECIFIED TOLERANCES U.S. METRIC .X +/- 0.020 .XX +/- 0.010 .XXX +/- 0.005 FRACTIONS +/- ANGLES +/- 1°	APPROVAL	DATE	Amphenol
	DRAWN xs.guo	8/2/07	
FOR MATERIALS AND FINISHES SEE NOTES	CHECKED		TITLE 64 CONTACT PLUG ASSEMBLY RACK & PANEL-MICROPIERCE, MTG HOLE & 22 AWG WIRE
REMOVE SHARP EDGES	CHECKED		
DIMENSIONS	DRAWING FILE : \\DRAWING\157\C157116402448.DWG		SIZE DRAWING NO.
U.S. INCHES	ANGLE OF PROJECTION		A3 C157-11640-2(448)
-(METRIC)- -(MM)-			REV. 2
	SCALE NONE	SHEET 1 OF 1	