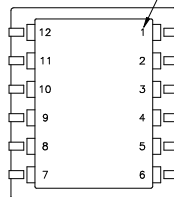


CUSTOMER TERMINAL	RoHS	LEAD(Pb)-FREE
Sn100%	Yes	Yes

more than you expect

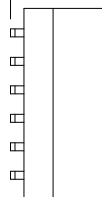


TERM. NO.'s FOR REF. ONLY



-A- .004[.10]
12 SURFACES

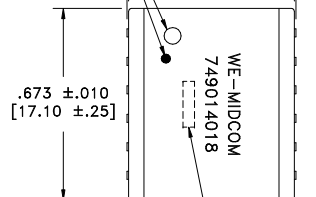
.331 ±.010
[8.40 ±.25]



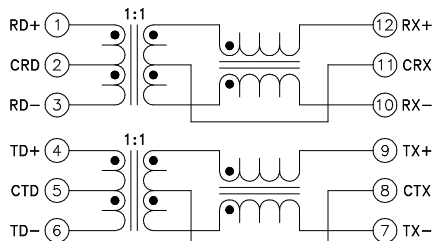
DOT/RECESS LOCATES TERM. #1

.600 [15.24]

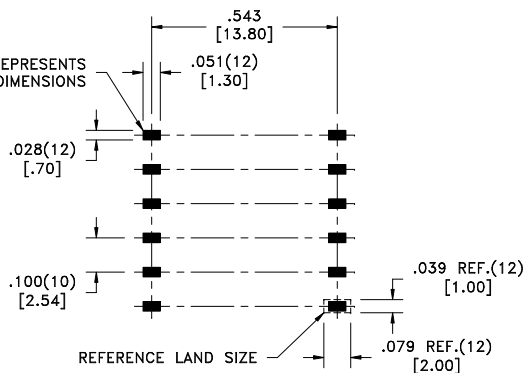
.581 ±.010
[14.75 ±.25]



LOT CODE & DATE CODE 6C



AREA REPRESENTS
TERMINAL PAD DIMENSIONS



CUSTOMER TO DETERMINE LAND LAYOUT

ELECTRICAL SPECIFICATIONS @ 25°C unless otherwise noted:

PARAMETER	TEST CONDITIONS	VALUE
INDUCTANCE	12-10 100kHz, 100mVAC, 8mADC, Lp	350uH min.
INDUCTANCE	9-7 100kHz, 100mVAC, 8mADC, Lp	350uH min.
6C DIELECTRIC	PRI-SEC 4800Vrms, 1 second	4000Vrms, 1 minute
URNS RATIO	(1-3):(12-10)	1:1, ±2%
URNS RATIO	(4-6):(9-7)	1:1, ±2%
INSERTION LOSS	500k - 100MHz	-1.2dB max.
RETURN LOSS	500k - 30MHz	-18dB min.
RETURN LOSS	30M - 45MHz	-15dB min.
RETURN LOSS	45M - 60MHz	-13dB min.
RETURN LOSS	60M - 80MHz	-10dB min.
CROSSTALK	1M - 100MHz	-40dB min.
DCMR	500k - 100MHz	-33dB min.

GENERAL SPECIFICATIONS:

OPERATING TEMPERATURE RANGE: 0°C to +70°C.

Designed to comply with the following requirements as defined by IEC60601-1 and IEC60950-1:

- Basic insulation at a working voltage of 250Vrms.

COPLANARITY: All 40 terminals must lie on a plane within .004 [.10] of Surface A after lead tinning.

REV.	DATE	Packaging Specifications	CONVENTION PLACEMENT
6C	3/10	Method: Tape & Reel 6B PKG-0645	
6B	10/09	www.midcom-inc.com	
6A	4/09	REVISIONS: SEE SHEET 1	

Tolerances unless otherwise specified:
Angles: ±1° Decimals: ±.005 [.13]
Fractions: ±1/64 Footprint: ±.005 [.13]

This drawing is dual dimensioned. Dimensions in brackets are in millimeters.

DRAWING TITLE
TRANSFORMER
eiSos p/n: 749014018

PART NO.
749014018
SHEET 2 OF 8

