

LTC3839EUH Fast Transient Step-Down DC/DC Converter

DESCRIPTION

Demonstration circuit 1632A is a single output 1.5V/40A dual phase synchronous buck converter operating with a switching frequency of 300kHz over an input voltage range of 4.5V to 14V. The controlled on-time valley current mode architecture of the LTC3839 allows for a fast load step response (see Figure 4). The load step response can be tested with the on-board load step circuit and a bench pulse generator.

Other features of the board include remote sensing, selectable light load operating modes of forced continuous mode (FCM) and discontinuous mode (DCM), a PLLIN pin for synchronizing to an external clock, a CLKOUT pin, an EXTV_{CC} pin to reduce losses in the controller, and

RUN and TRACK/SS pins. Up to 12-phase operation can be achieved by daisy-chaining the CLKOUT and PLLIN signals of multiple boards and programming the relative phase with the PHASMD jumper.

The demo board uses a high density, two sided drop-in layout. The entire converter, excluding the bulk output and input capacitors, fits within a compact 1.6" × 1.2" area on the board. The package style for the LTC3839EUH is a 32-lead 5mm × 5mm QFN with an exposed ground pad.

Design files for this circuit board are available at <http://www.linear.com/demo>

LT, LT, LTC, LTM, Linear Technology and the Linear logo are registered trademarks of Linear Technology Corporation. All other trademarks are the property of their respective owners.

PERFORMANCE SUMMARY (T_A = 25°C)

PARAMETER	CONDITIONS	VALUE
Minimum Input Voltage		4.5V
Maximum Input Voltage		14V
Output Voltage V _{OUT}	I _{OUT} = 0A to 40A, V _{IN} = 4.5V to 14V	1.5V ± 2%
V _{OUT} Maximum Output Current, I _{OUT}	V _{IN} = 4.5V to 14V, V _{OUT} = 1.5V	40A
Nominal Switching Frequency		300kHz
Efficiency (see Figures 2 and 3)	V _{OUT} = 1.5V, I _{OUT} = 40A, V _{IN} = 12V	90.7% Typical

QUICK START PROCEDURE

Demonstration circuit 1632A is easy to set up to evaluate the performance of the LTC3839EUH. Please refer to Figure 1 for proper measurement equipment setup and follow the procedure below.

1) With power off, connect the input supply, load and meters as shown in Figure 1. Preset the load to 0A and V_{IN} supply to 0V. Place jumpers in the following positions:

JP1	RUN	ON
JP3	MODE	FCM

2) Adjust the input voltage to be between 4.5V and 14V. V_{OUT} should be $1.5V \pm 2\%$.

3) Next, apply 40A load and re-check V_{OUT} .

4) Once the DC regulation is confirmed, observe the output voltage ripple, load step response, efficiency and other parameters.

Note 1. Use the BNC connector labeled V_{OUT} to measure the output voltage ripple.

Note 2. Do not apply the load from the VO_SNS+ pin to the VO_SNS- pin. This may damage the converter. These pins are only intended to monitor the voltage across the bulk output capacitors at C_{OUT1-4} .

Load Step Testing (Optional)

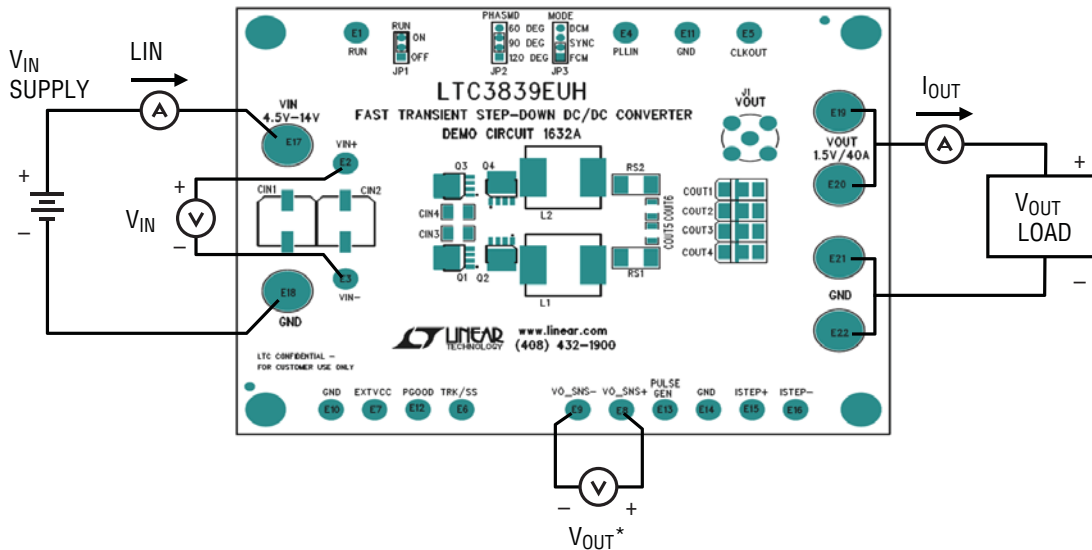
Demonstration circuit 1632A provides a simple load step circuit consisting of a MOSFET and sense resistor for each rail. To apply a load step, follow the steps below.

1) Pre-set the amplitude of a pulse generator to 0.0V and the duty cycle to 5% or less.

2) Connect the scope to the V_{OUT} BNC connectors for the rail under test with a coax cable. To monitor the load step current, connect the scope probe across the $I_{STEP\pm}$ pins.

3) Connect the output of the pulse generator to the PULSE GEN pin and connect the return to the GND pin.

4) With the converter running, slowly increase the amplitude of the pulse generator output to provide the desired load step pulse height. The scaling for the LOAD STEP signal is 5mV/Amp.



* MONITOR THE VOLTAGE ACROSS C_{OUT5} FOR ACCURATE EFFICIENCY MEASUREMENTS.

Figure 1. Proper Measurement Equipment Setup

QUICK START PROCEDURE

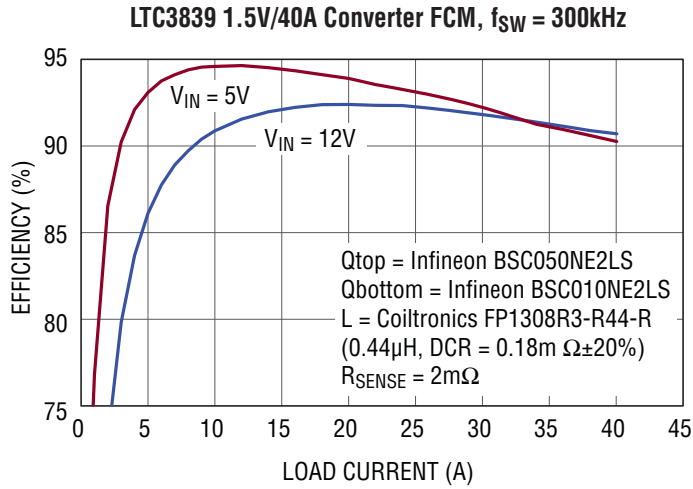


Figure 2. Efficiency Curves for the DC1632A in FCM

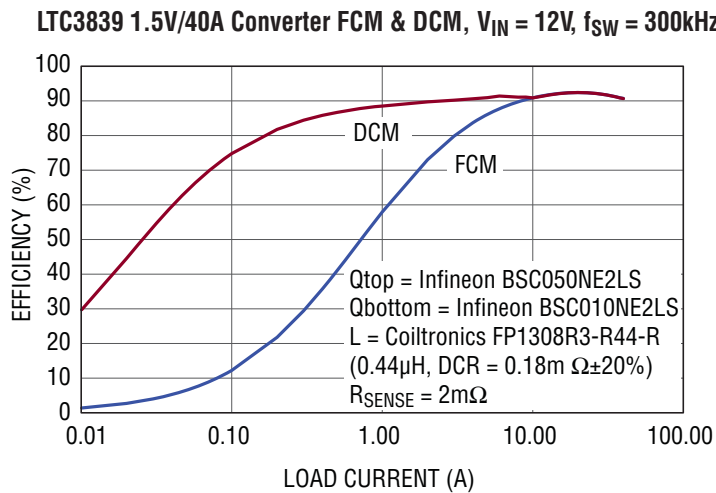


Figure 3. Efficiency Curves for the DC1632A in FCM and DCM

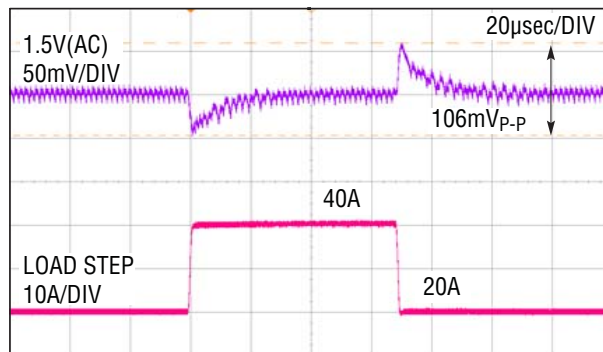


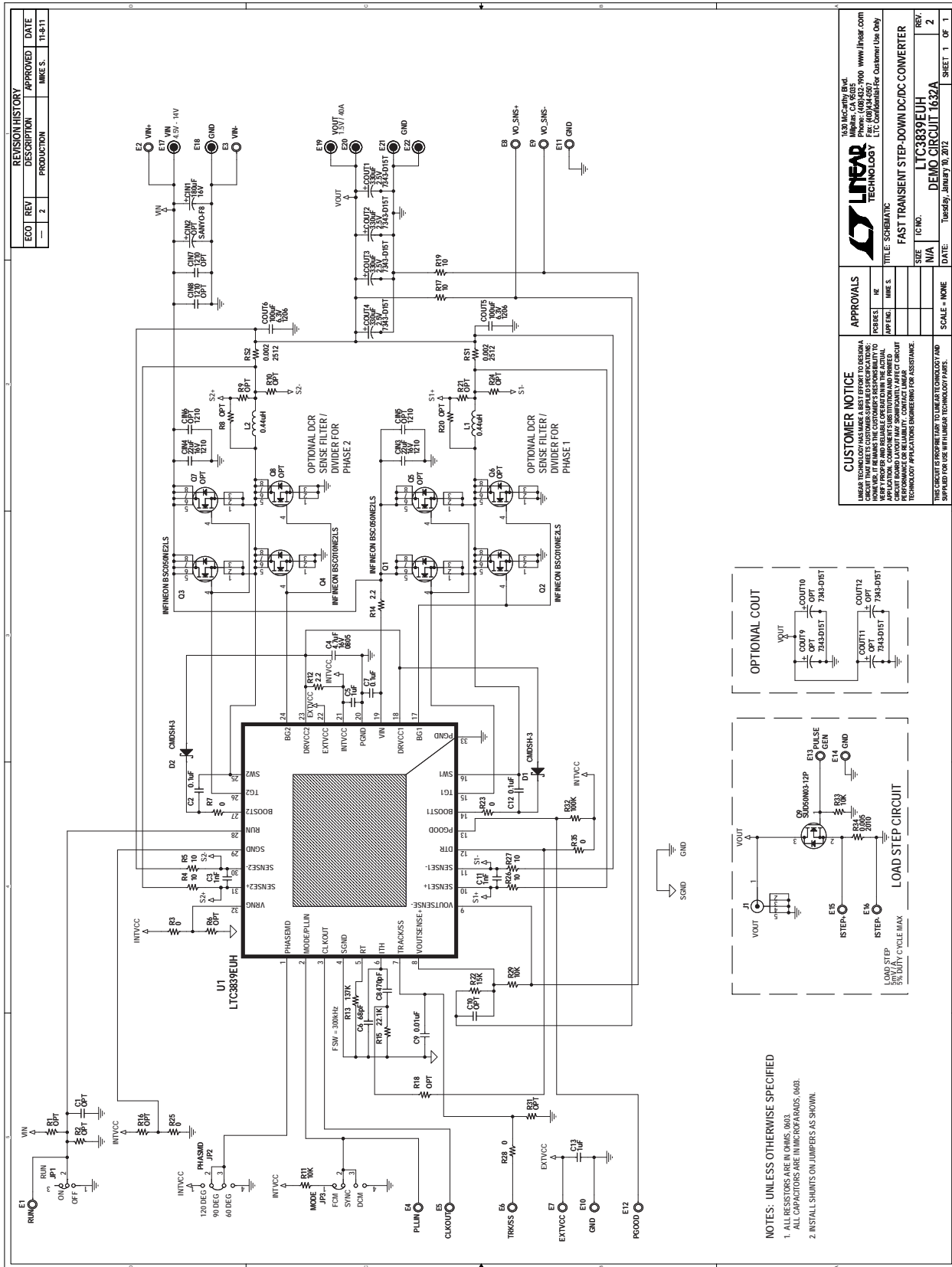
Figure 4. Load Step Response of the DC1632A at $V_{IN} = 12V$. $C_{OUT} = 4 \times$ Sanyo 2R5TPE330M9 || $2 \times 100\mu F$ X5R 6.3V 1206, $L1, 2 = 0.44\mu H$, $f_{SW} = 300kHz$

DEMO MANUAL DC1632A

PARTS LIST

ITEM	QTY	REFERENCE	PART DESCRIPTION	MANUFACTURER/PART NUMBER
Required Circuit Components				
1	2	C13, C5	CAP, X5R 1 μ F 16V 10% 0603	AVX 0603YD105KAT2A
2	3	C2, C7, C12	CAP, X5R 0.1 μ F 25V 10% 0603	AVX 06033C104KAT2A
3	2	C3, C11	CAP, X7R 1000pF 16V 0603	AVX 0603YC102KAT2A
4	1	C4	CAP, X5R 4.7 μ F 16V 10% 0805	AVX 0805YD475KAT2A
5	1	C6	CAP, NPO 68pF 25V 10% 0603	AVX 06033A680KAT2A
6	1	C8	CAP, X7R 470pF 16V 5% 0603	AVX 0603YC471JAT2A
7	1	C9	CAP, X5R 0.01 μ F 25V 10% 0603	AVX 06033C103KAT2A
8	1	CIN1	CAP, 180 μ F 16V	SANYO 16SVP180MX
9	2	CIN3, CIN4	CAP, X5R 22 μ F 16V 1210	MURATA GRM32ER61C226KE20L
10	4	COU1, COU2, COU3, COU4	CAP, 330 μ F 2.5V SIZE 7343	SANYO 2R5TPE330M9
11	2	COU6, COU5	CAP, X5R 100 μ F 6.3V 1206	MURATA GRM31CR60J107ME 39L
12	2	D1, D2	DIODE, SCHOTTKY SOD-323	CENTRAL SEMI CMDSH-4E TR
13	2	L1, L2	IND, 0.44 μ H	COILTRONICS FP1308R3-R44-R
14	2	Q1, Q3	MOSFET, N CHANNEL POWERPAK SO-8	INFINEON BSC050NE2LS
15	2	Q2, Q4	MOSFET, N CHANNEL POWERPAK SO-8	INFINEON BSC010NE2LS
16	3	R11, R29, R33	RES, CHIP 10k 1% 0603	VISHAY CRCW060310K0FKEA
17	1	R15	RES, CHIP 22.1k 1% 0603	VISHAY CRCW060322K1FKEA
18	1	R13	RES, CHIP 137k 1% 0603	VISHAY CRCW0603137KFKEA
19	2	R14, R12	RES, CHIP 2.2 1% 0603	VISHAY CRCW06032R20FKEA
20	1	R22	RES, CHIP 15k 1% 0603	VISHAY CRCW060315K0FKEA
21	6	R3, R7, R23, R28, R35, R25	RES, CHIP 0 0603	VISHAY CRCW06030000Z0EA
22	1	R32	RES, CHIP 100k 1% 0603	VISHAY CRCW0603100KFKEA
23	6	R4, R5, R17, R19, R26, R27	RES, CHIP 10 1% 0603	VISHAY CRCW060310R0FKEA
24	2	RS1, RS2	RES, CHIP 0.002 1W 1% 2512	VISHAY WSL25122L000FEA
25	1	U1	IC LTC3839EUH QFN 5mm x 5mm	LINEAR TECH. LTC3839EUH#PBF
Additional Circuit Components				
1	0	CIN2	CAP, SVP-F8, OPT	
2	0	CIN5, CIN6, CIN7, CIN8	CAP, 1210, OPT	
3	0	C1, C10	CAP, 0603, OPT	
4	0	COU9-COU12	CAP, SIZE 7343, OPT	
5	0	Q5-Q8	POWERPAK SO-8, OPT	
6	1	Q9	N-Channel MOSFET, TO-252	VISHAY SUD50N03-12P-E3
7	0	R1, R2, R6, R16, R18, R21, R31, R8, R9, R10, R20, R24	RES, CHIP 0603, OPT	
8	1	R33	RES, CHIP 10k 1% 0603	VISHAY CRCW060310K0FKEA
9	1	R34	RES, CHIP 0.005 1W 1% 2010	VISHAY WSL20105L000FEA
Hardware				
1	16	E1-E16	TESTPOINT, TURRET .095"	MILL-MAX 2501-2-00-80-00-00-07-0
2	1	JP1	2mm SINGLE ROW HEADER 3 PIN	SAMTEC TMM-103-02-L-S
3	2	JP3, JP2	2mm SINGLE ROW HEADER 4 PIN	SAMTEC TMM-104-02-L-S
4	6	E17-E22	JACK, BANANA	KEYSTONE 575-4
5	1	J1	CONN, BNC, 5PINS	CONNEX 112404
6	4	(STAND-OFF)	STAND-OFF, NYLON 0.25"	KEYSTONE 8831 (SNAP ON)

SCHEMATIC DIAGRAM



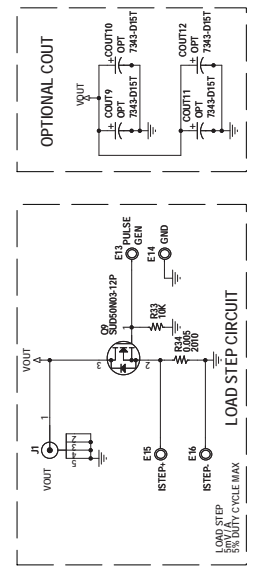
REVISION HISTORY			
ECO	REV	DESCRIPTION	APPROVED DATE
—	2	PRODUCTION	MKE S. 11-8-11

APPROVALS		TITLE: SCHEMATIC		SHEET 1 OF 1	
DESIGNER	DATE	DATE	DATE	DATE	DATE

CUSTOMER NOTICE	
LINEAR TECHNOLOGY MAKES A BEST EFFORT TO DESIGN A CIRCUIT THAT MEETS CUSTOMER-SUPPLIED SPECIFICATIONS. HOWEVER, CUSTOMER-SUPPLIED SPECIFICATIONS MAY VARY FROM THE ACTUAL PERFORMANCE OF THE ACTUAL CIRCUIT. CUSTOMER SHOULD VERIFY THE ACTUAL PERFORMANCE OF THE CIRCUIT UNDER ALL OPERATING CONDITIONS. CONTACT LINEAR TECHNOLOGY APPLICATION ENGINEERING FOR ASSISTANCE.	

FAST TRANSIENT STEP-DOWN DC/DC CONVERTER	
LINEAR TECHNOLOGY	1630 McCarty Blvd., Milpitas, CA 95035-5090, www.linear.com
TEL: (415) 874-1000	FAX: (415) 874-1007
WWW.LINEAR.COM	LINEAR TECHNOLOGY
DATE: Tuesday, January 10, 2012	SCALE: NONE
REV: 2	SHEET 1 OF 1

NOTES: UNLESS OTHERWISE SPECIFIED
 1. ALL RESISTORS ARE IN OHMS (Ω)
 ALL CAPACITORS ARE IN MICROFARADS (μF)
 2. INSTALL SHORTS ON JUMPERS AS SHOWN.



DEMO MANUAL DC1632A

DEMONSTRATION BOARD IMPORTANT NOTICE

Linear Technology Corporation (LTC) provides the enclosed product(s) under the following **AS IS** conditions:

This demonstration board (DEMO BOARD) kit being sold or provided by Linear Technology is intended for use for **ENGINEERING DEVELOPMENT OR EVALUATION PURPOSES ONLY** and is not provided by LTC for commercial use. As such, the DEMO BOARD herein may not be complete in terms of required design-, marketing-, and/or manufacturing-related protective considerations, including but not limited to product safety measures typically found in finished commercial goods. As a prototype, this product does not fall within the scope of the European Union directive on electromagnetic compatibility and therefore may or may not meet the technical requirements of the directive, or other regulations.

If this evaluation kit does not meet the specifications recited in the DEMO BOARD manual the kit may be returned within 30 days from the date of delivery for a full refund. **THE FOREGOING WARRANTY IS THE EXCLUSIVE WARRANTY MADE BY THE SELLER TO BUYER AND IS IN LIEU OF ALL OTHER WARRANTIES, EXPRESSED, IMPLIED, OR STATUTORY, INCLUDING ANY WARRANTY OF MERCHANTABILITY OR FITNESS FOR ANY PARTICULAR PURPOSE. EXCEPT TO THE EXTENT OF THIS INDEMNITY, NEITHER PARTY SHALL BE LIABLE TO THE OTHER FOR ANY INDIRECT, SPECIAL, INCIDENTAL, OR CONSEQUENTIAL DAMAGES.**

The user assumes all responsibility and liability for proper and safe handling of the goods. Further, the user releases LTC from all claims arising from the handling or use of the goods. Due to the open construction of the product, it is the user's responsibility to take any and all appropriate precautions with regard to electrostatic discharge. Also be aware that the products herein may not be regulatory compliant or agency certified (FCC, UL, CE, etc.).

No License is granted under any patent right or other intellectual property whatsoever. **LTC assumes no liability for applications assistance, customer product design, software performance, or infringement of patents or any other intellectual property rights of any kind.**

LTC currently services a variety of customers for products around the world, and therefore this transaction **is not exclusive**.

Please read the DEMO BOARD manual prior to handling the product. Persons handling this product must have electronics training and observe good laboratory practice standards. **Common sense is encouraged.**

This notice contains important safety information about temperatures and voltages. For further safety concerns, please contact a LTC application engineer.

Mailing Address:

Linear Technology
1630 McCarthy Blvd.
Milpitas, CA 95035

Copyright © 2004, Linear Technology Corporation