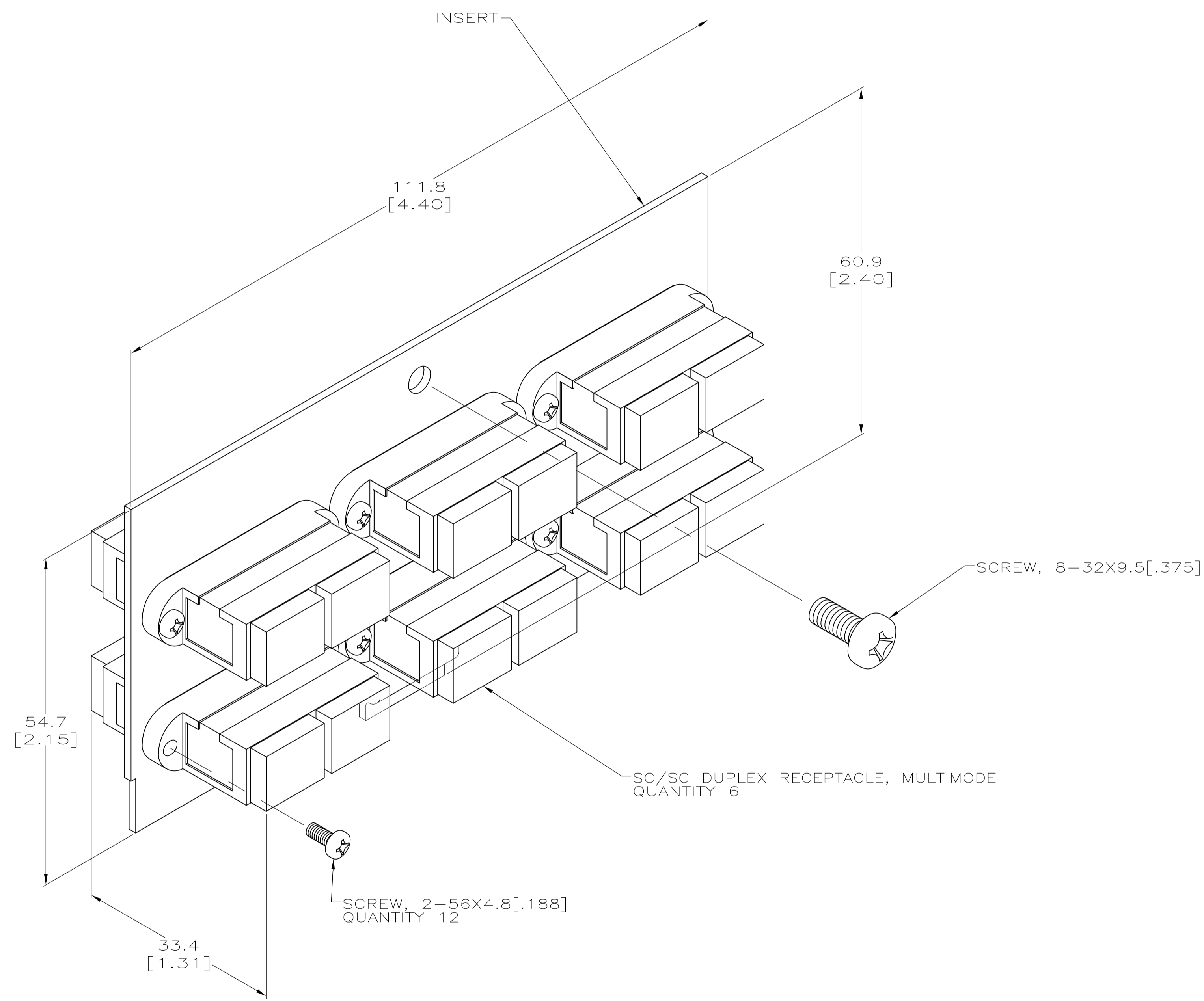


LOC	DIST	REVISIONS				
		REV	DESCRIPTION	DATE	BY	CHK
HM	00	B	ADDED -2 PER 0B40-0303-01	06NOV01	LH	SH
		C	OBS REV-ECO-08-031689	23FEB09	LH	SH
		D	RE-ACT -1, ADD -3, REV ECO-09-008594	07APR09	LH	SH

- 1 MATERIAL:  
 INSERT - 1.27±.18[.050±.007] THICK  
 PREGALVANIZED G90 CARBON STEEL.  
 DUPLEX RECEPTACLE HOUSING - NORYL N-190X,  
 LT ALMOND (-1), GREEN (-3).
- 2 SCREW, 8-32X9.5[.375], SHIPPED LOOSE.



<b>OBSELETE</b>	GREEN SC-SC	406788-3
	SINGLE MODE	406788-2
	MULTI MODE	406788-1
	DESCRIPTION	PART NO.

THIS DRAWING IS A CONTROLLED DOCUMENT.		DIN: L HALL 06NOV2001 CHK: L SMITH 06NOV01 APVD: S HERNDON 06NOV01 PRODUCT SPEC: -- APPLICATION SPEC: -- WEIGHT: --	Tyco Electronics Corporation Harrisburg, PA 17105-3608 NAME: MODULE ASSEMBLY, SC/SC DUPLEX FIBER, CONSOLIDATION POINT SIZE: A1 CAGE CODE: 00779 DRAWING NO: 406788 RESTRICTED TO: --
DIMENSIONS: mm [INCHES] 0. PLC ± - 1. PLC ± 0.25[.01] 2. PLC ± - 3. PLC ± - 4. PLC ± - ANGLES ± -	TOLERANCES UNLESS OTHERWISE SPECIFIED: 0. PLC ± - 1. PLC ± 0.25[.01] 2. PLC ± - 3. PLC ± - 4. PLC ± - ANGLES ± -	MATERIAL:  FINISH: - CUSTOMER DRAWING: -- SCALE: 2:1 SHEET: 1 of 1 REV: D	Tyco Electronics Tyco Electronics Corporation Harrisburg, PA 17105-3608 NAME: MODULE ASSEMBLY, SC/SC DUPLEX FIBER, CONSOLIDATION POINT SIZE: A1 CAGE CODE: 00779 DRAWING NO: 406788 RESTRICTED TO: -- CUSTOMER DRAWING: -- SCALE: 2:1 SHEET: 1 of 1 REV: D