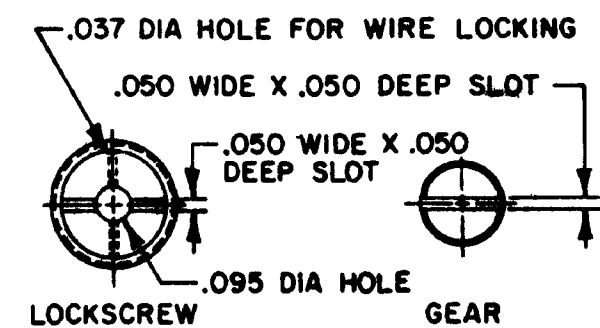


HONEYWELL
PART NUMBER

35EN23-4

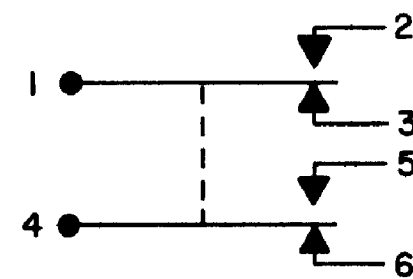
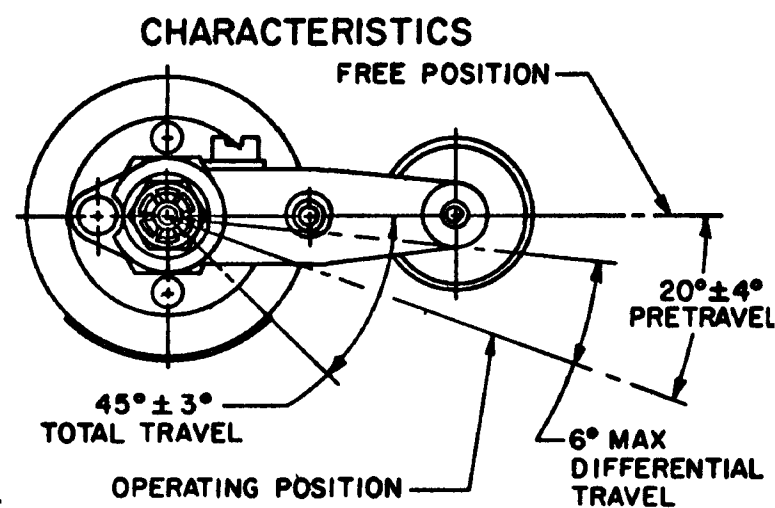
FAA-PMA 

REV	DOCUMENT	CHANGED BY	CHECK
11	0006858	CVS 04AUG04	AK

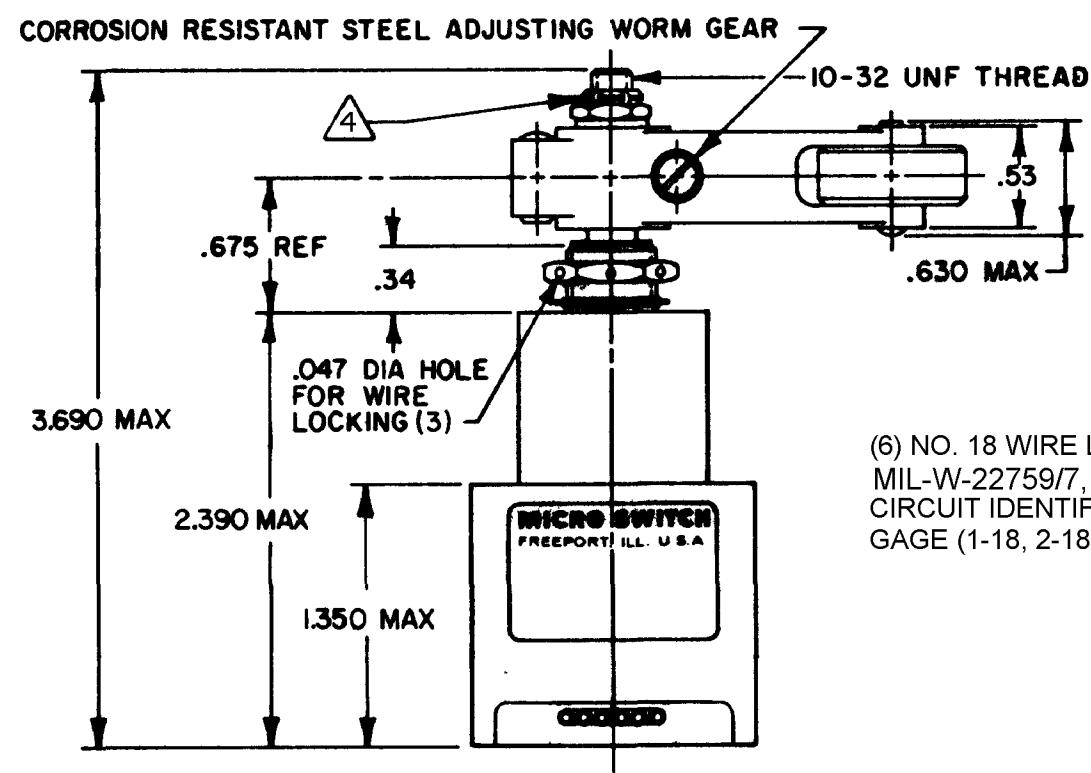
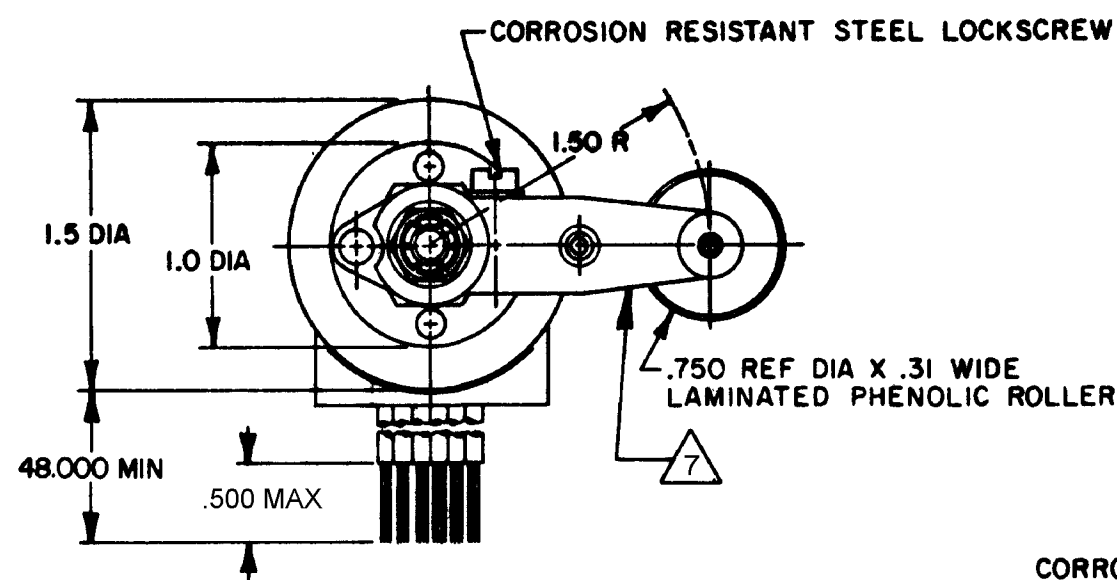


ROLLER LEVER MAY BE ADJUSTED FOR AN INFINITE NUMBER OF POSITIONS THRU 360°. ADJUSTMENT IS MADE BY LOOSENING THE LOCK NUT AND THEN THE LOCKSCREW AND TURNING GEAR UNTIL LEVER IS IN DESIRED POSITION. LOCKSCREW AND LOCK NUT ON SHAFT IS THEN TIGHTENED TO POSITIVELY LOCK LEVER IN POSITION.

LEVER ADJUSTMENT DETAIL
SCALE 2 TO 1




CIRCUIT DIAGRAM

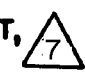


CORROSION RESISTANT STEEL LOCKING NUT, 
.37 ACROSS FLATS (MS 21083-C5)

CORROSION RESISTANT STEEL
SHAFT, BUSHING AND PINS

CORROSION RESISTANT STEEL
WASHER, .438 DIA X .032
THICK (AN960-C10L) 

15/32-32 UNS THREAD TO
WITHIN .062 OF SHOULDER

CORROSION RESISTANT STEEL HEX NUT, 
.62 ACROSS FLATS X .125 THICK


CORROSION RESISTANT STEEL INTERNAL TOOTH
LOCKWASHER, .60 DIA X .018 REF THICK (MS 35333-136) 

.140 DIA X .062 HIGH PINS (2) LOCATED ON
.765 DIA CENTER

(6) NO. 18 WIRE LEAD PER
MIL-W-22759/7, MARKED WITH
CIRCUIT IDENTIFICATION AND WIRE
GAGE (1-18, 2-18, ETC) PER MIL-W-5088

NOTES

- 1 CORROSION RESISTANT STEEL ENCLOSURE
- 2 SWITCH SEALED PER MIL-PRF-8805 SYMBOL 4
- 3 CIRCUIT DIAGRAM, CATALOG LISTING, DATE CODE, FED. MFG. CODE
AND FAA-PMA ARE SHOWN ON NAMEPLATE
- 4 DO NOT APPLY MORE THAN 20-25 INCH-POUNDS OF TORQUE
WHEN TIGHTENING LOCKING NUT
- 5 SHAFT SEAL MATERIAL E.P. RUBBER
- 6 BASIC SWITCHES HAVE BIFURCATED GOLD CONTACTS
- 7 HARDWARE MAY BE PACKAGED UNASSEMBLED PER MIL-PRF-8805
- 8 TOTAL TRAVEL OF ROLLER LEVER IS 45° ± 3° IN CLOCKWISE
DIRECTION ONLY, WITH SPRING RETURN TO NEUTRAL
- 9 FOR MANUFACTURING DETAIL SEE ASSEMBLY DRAWING 35EN23-4 FOR FAA-PMA

CHARACTERISTICS	ELECTRICAL DATA	
OPERATING TORQUE - - - - - 12-25 IN LB	CONTACT ARRANGEMENT SEE CIRCUIT DIAGRAM	
RELEASE TORQUE 9 IN LB MIN (AS ADJUSTED) 4 IN LB MIN (AFTER 25,000 OPERATIONS)	28 VDC 	
PRETRAVEL	LOAD	SEA LEVEL 50,000 FT.
DIFFERENTIAL TRAVEL	RES	1.0 1.0
OVERTRAVEL	IND	0.5 0.5
FREE POSITION	MOTOR	
	LAMP	

SEE DETAIL

DESIGN UNITS: INCH	DRAWN	RJH	2MAY80
TOLERANCES UNLESS NOTED:	CHECK	GLH	6MAY80
NO PLACE X ± 0.040	THIS DRAWING COVERS A PROPRIETARY ITEM AND IS THE PROPERTY OF HONEYWELL. THIS DRAWING IS NOT TO BE COPIED OR USED WITHOUT THE PERMISSION OF HONEYWELL.		
ONE PLACE .X ± 0.030			
TWO PLACE .XX ± 0.015			
THREE PLACE .XXX ± 0.005			
FOUR PLACE .XXXX ± 0.0005			
ANGLES ± 2	INTERPRET PER ASME Y14.5M-1994 OTHER HONEYWELL ENGINEERING STANDARDS MAY APPLY		
THIRD ANGLE PROJECTION	RASTER		

Honeywell

TITLE
SWITCH - ENCLOSED

SIZE	TYPE	DRAWING NAME	REV
C	I	35EN23-4	11
SCALE	FULL	WEIGHT 14.9 OZ MAX	SHEET 1 OF 1