

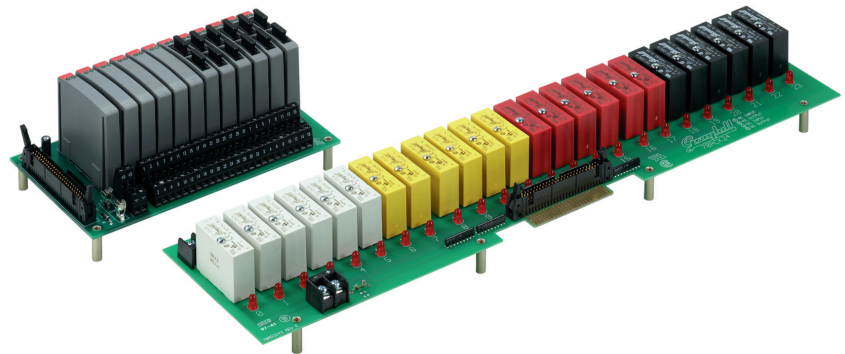
RACKS

24 Channel (In-Line)



FEATURES

- For use with System 50 Style Controllers
- Available for Standard, Miniature, G5 and OpenLine® Modules
- UL, CSA Certified

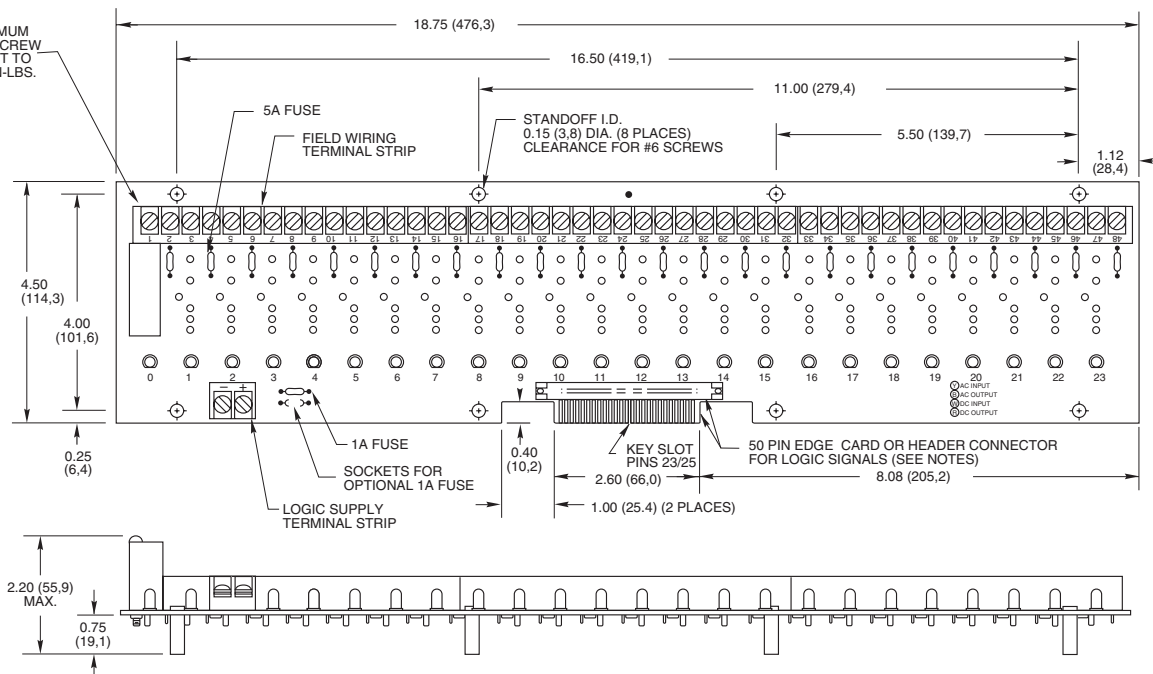


24 CHANNEL RACK: Standard

Part No. 70RCK24

Dimensions are shown in inches (and millimeters).
Tolerances are ± 0.010 (0,25) unless indicated otherwise.

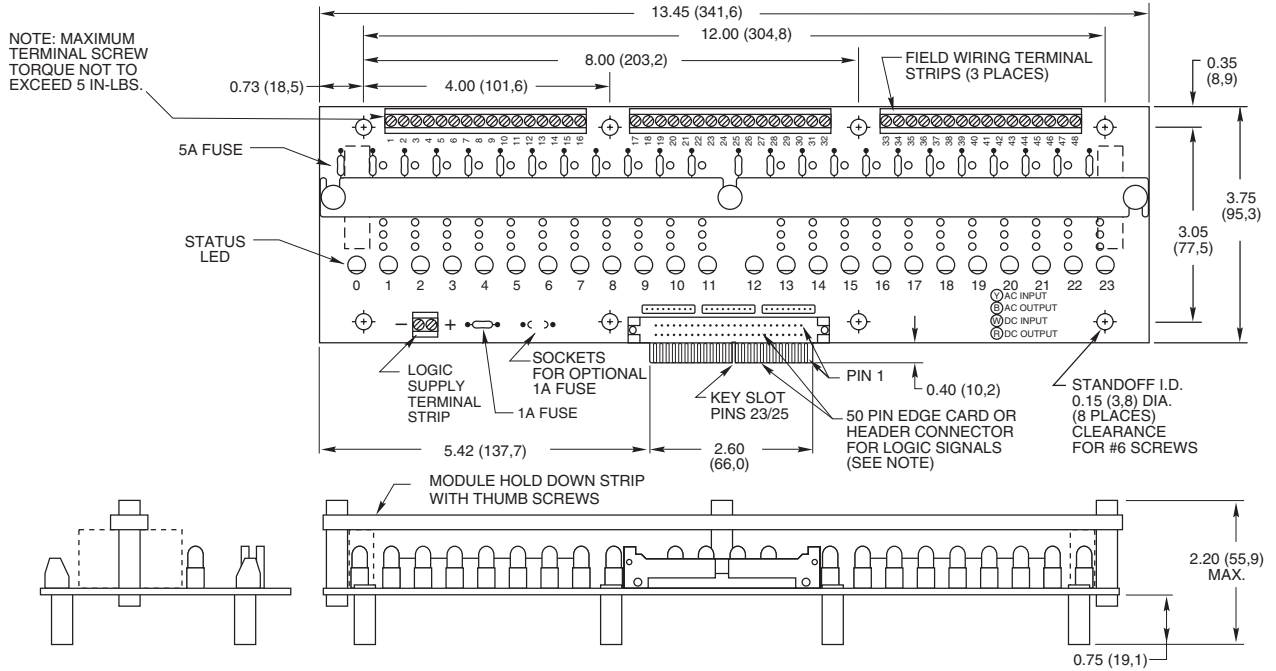
NOTE: MAXIMUM TERMINAL SCREW TORQUE NOT TO EXCEED 5 IN-LBS.



24 CHANNEL RACK: Miniature

Part No. 70MRCK24

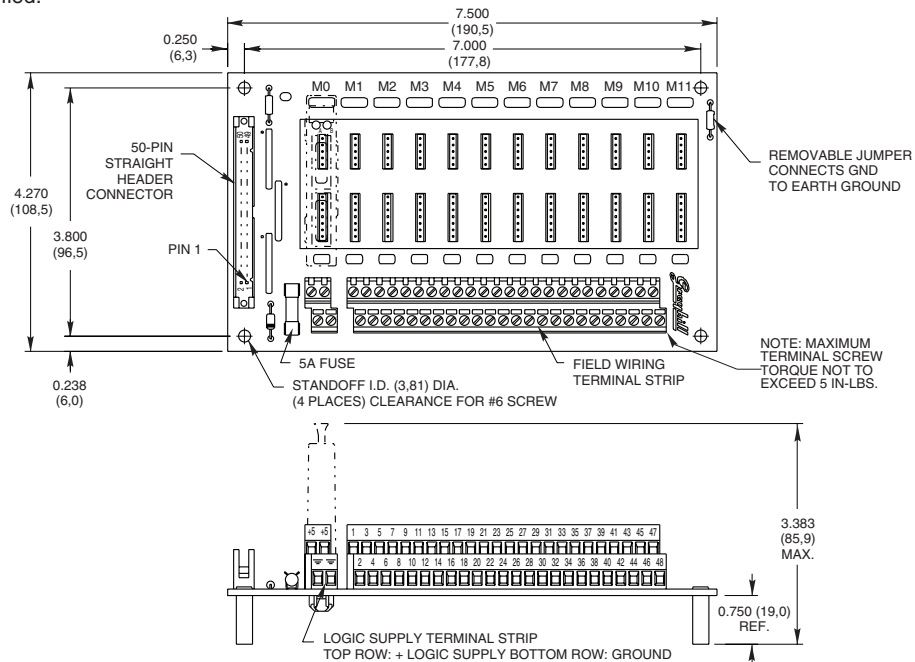
Dimensions are shown in inches (and millimeters).
All tolerances are ± 0.010 (0,25) unless otherwise specified.



24 CHANNEL RACK: OpenLine®

Part No. 70LRCK24

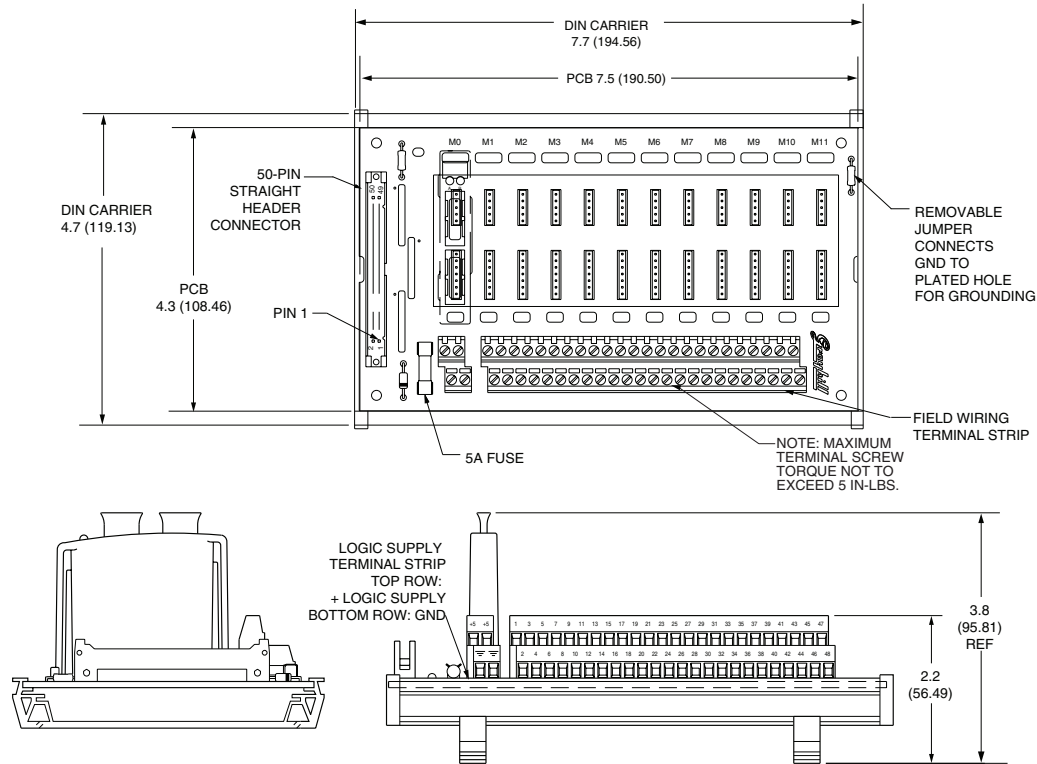
Dimensions are shown in inches (and millimeters).
All tolerances are ± 0.010 (0,25) unless otherwise specified.



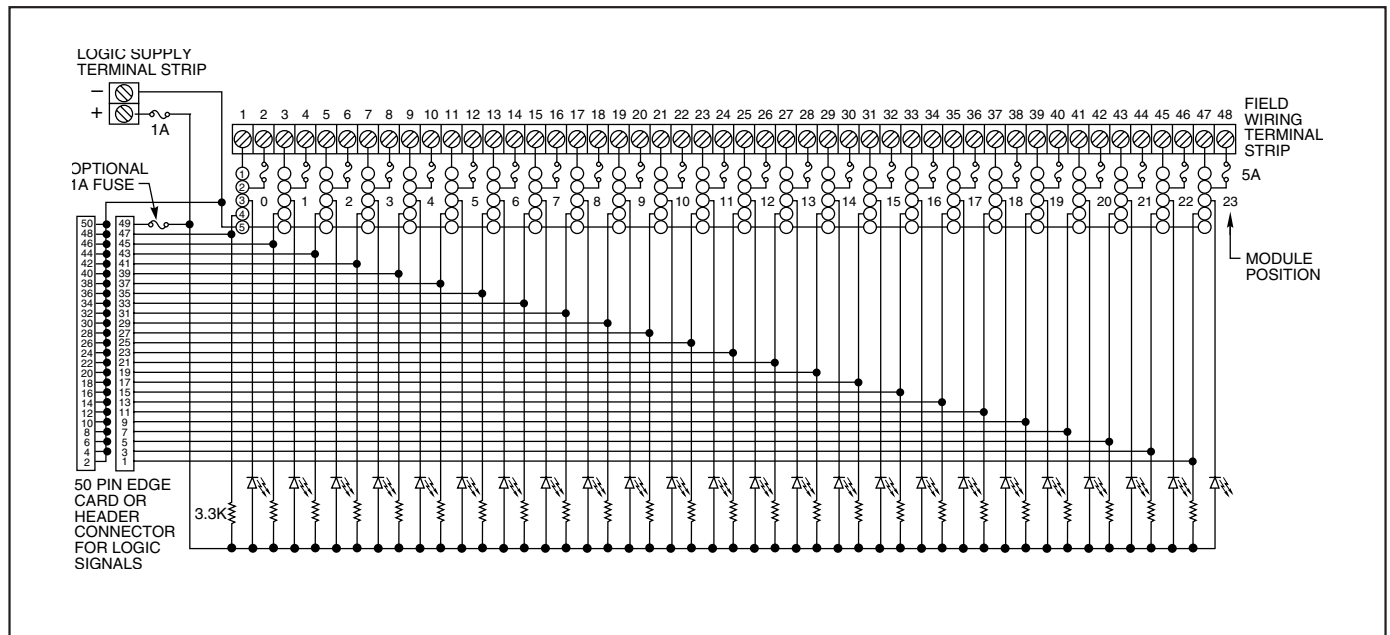
24 CHANNEL RACK: OpenLine® DIN Rail Mount for System 50

Part No. 70LRCK24-DIN

Dimensions are shown in inches (and millimeters).
All tolerances are ± 0.010 (0,25) unless otherwise specified.

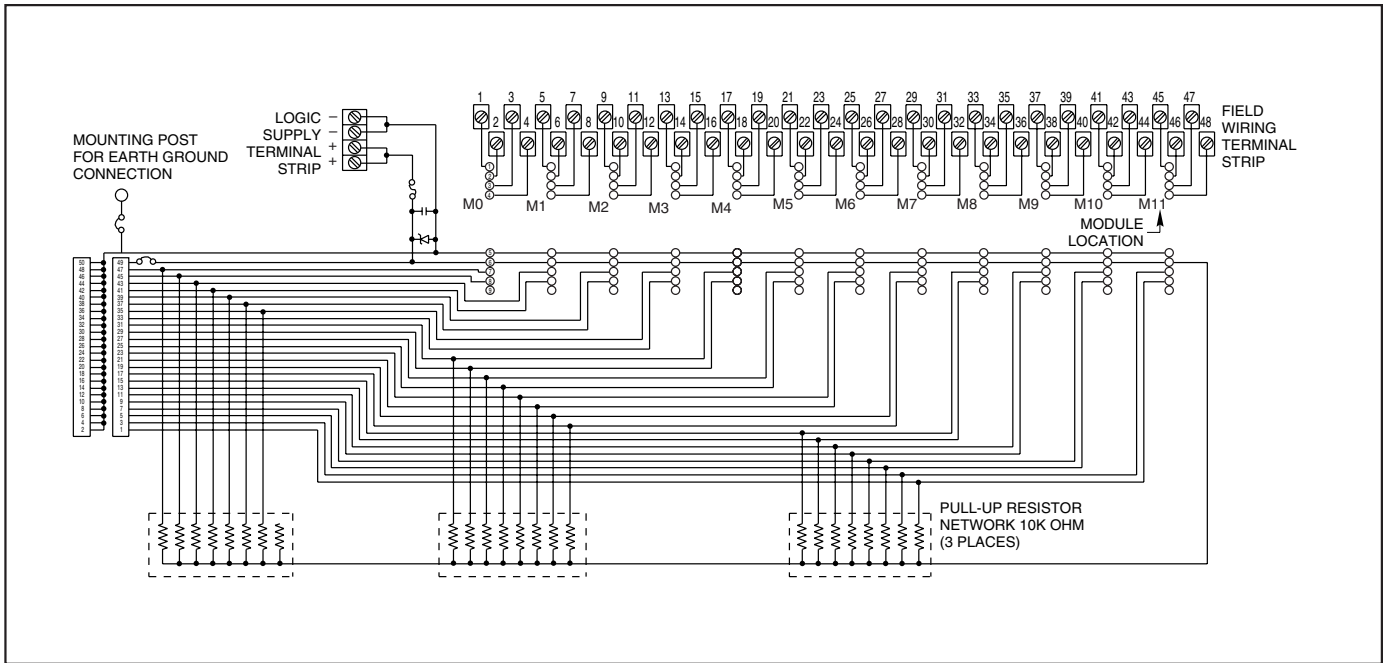


SCHEMATIC: Part Nos. 70RCK24 and 70MRCK24



System 50

SCHEMATIC: Part No. 70LRCK24



ORDERING INFORMATION (modules ordered separately)

Part Number	I/O	Description	UL	CSA	Style
70RCK24	24	Card edge	X	X	Standard
70RCK24-HL	24	50-pin header with ejector levers	X	X	Standard
70MRCK24-EC	24	Card edge	X	X	Mini
70MRCK24-HL	24	50-pin header with ejector levers	X	X	Mini
70LRCK24-HL	24	50-pin header with ejector levers	X	X	OpenLine®
70LRCK24-DIN	24	50-pin header, DIN rail mount	X	X	OpenLine®

Available from your local Grayhill Distributor. For prices and discounts, contact a local Sales Office, an authorized local Distributor, or Grayhill.