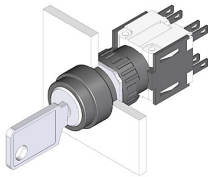


EAO – Your Expert Partner for Human Machine Interfaces

51-374.F22D - Keylock switch 3 positions

51-374.F22D - Keylock switch 3 positions



Attention: The preview is based on a sample product. This can differ from your current configuration.

Mounting

Mounting cut-out Ø 16 mm
Design raised

Front

Front dimension Ø 18 mm
Front shape round

Other Attributes

Weight 0,025 kg

Operating-/Indication part

Switching angle

IP-Rating

Front protection IP65

Connection Method

Terminal Solder 2.8 x 0.5 mm

Actuator

Switching action Momentary - Rest(a) - Momentary

Switching element

Rotary positions 3
Switching system Snap-action switching element
Switching current 5 A
Contacts 2 NC + 2 NO
Contact material
Switching voltage 250 V AC

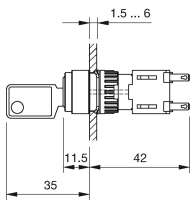
Function

Keylock switch

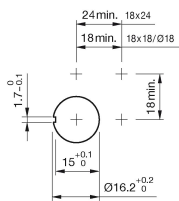
EAO – Your Expert Partner for Human Machine Interfaces

51-374.F22D - Keylock switch 3 positions

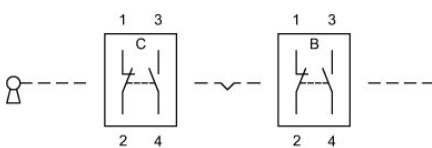
Dimensions



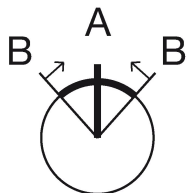
Mounting cut-outs



Wiring diagram



Switching positions



Additional information

Standard lock: DOM 311

Two keys are supplied with each key lock switch

Optional lock numbers on request

Legend

Contacts: NC = Normally closed, NO = Normally open

Switching action: A = Rest, B = Momentary