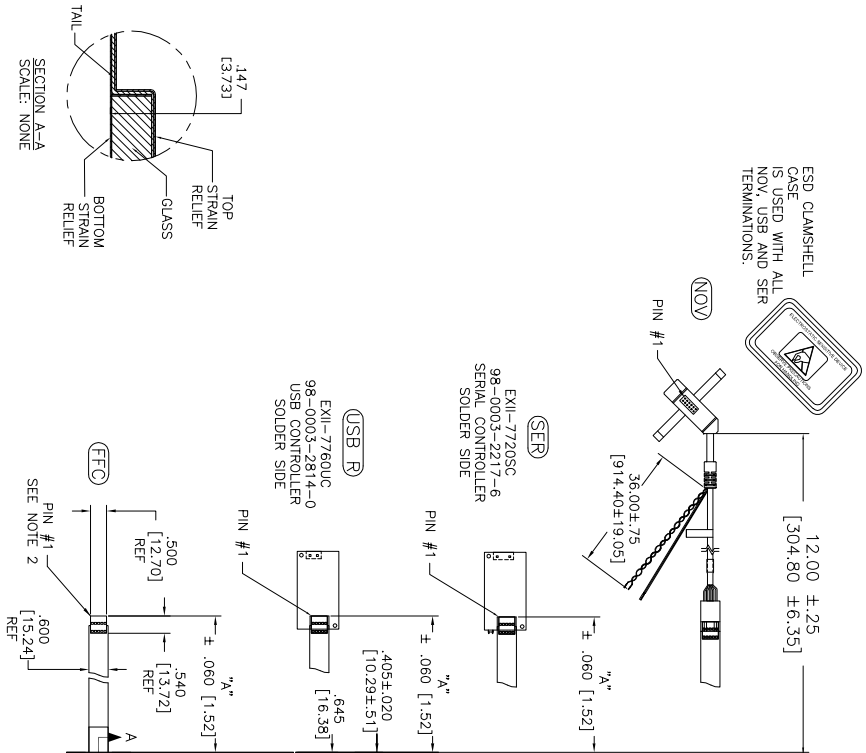
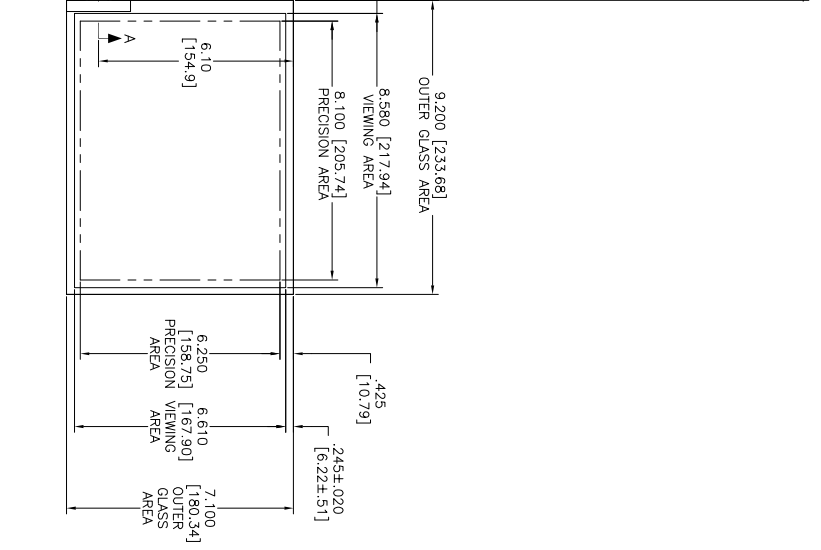


OGA DIAGONAL: 11.62 [295.18]
 VA DIAGONAL: 10.84 [275.46]
 PA DIAGONAL: 10.25 [260.26]

ESD CLAMSHELL
 CASE IS USED WITH ALL
 NOV, USB AND SER
 TERMINATIONS.



.147±.020 [3.73±.51]
 TOTAL THICKNESS
 OF GLASS, CABLE
 AND STRAIN RELIEF



TOP LEVEL NUMBER	US NUMBER	TYPE	DM # (TOTAL GLASS TO CONNECTOR)	A/G FINISH	PROD SPEC
17-8021-203	98-0003-2503-9	FCC	4.27" [108.46]	AG500	23655
17-8021-205	98-0003-2504-7	FCC	8.00" [203.20]	AG500	23655
17-8021-206	98-0003-2505-4	NOV	SEE DWG	AG500	23655
17-8021-221	98-0003-2507-0	SFR	4.27" [108.46]	AG500	23655
17-8021-227	98-0003-2510-4	SFR	8.00" [203.20]	AG500	23655
17-8021-218	98-0003-2916-3	USB R	4.27" [108.46]	AG500	23655
17-8021-226	98-0003-2509-6	USB R	8.00" [203.20]	AG500	23655

- NOTES:
- WEIGHT OF GLASS IN GRAMS: 321±10%
 - NICOMATIC HOUSING P/N: 0L05
 NICOMATIC RECEPTACLES (PINS) MATTE TIN PLATED P/N: 14106-12
 HOUSING ORIENTED WITH LATCH DOWN

PINOUT
1 LR
2 LL
3 SHIELD
4 UL
5 UR

UNITS INCHES [MM]

TOLERANCES UNLESS OTHERWISE SPECIFIED

X ±.03 [.76]
 .XX ±.015 [.38]
 .XXX ±.01 [.25]
 ANGLES ±1°

3M TOUCH SYSTEMS
 3M TOUCH SYSTEMS
 3M TOUCH SYSTEMS
 3M TOUCH SYSTEMS
 3M TOUCH SYSTEMS

©COPYRIGHT 2005
 THIS DOCUMENT IS THE UNPUBLISHED AND UNPATENTED PROPERTY OF THE 3M TOUCH SYSTEMS COMPANY. NO PART OF THIS DOCUMENT IS TO BE REPRODUCED OR TRANSMITTED IN ANY FORM OR BY ANY MEANS, ELECTRONIC OR MECHANICAL, WITHOUT THE WRITTEN PERMISSION OF 3M TOUCH SYSTEMS COMPANY.

REV	DATE	BY	CHK	APP	DESCRIPTION
H	4/13	SB			REVISED PER CO 036256
G	9/11	SEB			REVISED PER CO 033533
F	8/11	SB			REVISED PER CO 033455

MARKETING DRAWING
 SCT32NN 10.84"

DMW K. CROWLEY 9/05

DO NOT SCALE DRAWING

SCALE 1 = 1

REV H

DOC NO 28209-MKT

SHEET 1 OF 1