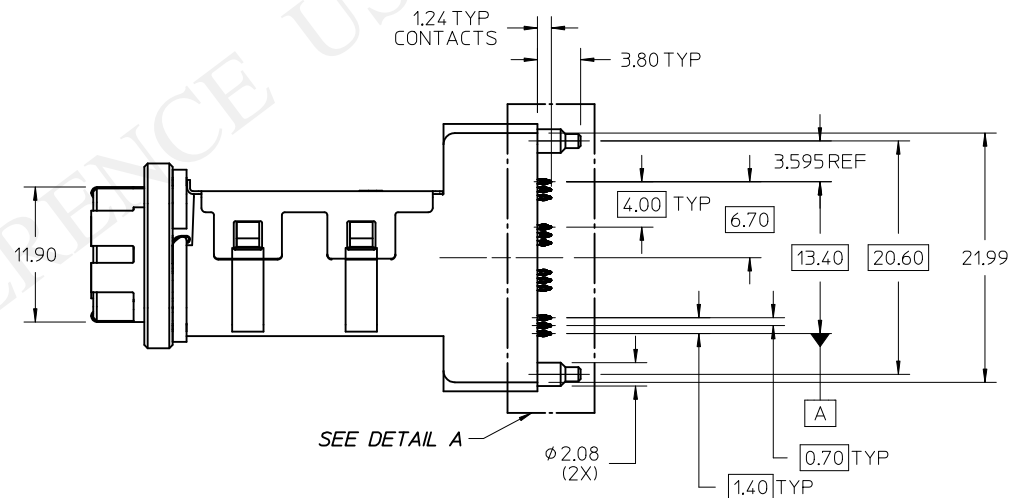
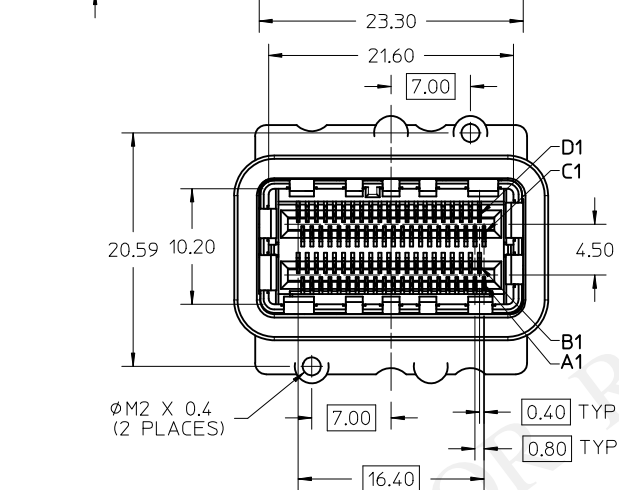
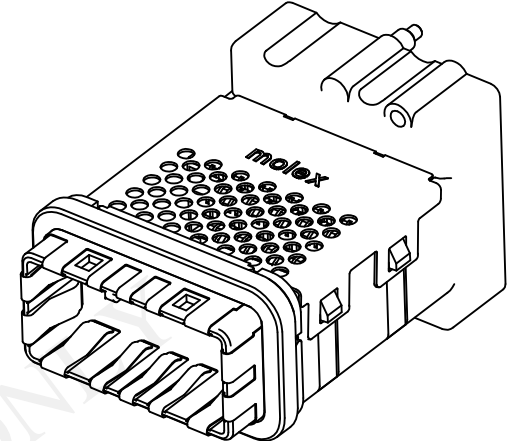
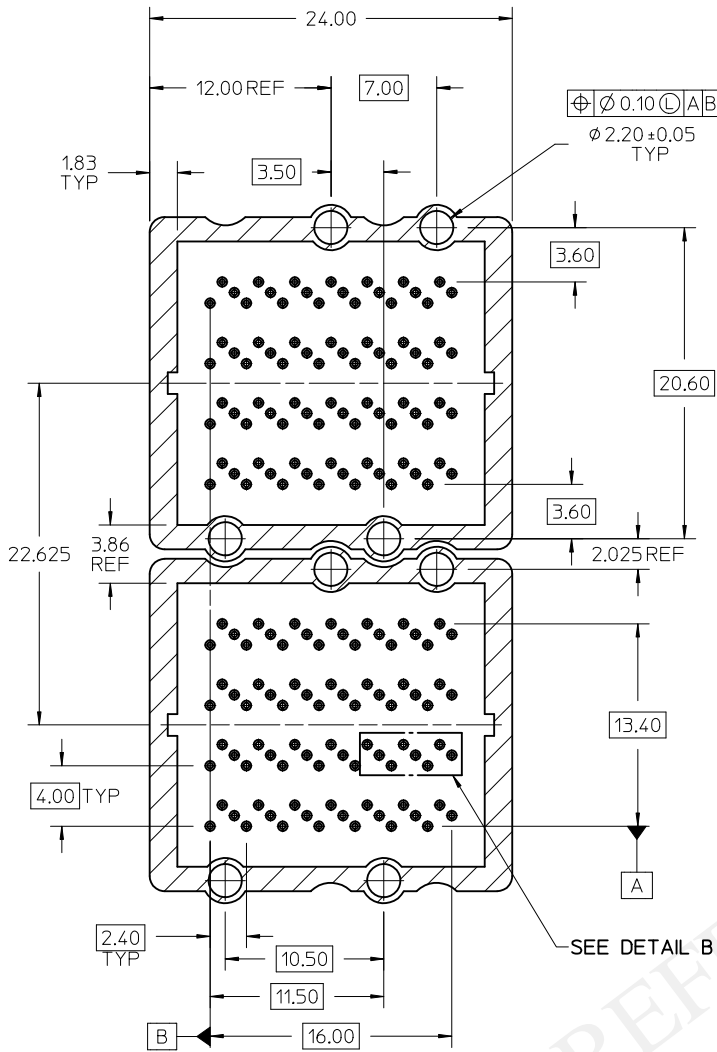


DETAIL A
SCALE 4:1

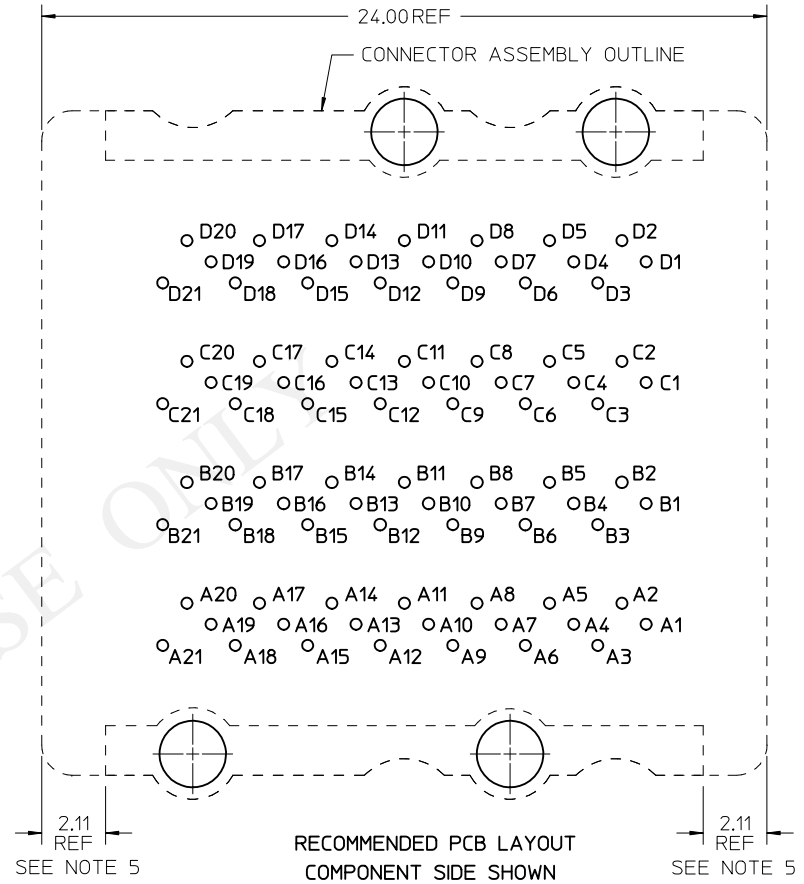


- NOTES:
- MATERIALS:**
CONNECTOR HOUSING: HIGH TEMPERATURE THERMOPLASTIC GLASS-FILLED, UL 94V-0
EMI HOUSING: NICKEL PLATED DIE CAST ALLOY
COVER: STAINLESS STEEL ALLOY
EMI GASKET: CONDUCTIVE POLYMER
TERMINALS: COPPER ALLOY
 - PLATING:**
769970022 - CONTACT AREA: 0.764mm MIN. GOLD OVER 2.544mm MIN. NICKEL
TIN TAIL AREA: 0.764mm - 1.524mm TIN OVER 2.544mm MIN NICKEL
 - THIS CONNECTOR IS DESIGNED TO MATE WITH MOLEX IPASS CABLES.
 - PACKAGING SPECIFICATION: TRAY PACK PER PK-76997-001.
 - MOUNTING HARDWARE REQUIRED: M2x0.4 CAP SCREWS (4), SEE SHEET 3
 - PRODUCT SPECIFICATION: PS-76997-001.
 - APPLICATION SPECIFICATION: AS-76997-001.

RELEASE TO "A" EC NO: UCP2013-3343 DRAWING PRATT 2012/10/17 CHKD: MBANAKIS 2013/02/07 APPR: MBANAKIS 2013/02/13	QUALITY SYMBOLS ▽=0 ▽=0 ▽=0	GENERAL TOLERANCES (UNLESS SPECIFIED)		DIMENSION STYLE MM ONLY		SCALE 3:1	DESIGN UNITS METRIC	THIRD ANGLE PROJECTION		
		4 PLACES ± --- ± ---	3 PLACES ± --- ± ---	2 PLACES ± 0.25 ± ---	1 PLACE ± --- ± ---	0 PLACE ± --- ± ---	DRAWN BY GPRATT	DATE 2013/02/07	CHECKED BY MBANAKIS	DATE 2013/02/07
REV A	DESCRIPTION	ANGULAR ±1/2°		DRAFT WHERE APPLICABLE MUST REMAIN WITHIN DIMENSIONS		APPROVED BY MBANAKIS	DATE 2013/02/13	MATERIAL NO. SEE CHART		
MATERIAL NUMBER 769970242							TAIL PLATING TIN		VERTICAL CXP ASSEMBLY HIGH SPEED CHANNEL 0.8MM I/O	
DOCUMENT NO. SD-76997-242							SHEET NO. 1 OF 3		THIS DRAWING CONTAINS INFORMATION THAT IS PROPRIETARY TO MOLEX. INCORPORATED AND SHOULD NOT BE USED WITHOUT WRITTEN PERMISSION	

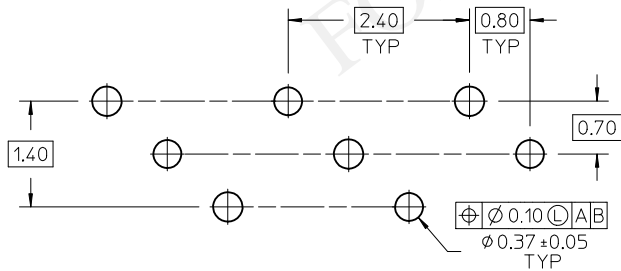


RECOMMENDED PCB LAYOUT
 COMPONENT SIDE SHOWN
 MULTIPLE APPLICATION SHOWN
 ON MINIMUM PITCH
 PCB THICKNESS: 1.57mm MIN.



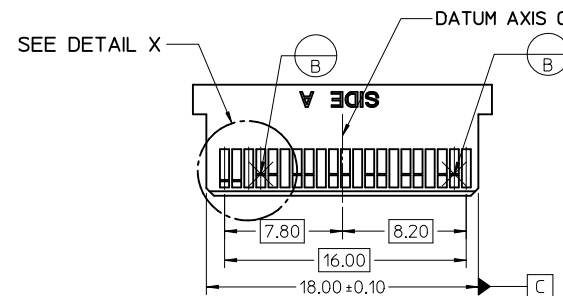
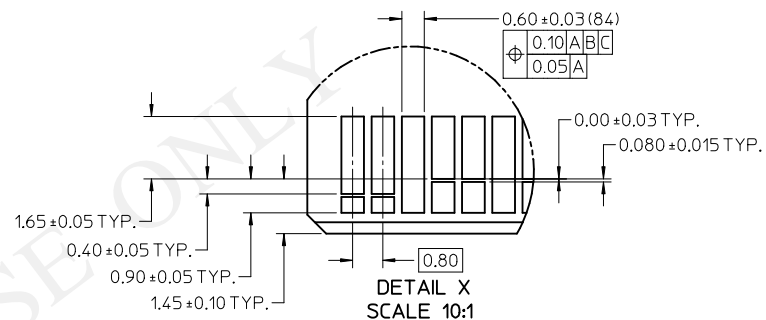
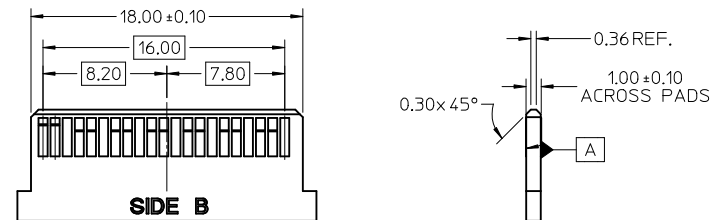
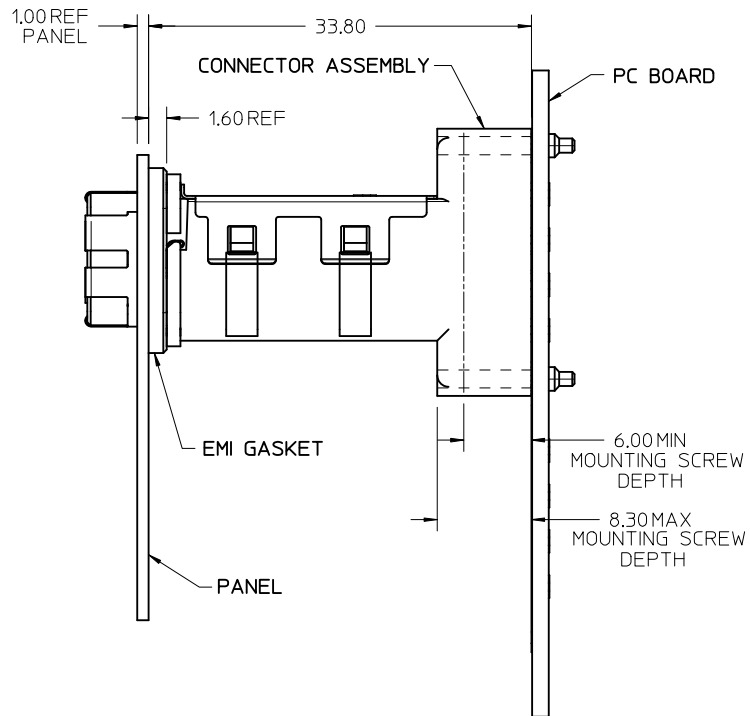
NOTES:

- CROSS-HATCHED AREA TO BE CONDUCTIVE ON THE PCB.
- CROSS-HATCHED AREA MUST BE INCORPORATED IN THE FLAT ROCK PRESS-FIT TOOLING.
- REFER TO THE PLATING DETAIL OF THE COMPLIANT PIN HOLES IN THE APPLICATION SPEC AS-76997-002 FOR THE DRILL SIZE AND ANNULAR RING FOR THE 0.37 \varnothing FINISHED HOLE.
- DIE CAST RECEIVED 1.5MM IN THIS AREA.



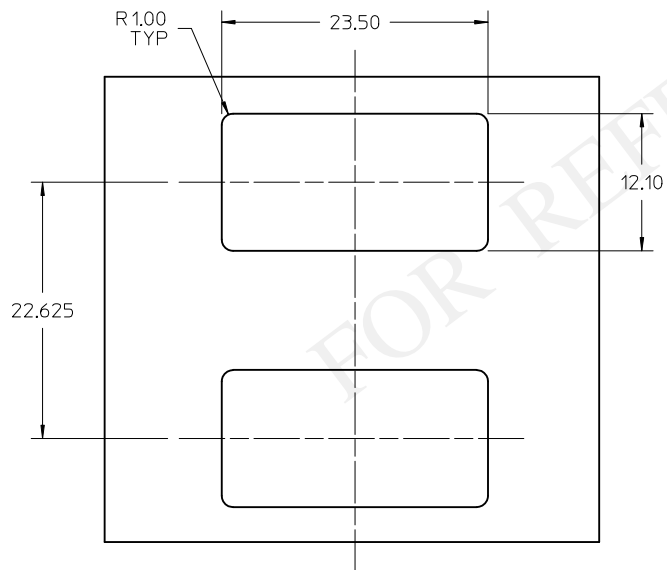
DETAIL B
 (TYPICAL ROW LAYOUT)

SEE SHEET 1 EC NO: UCP2013-3343 DRAWN: GPRATT 2012/10/17 CHKD: MBANAKIS 2013/02/07 APPR: MBANAKIS 2013/02/13	QUALITY SYMBOLS ▽=0 ▽=0 ▽=0	GENERAL TOLERANCES (UNLESS SPECIFIED)		DIMENSION STYLE MM ONLY		SCALE 4:1	DESIGN UNITS METRIC	THIRD ANGLE PROJECTION		
		mm	INCH	DRAWN BY GPRATT	DATE 2013/02/07	TITLE VERTICAL CXP ASSEMBLY HIGH SPEED CHANNEL 0.8MM I/O				
A	DESCRIPTION REV	4 PLACES	± ---	± ---	CHECKED BY MBANAKIS	DATE 2013/02/07	DOCUMENT NO. SD-76997-242			
		3 PLACES	± ---	± ---	APPROVED BY MBANAKIS	DATE 2013/02/13				
		2 PLACES	± 0.25	± ---	SHEET NO. 2 OF 3					
		1 PLACE	± ---	± ---						
		0 PLACE	± ---	± ---	THIS DRAWING CONTAINS INFORMATION THAT IS PROPRIETARY TO MOLEX INCORPORATED AND SHOULD NOT BE USED WITHOUT WRITTEN PERMISSION					
		ANGULAR ±1/2°		SEE SHEET 1						



- NOTES:
- 0.03 MINIMUM KEEP OUT FOR SOLDER MASK AROUND ALL PADS
 - DATUM B TARGETS ARE DEFINED BY THE RESPECTIVE PAD CENTER LINES AND THE LEADING EDGE OF THE TARGET PADS

RECOMMENDED PADDLE CARD LAYOUT



I/O PANEL CUT-OUT

SEE SHEET 1 EC NO: UCP2013-3343 DRAWN: GPRATT 2012/10/17 CHKD: MBANAKIS 2013/02/07 APPR: MBANAKIS 2013/02/13	QUALITY SYMBOLS ▽=0 ▽=0 ▽=0	GENERAL TOLERANCES (UNLESS SPECIFIED)		DIMENSION STYLE MM ONLY		SCALE 3:1	DESIGN UNITS METRIC	THIRD ANGLE PROJECTION	
		mm	INCH	DRAWN BY GPRATT	DATE 2013/02/07	TITLE VERTICAL CXP ASSEMBLY HIGH SPEED CHANNEL 0.8MM I/O	DOCUMENT NO. SD-76997-242		SHEET NO. 3 OF 3
A	REVISION	DRAFT WHERE APPLICABLE MUST REMAIN WITHIN DIMENSIONS		MATERIAL NO. SEE SHEET 1		MATERIAL NO. SD-76997-242		THIS DRAWING CONTAINS INFORMATION THAT IS PROPRIETARY TO MOLEX INCORPORATED AND SHOULD NOT BE USED WITHOUT WRITTEN PERMISSION	