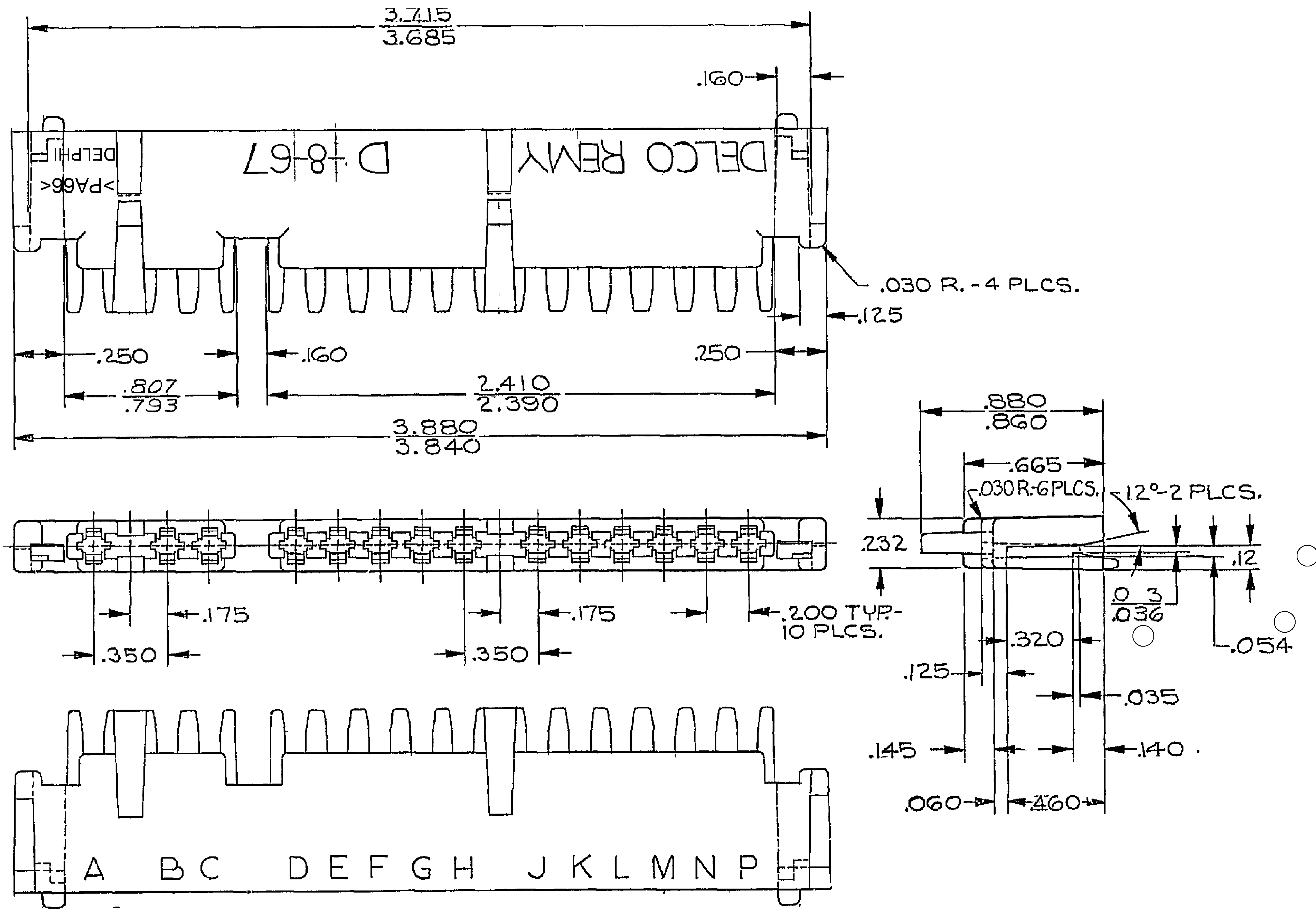


DWG STATUS				REVISION HISTORY				AUTH		DR		AP/VD	
DATE	STG	REV	W/P	CHG	ZONE								
08M103	R	11	AA	-		CLEARED REV COL & ADDED TOLERANCE CHART	240887	RAD	CMZ	60			
01FE06	R	11	AB	-		.12 +/- .005/- .009 WAS .12 +/- .005, .023/.036 WAS .030/.036 AND .054 +/- .005/- .010 WAS .054 +/- .005	277012	RTV	JAA	EST	M		



- NOTES
- REFERENCE MATING COMPONENTS OR EQUIVALENT:
CONNECTOR 06294509 & 06294510
 - (.090)X(.004) RAISED DELPHI CORPORATE BRAND TO BE LOCATED ON ANY EXTERIOR SURFACE, PREFERABLY VISIBLE AT FINAL ASSEMBLY. OPTIONAL CONSTRUCTION TO BE "PED" OR NO LOGO.
 - MATERIAL RECYCLING CODE PER ISO 11469. (.090)X(.004) RAISED CHARACTERS AS SHOWN TO BE LOCATED ON ANY EXTERIOR SURFACE. OPTIONAL CONSTRUCTION TO BE NO MATERIAL RECYCLING CODE.

DWG TYPE		PART DRAWING	
STYLE		DISTR CODE	D
VOLUME 10/11			
UNLESS OTHERWISE SPECIFIED			
THIS DOCUMENT IS IN ACCORDANCE WITH ASME Y14.5M-1994 AS SUPPLEMENTED BY THE IN CHARGE OF REVISIONS AND TOLERANCE AND RELATED DATUM APPLY REFS. FILE # (PERFECT FORM AT MFG DOES NOT IMPLY ANY RELATIONSHIP BETWEEN ACTIVITIES IS ESTABLISHED BY ORIENTATION OR LOCATION TOLERANCES. SEPARATE PARTITION CALLOUTS MAY BE SHOWN SEPARATELY. REGARDLESS OF DATUM REFERENCE. ALL DIMENSIONS ARE IN INCHES.			
REFERENCE			

DELPHI
DELPHI PACKARD ELECTRIC SYSTEMS
WARREN, OH

DR	DATE
APV01 A. RUSSO	270C67
APV02 M. ISOMON	270C67
APV03	270C67
APV04	
APV05	

UNLESS OTHERWISE SPECIFIED
SUBSTANCES OF CONCERN AND RECYCLED CONTENT PER DELPHI 10949001

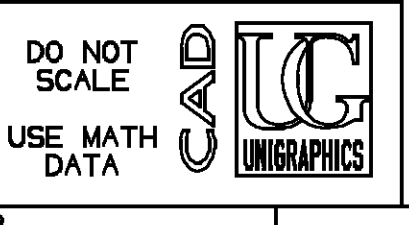
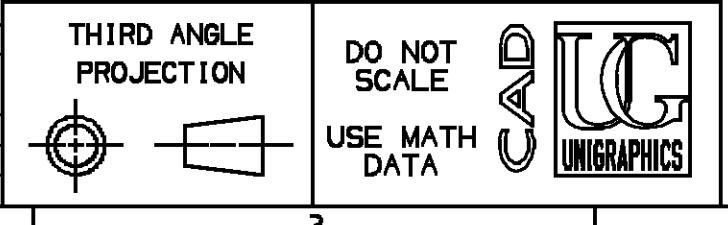
WATERLIL
M3592001 P666 HS 1M BLK

DRAWING NAME
CONN 14 M PAC/ON 1 BLK

DRAWING NUMBER
06294508

SIZE	SCALE	FRAME NO	SHEET NO	STG	REV	W/P
A0	NONE	1	1	1	1	11 AB

DIMENSIONAL RANGE (IN)	CHART	H	
FROM 0	>.750	>1.250	>2.750
TO .750	1.250	2.750	4.000
TOLERANCE UNLESS OTHERWISE SPECIFIED			
1.000	1.000	1.002	1.005
ANGULAR TOLERANCE 24°			



Date: 10-Feb-06 Time: 18:58