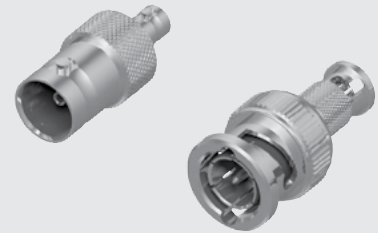
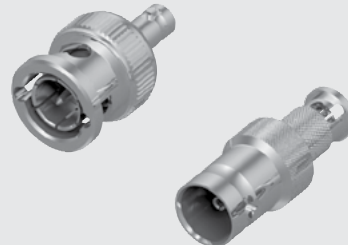


ADP7-04SP2-H4SJ2

ADP7-04SJ2-H4SJ2



ADP7-04SJ2-H4SP2

ADP7-04SP2-H4SP2

**ADP7 SERIES**

# 75 Ω OPTIMIZED ADAPTORS

**Mates with:**  
RFA6T, RFB6T,  
RFB8T, RF179, HDBNC,  
BNC7T, MMCX7, GRF7H-C

**SPECIFICATIONS**

For complete specifications and recommended PCB layouts see [www.samtec.com?ADP7](http://www.samtec.com?ADP7)

**Shell Material:**

Brass

**Contact Material:**

BeCu (Jack)

Brass (Plug to Plug)

**Impedance:**

75 Ω

**Frequency Range:**

3 GHz +

**V.S.W.R.:**

1.2 max (0-3 GHz)

**Working Voltage:**

170 Vrms

**Dielectric Withstanding:**

500 Vrms

**Insulator Resistance:**

5,000 mΩ min.

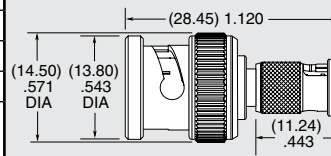
**Operating Temp Range:**

-65 °C to +165 °C

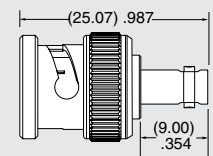
## BNC TO HDBNC

| ADP7 ADAPTOR           | PART NUMBER      |
|------------------------|------------------|
| BNC Jack to HDBNC Jack | ADP7-04SJ2-H4SJ2 |
| BNC Jack to HDBNC Plug | ADP7-04SJ2-H4SP2 |
| BNC Plug to HDBNC Jack | ADP7-04SP2-H4SJ2 |
| BNC Plug to HDBNC Plug | ADP7-04SP2-H4SP2 |

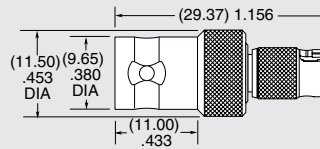
Plating:  
BNC jack/plug =  
30 μ" (0.76 μm) Gold center contact,  
100 μ" (2.54 μm) Nickel outer contact  
HDBNC jack/plug =  
30 μ" (0.76 μm) Gold center contact,  
100 μ" (2.54 μm) Nickel outer contact



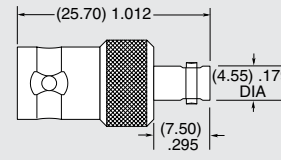
ADP7-04SP2-H4SP2



ADP7-04SP2-H4SJ2



ADP7-04SJ2-H4SP2

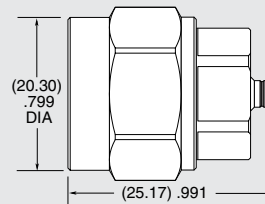


ADP7-04SJ2-H4SJ2

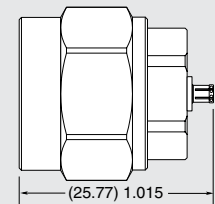
## N TYPE TO MMCX7

| ADP7 ADAPTOR              | PART NUMBER      |
|---------------------------|------------------|
| N Type Jack to MMCX7 Jack | ADP7-76SJ2-7VSJ1 |
| N Type Jack to MMCX7 Plug | ADP7-76SJ2-7VSP1 |
| N Type Plug to MMCX7 Jack | ADP7-76SP2-7VSJ1 |
| N Type Plug to MMCX7 Plug | ADP7-76SP2-7VSP1 |

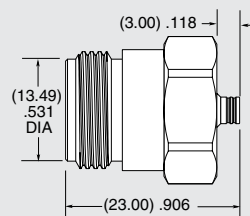
Plating:  
N Type jack/plug =  
30 μ" (0.76 μm) Gold center contact,  
100 μ" (2.54 μm) Nickel outer contact  
MMCX7 jack/plug =  
30 μ" (0.76 μm) Gold center contact,  
Gold flash outer contact



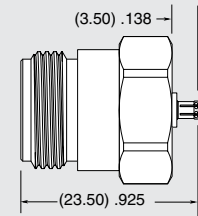
ADP7-76SP2-7VSJ1



ADP7-76SP2-7VSP1



ADP7-76SJ2-7VSJ1



ADP7-76SJ2-7VSP1

**Note:**  
Designed to meet SMPTE  
424M 3G-SDI specifications.

*Due to technical progress, all designs, specifications and components are subject to change without notice.*

**WWW.SAMTEC.COM**

All parts within this catalog are built to Samtec's specifications.  
Customer specific requirements must be approved by Samtec and identified in a Samtec customer-specific drawing to apply.