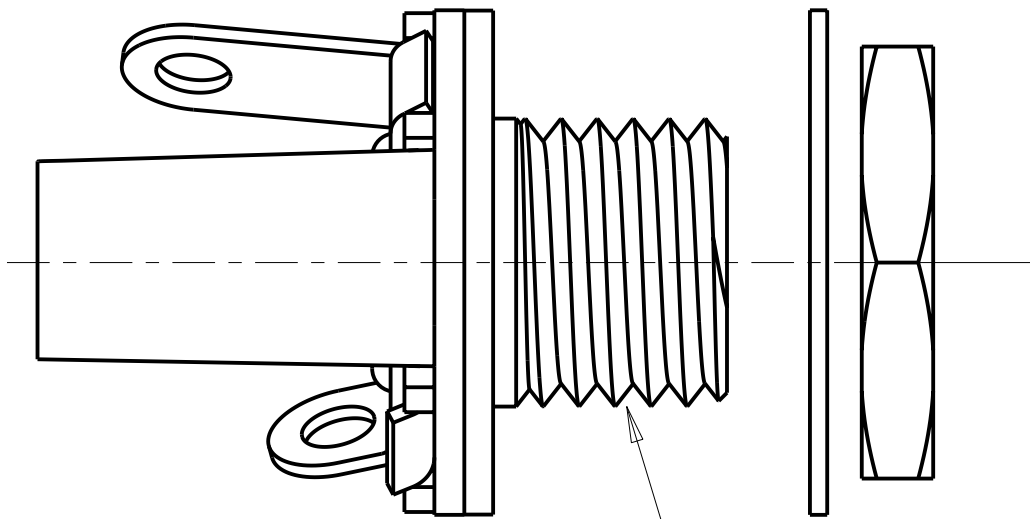
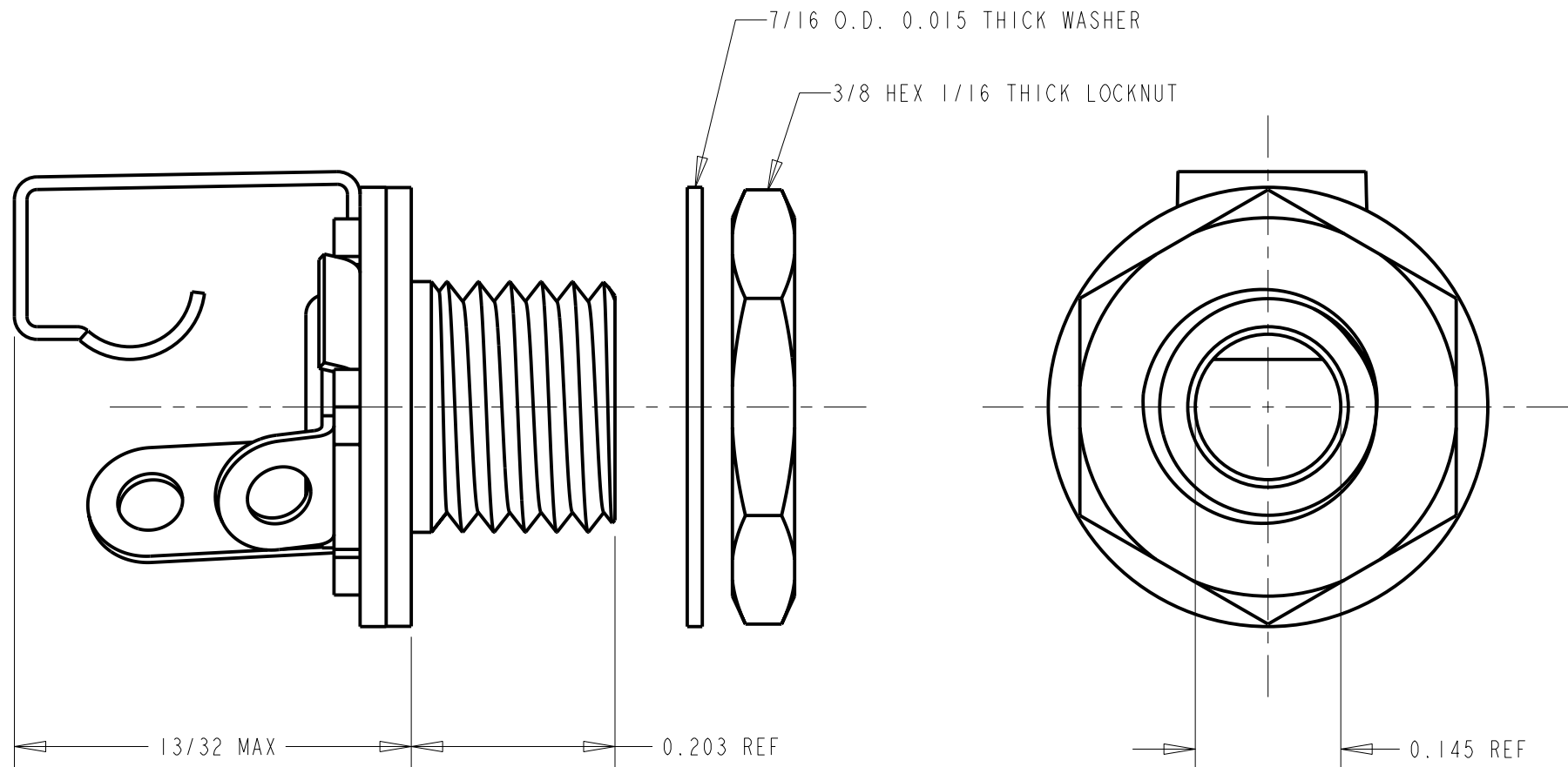
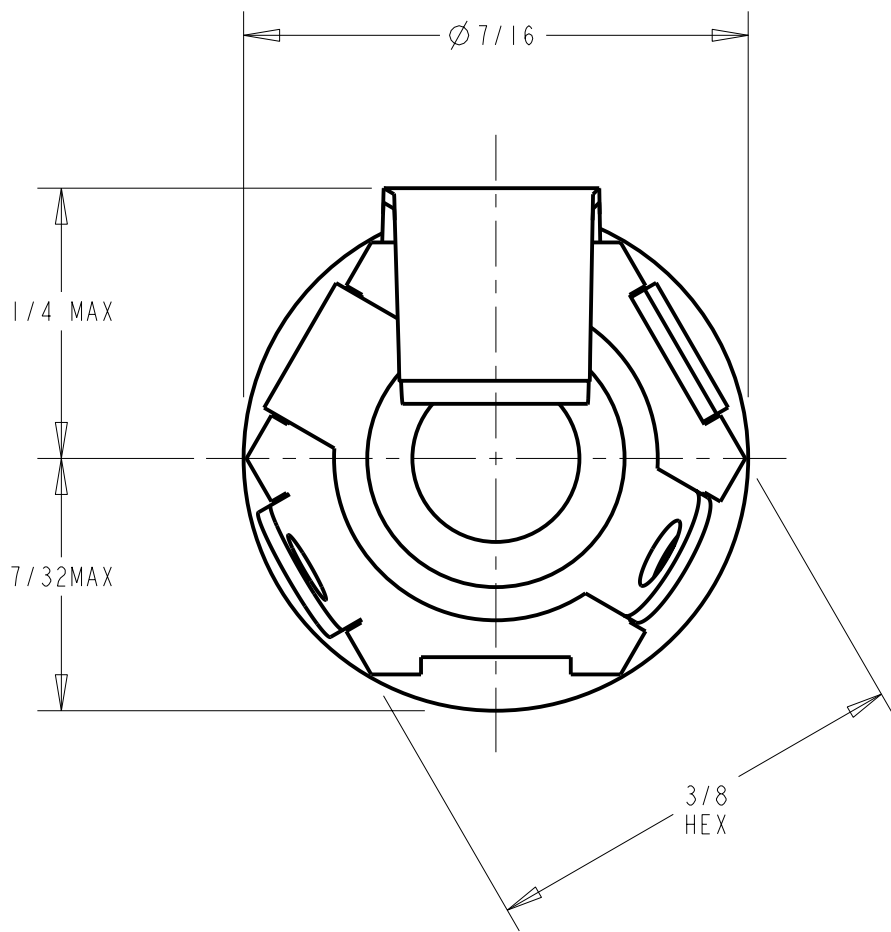


SCALE 4:1

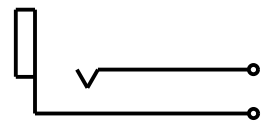


1/4-32 UNEF 2A THREAD REF



SPECIFICATIONS:

- BUSHING - BRASS, NICKEL PLATED
- SPRING - NICKEL SILVER, SPRING TEMPERED
- SPACERS - PAPER BASE BAKELITE
- SLEEVE TERMINAL - BRASS, HOT TINNED
- WASHER - STEEL, NICKEL PLATED
- LOCKNUT - BRASS, NICKEL PLATED



SCHEMATIC CIRCUIT

						<div>★ STAR SYMBOL DENOTES CRITICAL DIMENSION</div>	<div>THIS DRAWING DESCRIBES A DESIGN CONSIDERED PROPRIETARY IN NATURE, DEVELOPED AND MANUFACTURED BY SWITCHCRAFT INC. AND IS RELEASED ON A CONFIDENTIAL BASIS FOR IDENTIFICATION PURPOSES ONLY.</div>						
						<div>UNLESS OTHERWISE SPECIFIED</div>	SIZE	WIDTH	MULT	LBS/M	TEMPER		
						<div>1. ALL DIMENSIONS IN INCHES - TWO PLACE DECIMALS ±0.01 - THREE PLACE DECIMALS ±0.005 - FRACTIONAL DIMENSIONS ±1/64 - ANGLES ±1° - ALL DIA. CONCENTRIC WITHIN 0.005 T.I.R.</div>	FINISH		MATERIAL				
						<div>2. FEATURES ON THE SAME CENTERLINE MUST BE ALIGNED WITHIN ±0.002</div>	SPEC No.		SPEC No.				
						<div>3. REMOVE ALL BURRS</div>	FIRST USED ON		SCALE		<div>Switchcraft®</div>		
							DATE DRAWN	BY	CHKD	APVD			
							4-14-64	TRT	CJD 9-15-64	LG 4-21-64			
C	REDRAWN WAS REV.B ECO #20875	7-15-97	MM	JF			NAME				PART No.	REV	
REV	ECO NUMBER	DATE	BY	APVD			TINI-JAX 2 COND.				4	C	
REVISIONS						DO NOT SCALE DRAWING							

# Mouser Electronics

Authorized Distributor

Click to View Pricing, Inventory, Delivery & Lifecycle Information:

[Switchcraft:](#)

[41](#)