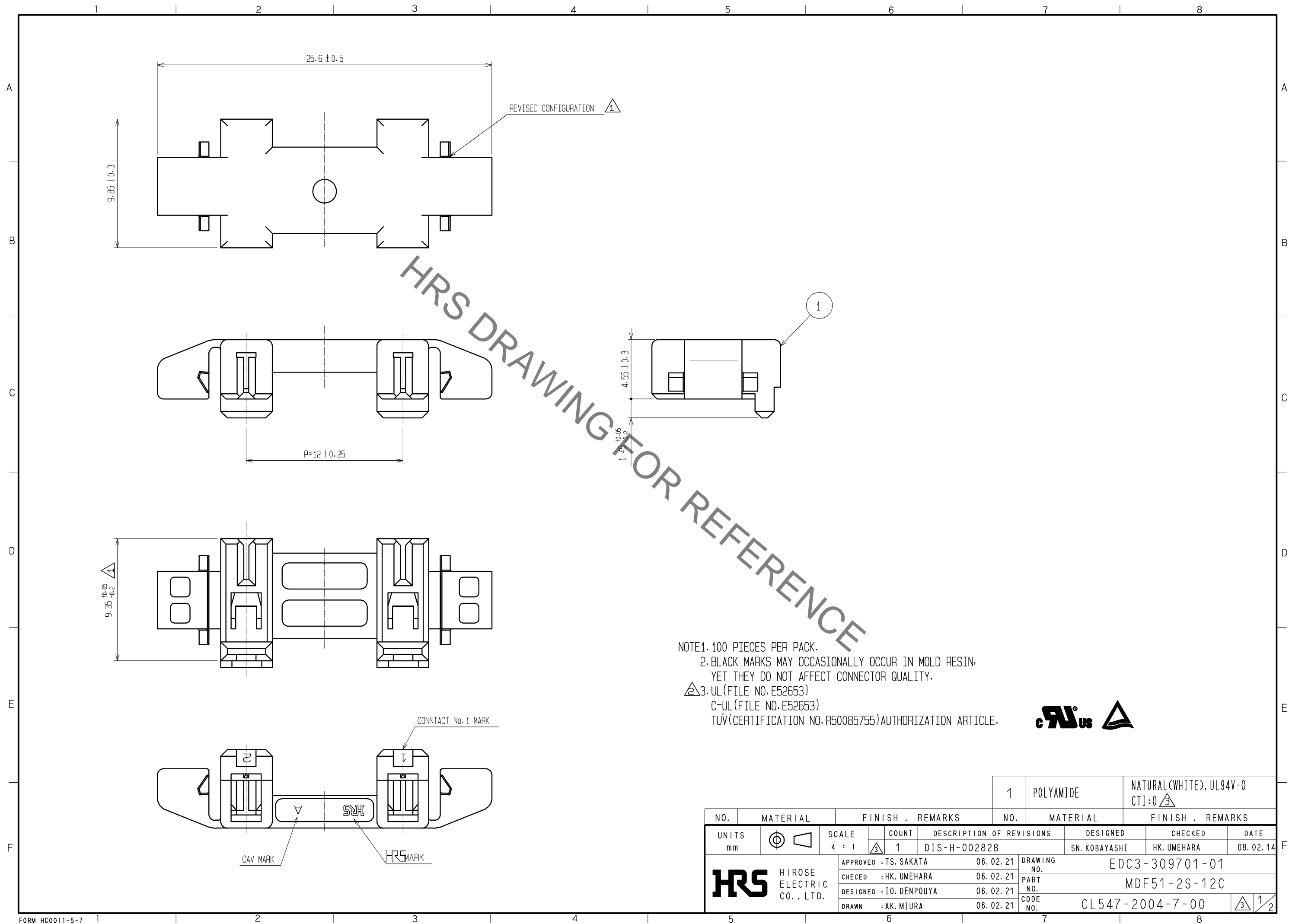


Jul.1.2019 Copyright 2019 HIROSE ELECTRIC CO., LTD. All Rights Reserved.
In case of consideration for using Automotive equipment / device which demand high reliability, kindly contact our sales window correspondents.



				1	POLYAMIDE	NATURAL (WHITE), UL94V-0 CTI:0		
NO.	MATERIAL	FINISH . REMARKS		NO.	MATERIAL	FINISH . REMARKS		
UNITS mm		SCALE 4 : 1	COUNT 1	DESCRIPTION OF REVISIONS DIS-H-002828		DESIGNED SN. KOBAYASHI	CHECKED HK. UMEHARA	DATE 08. 02. 14
HIROSE ELECTRIC CO., LTD.		APPROVED : TS. SAKATA	06. 02. 21	DRAWING NO. EDC3-309701-01				
		CHECKED : HK. UMEHARA	06. 02. 21	PART NO. MDF51-2S-12C				
		DESIGNED : IO. DENPOUYA	06. 02. 21	CODE NO. CL547-2004-7-00				
		DRAWN : AK. MIURA	06. 02. 21					

Jul.1.2019 Copyright 2019 HIROSE ELECTRIC CO., LTD. All Rights Reserved.
In case of consideration for using Automotive equipment / device which demand high reliability, kindly contact our sales window correspondents.

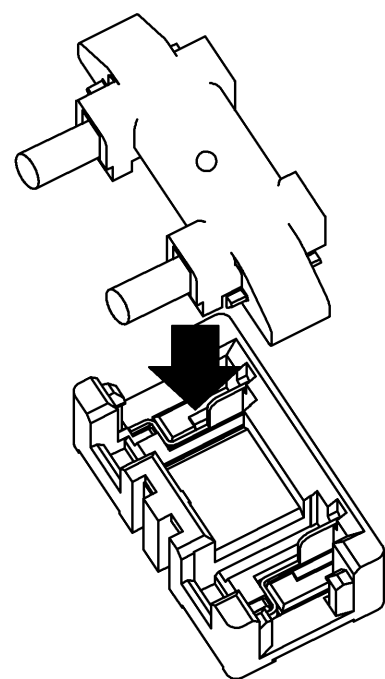
OPERATION MANUAL FOR MDF51 SERIES(BACK LIGHT CONNECTOR)

CONNECTOR INSERTION

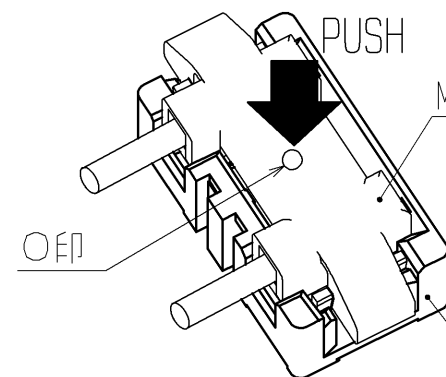
1. INSERT THE CONNECTOR WITH THE GUIDE OF THE CONNECTOR ON PCB.
2. PUSH THE "O" MARK IN THE CENTER OF THE CONNECTOR.

WHEN THE CRIMP SOCKET IS LOCKED, THERE IS A FIRM LOCK FEELING.

NOTE) INSERT THE CONNECTOR COMPLETELY TO THE END.



PROCEDURE 1

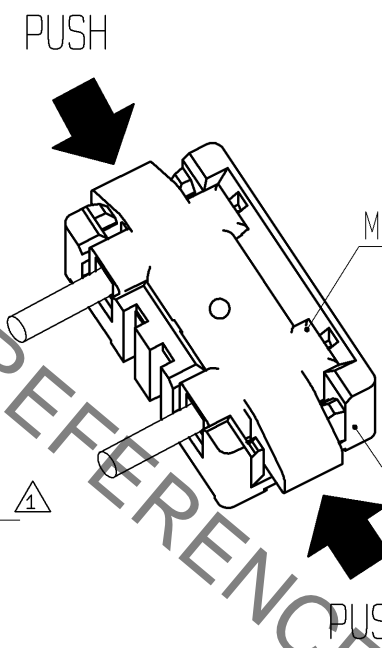


PROCEDURE 2

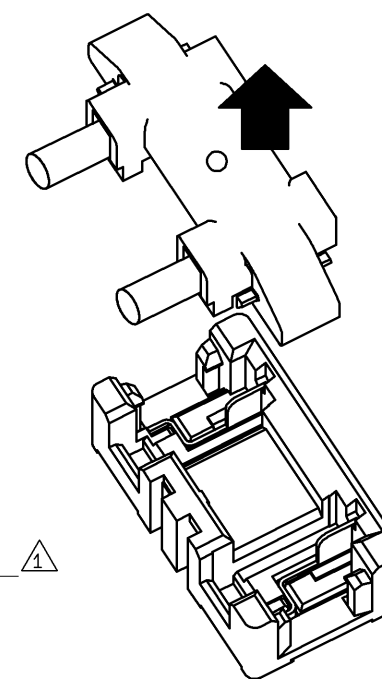
CONNECTOR WITHDRAWAL

1. PUSH THE LOCK OF THE MATED CRIMP SOCKET AT BOTH SIDES IN THE DIRECTIONS OF THE ARROWS.
2. WITH PUSHING THE LOCK, PULL STRAIGHT UP.

NOTE) PUSH AND UNLOCK THE SOCKET COMPLETELY.



PROCEDURE 1



PROCEDURE 2

HRS

DRAWING NO.	EDC3-309701-01
PART NO.	MDF51-2S-12C
CODE NO.	CL547-2004-7-00

3/2