

RAFIX 16 - Keylock switch, square collar, latching

1.30.076.051/0000

Only use contact blocks with momentary function.

Other lock variants available on request.

Included: 2 keys on ring.



General information

| | |
|----------------|--------|
| Form of collar | square |
|----------------|--------|

Dimensions

| | |
|-------------------|------------------|
| Collar dimensions | 24.95 x 24.95 mm |
| Collar dimensions | 24.95 x 24.95 mm |
| Overall height | 27.95 mm |
| Mounting depth | 44.7 mm |
| Mounting hole | 16.2 mm |
| Key grid | 25 x 25 mm |

Mechanical design

| | |
|-----------------------------|----------------------------|
| Mounting | ring nut |
| Contact function | latching |
| Contact arrangement | according to contact block |
| Illumination | no |
| Lock | Micromec |
| Wafers | 5 |
| Lock type | 001 |
| Number of locking positions | 500 |
| Main key | on request |
| Rotating angle | 1 x 90°, form L |
| Key removal position | 0+1 |

Mechanical characteristics

| | |
|-------------|--------|
| Torque max. | 1.3 Nm |
|-------------|--------|

Electrical characteristics

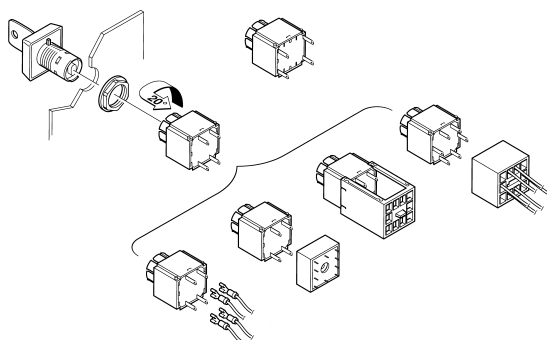
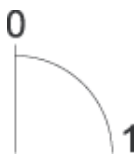
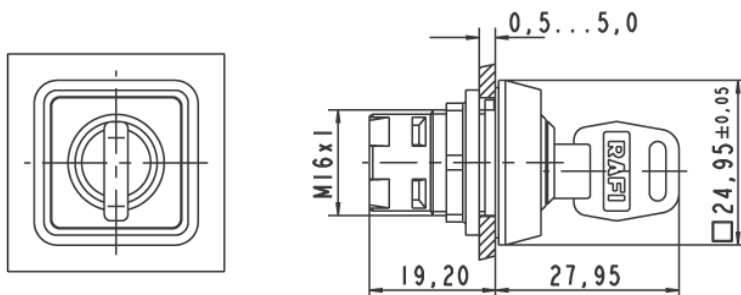
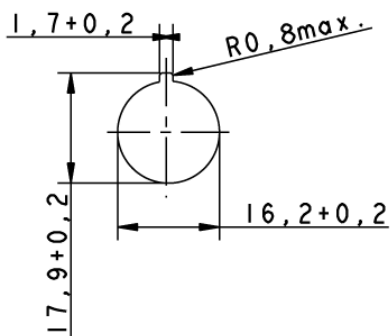
| | |
|------------------|----|
| Protection class | II |
|------------------|----|

Other specifications

| | |
|--------------------------------------|---------------------|
| ESD-strength lock / contact | 15 kV |
| ESD strength key/ front panel | 8 kV |
| Operating life (operations) | 65,000 cycle |
| Degree of protection from front side | IP65 (DIN EN 60529) |

| | |
|---|--|
| Operation temperature min. | -25 °C |
| Ambient temp. operating max. without lamp / LED | +70 °C |
| Storage temperature min. | -40 °C |
| Storage temperature max. | +85 °C |
| Environmental resistance | acc. to IEC 60068-2-14, -30, -33 and -78 |
| ROHS compliant | yes |
| REACH compliant | yes |

Panel cut-out



Technical data are approximate and intended solely for general orientation in the selection of a product.
 Subject to modifications and errors. Images and other graphics may only be similar.
 For more information, refer to www.rafi.de chapter Imprint / Data Protection.