

RAMO 22 K, M12, round collar, 1 NC + 1 NO, Gold, M12 4-pin A-coded, frontring black, 1 x 90°, shape V, latching, key removal position 0+1

NEW

fields of application

- Measurement-control-regulation
- Electrical engineering
- Mechanical and system engineering
- Signalling systems
- Vehicle construction
- Chemical industry
- Industrial robots

special features

- Precise haptics
- Safe gold contacts
- Simple M12 plug&play connection
- Protected contacts due to sealed housing

description

Keylock switch with various switching positions and M12 terminal

technical data

➤ general

| | |
|---|--|
| illuminated | No |
| Color | black |
| Collar color | black |
| Front ring color | black |
| Collar shape | round |
| Operating temperature, min. | -40 °C |
| Operating temperature, max. | 85 °C |
| Storage temperature, min. | -40 °C |
| Storage temperature, max. | 90 °C |
| Shock resistance according to standard IEC 60068-2-27 | 30 g at 11 ms amplitude semi-sinusoidal |
| Packaging | Box |
| Packaging unit | 2 pcs. |
| Environment resistance | IEC 60068-2-14 IEC 60068-2-30 IEC 60068-2-78 |
| Operating life | 50,000 Cycles |
| B10 | 62,627 Cycles |
| Degree of protection, front side, according to DIN EN 60529 | IP65 |
| Degree of protection, rear side, according to DIN EN 60529 | IP65 |

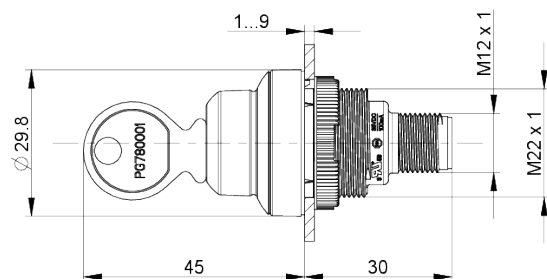
direct links

- [RAFI eCatalog](#)

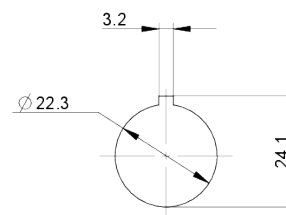
| | |
|--|--|
| Salt-spray resistance according to standard | IEC 60068-2-11 |
| RoHS compliant | Yes |
| REACH compliant | Yes |
| oscillation resistance according to standard IEC 60068-2-6 | 5 g at 10...500 Hz |
| > mounting diameters | |
| Mounting hole | 22.3 mm |
| Mounting depth | 30 mm |
| Installation height | 45 mm |
| Outside dimension, length | 29.8 mm |
| Outside dimension, width | 29.8 mm |
| Collar dimension | 29.8 mm |
| > mechanical data | |
| Actuation function | latching |
| Operating force, max. | 1.3 N |
| Contact function | 1 NC + 1 NO |
| Contact material | Gold |
| Key lock | Kaba |
| Key removal position | 0+1 |
| Rotating angle | 1 x 90°, shape V |
| Fixing | Threaded ring |
| Threaded ring torque, max. | 1.2 Nm |
| Terminal on the rear | M12 4-pin A-coded |
| PIN 1 | Normally closed contact 1 Normally open contact 1 |
| PIN 2 | Normally closed contact 1 |
| PIN 4 | Normally open contact 1 |
| > electrical data | |
| Rated voltage, min. | 10 V |
| Rated voltage, max. | 32 V |
| Rated current, max. | 0.2 A |

drawings

Dimensioned drawing



Mounting hole drawing



Schematic diagram

