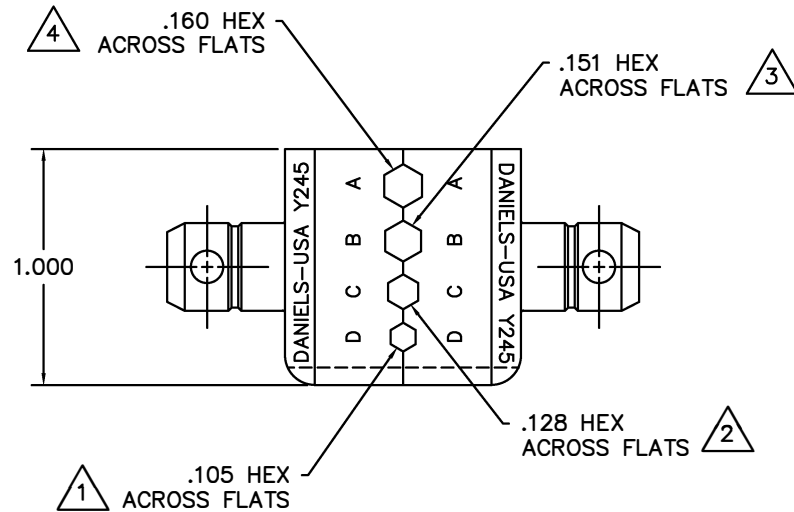
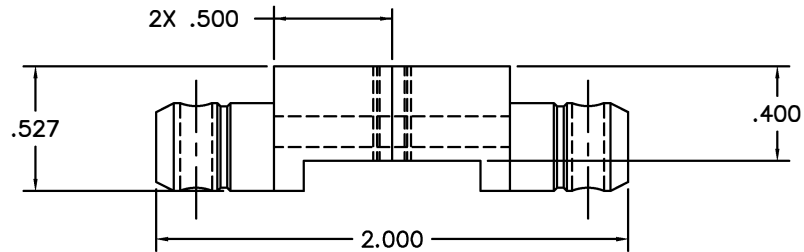


REVISIONS				
REV. SYM.	E.C.O. NUMBER	DESCRIPTION	BY DATE	APP'D DATE
2		REVISED GAGES	ENF 2-13-15	RRR 2-13-15



**UNCONTROLLED DOCUMENT  
WILL NOT BE UPDATED**

- 4. USE GAGE G1223.
- 3. USE GAGE G1246.
- 2. USE GAGE G1227.
- 1. USE GAGE G1228.

NOTES:

<b>RESTRICTED &amp; CONFIDENTIAL</b> CONFIDENTIAL PROPERTY OF DANIELS MANUFACTURING CORP. NOT TO BE DISCLOSED TO OTHERS, REPRODUCED OR USED FOR ANY OTHER PURPOSE EXCEPT AS AUTHORIZED IN WRITING BY DANIELS MANUFACTURING. MUST BE RETURNED TO DANIELS MANUFACTURING CORP. ON COMPLETION OF ORDER OR OTHER PURPOSE FOR WHICH LENT.	MATERIAL	ITEM	PART NO.	QTY.	DESCRIPTION/REMARKS		
	HEAT TREAT	DRN. D.DEPAIVA	DATE 8/9/97		DANIELS MANUFACTURING CORP. ORLANDO, FLORIDA CAGE 11851		
	FINISH	CHK'D. DE	DATE 9/97				
	DO NOT SCALE DRAWING		APP'D.	DATE	TITLE	DIE SET ENVELOPE DRAWING	
			DATE	WHERE USED:			
		NOTE: THIS DRAWING IS AN OUTLINE DRAWING OF THE RESPECTIVE DMC PART NUMBER INDICATED. ACTUAL DMC PART NUMBER IS DRAWING NUMBER WITHOUT THE "-ENV" SUFFIX.		SIZE B	SCALE 2X	CAD P/N Y245-ENV	SHEET 1 OF 1
				POSTING	DWG. NO. Y245-ENV	REV. 2	