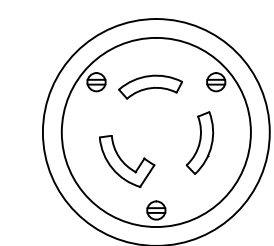


NEMA L5-15P

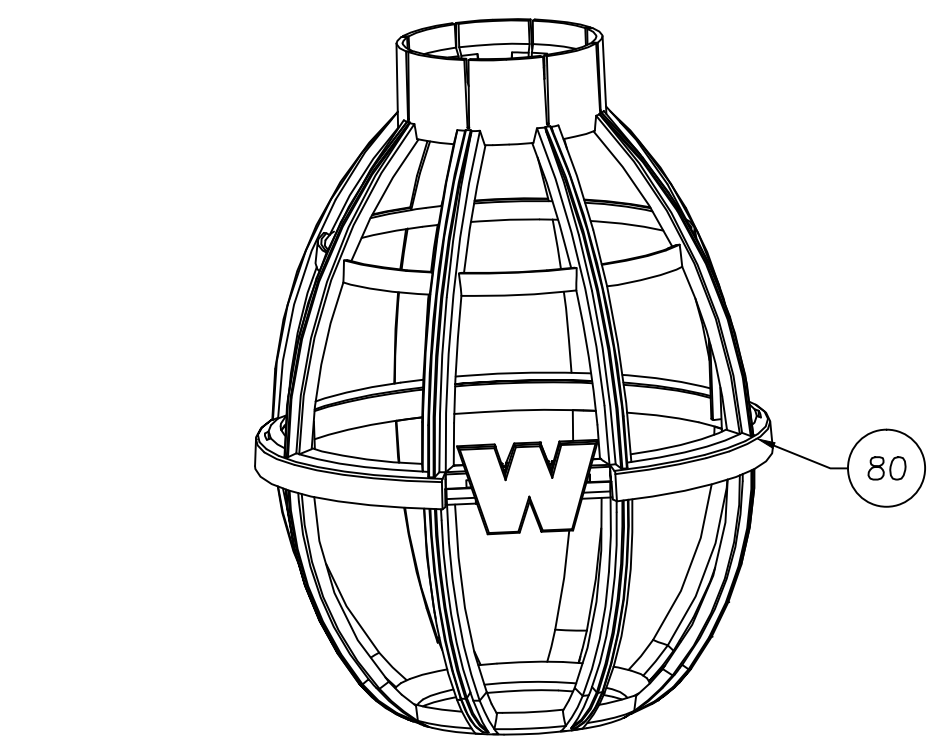
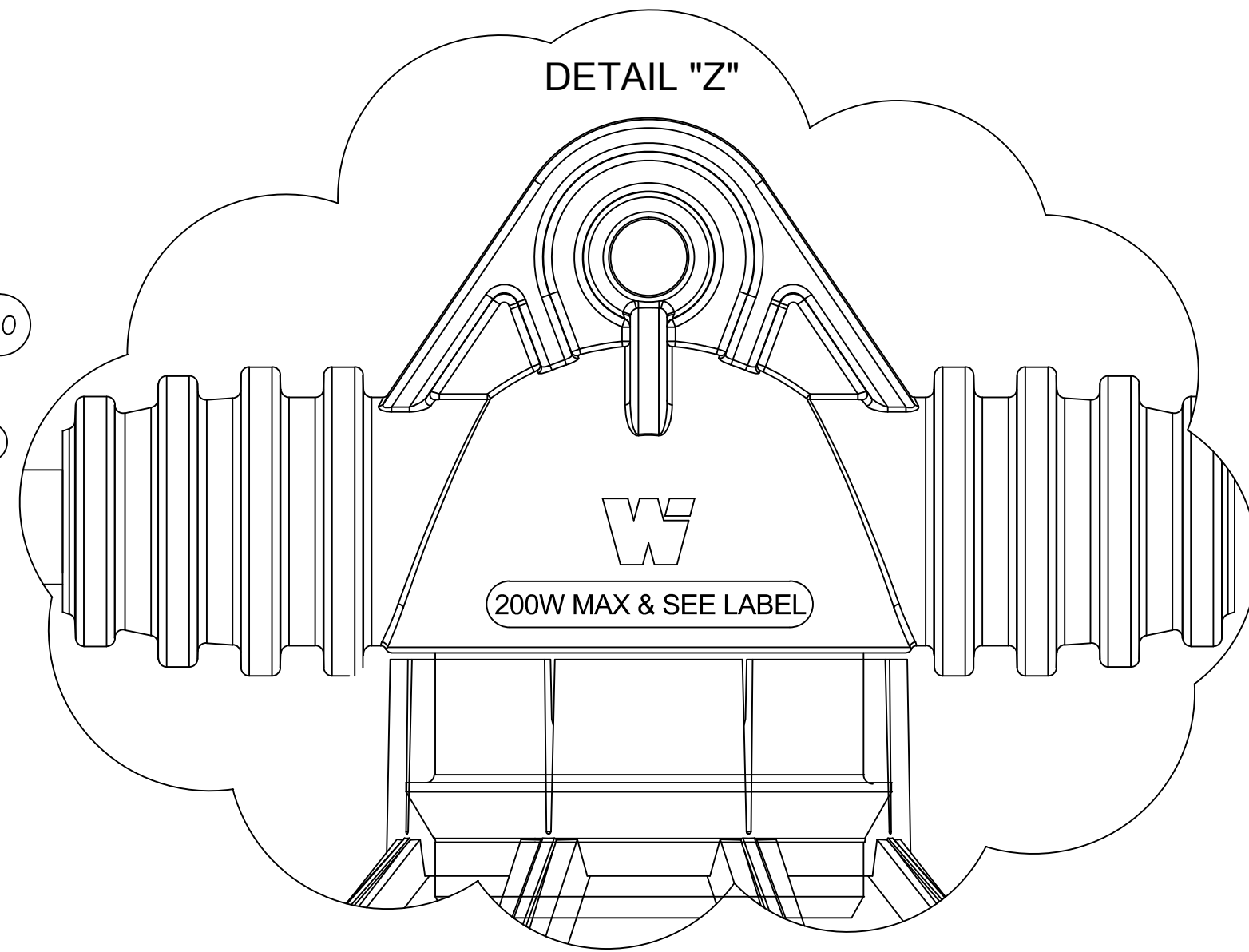
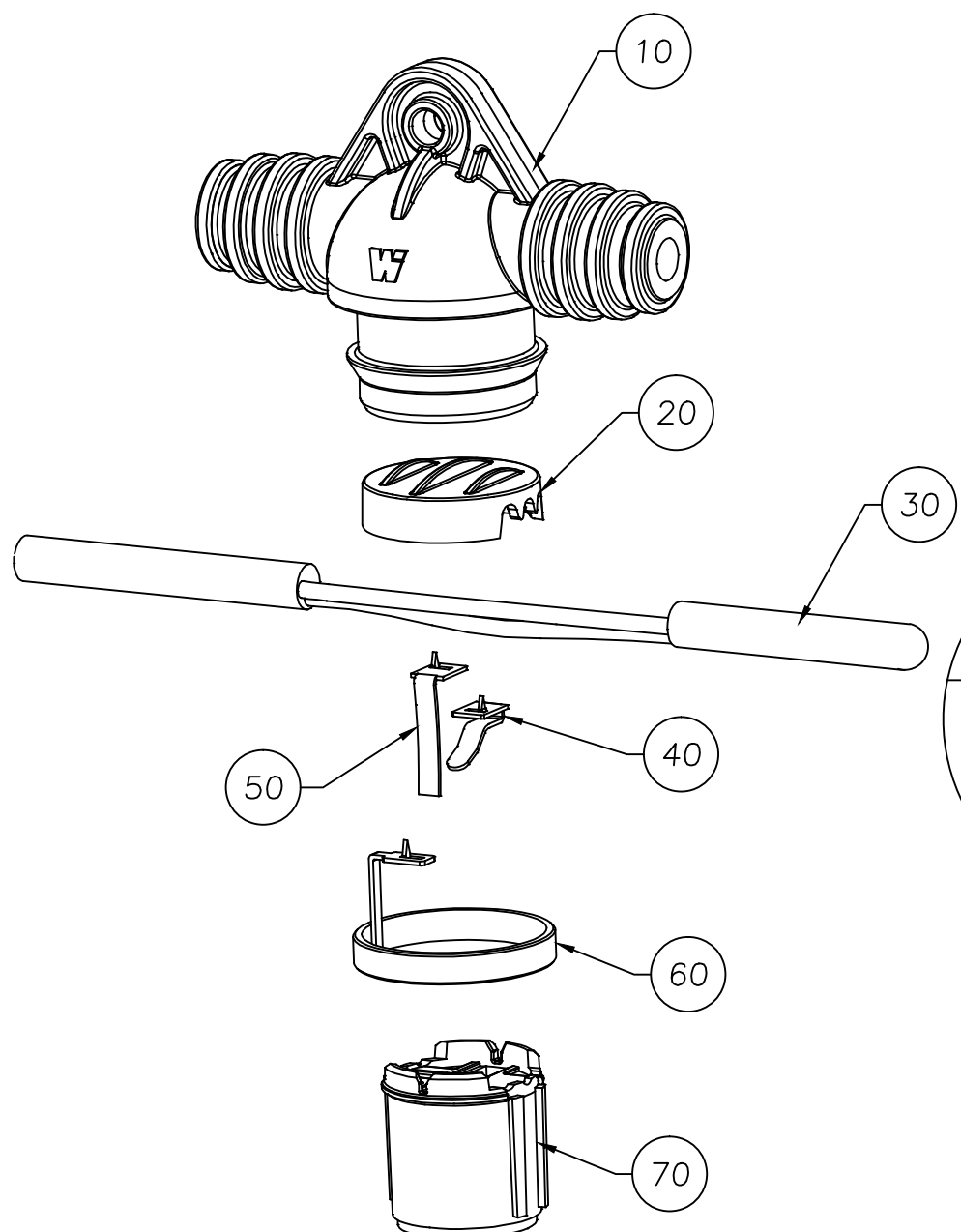
FLAG LABEL "A"

FLAG LABEL "B"



NEMA L5-15R

FLAG LABEL "C"



CAUTION-RISK OF SHOCK AND FIRE
USE WITH LAMP BASE IN UP POSITION ONLY.
DISCONNECT PLUG BEFORE RELAMPING OR SERVICING.
CAUTION - TO REDUCE THE RISK OF ELECTRIC SHOCK AND FIRE, DO NOT EXCEED MARKED LAMPHOLDER WATTAGE OR STRING MAXIMUM WATTAGE INCLUDING ANY ADDITIONAL STRING LOADS.

Assembled in Mexico

TEMPORARY LIGHTING STRING
CAT NO.1301110050 DATE CODE X XXXXXX
125 VOLT, 15 AMP MAX. 1875W MAX.
MAX PER SOCKET: 200W TYPE A INCAN.
OR 35W CFL/LED
INDOOR USE ONLY
Woodhead
molex

LABEL "A"

THIS STRINGLIGHT IS INTENDED FOR INDOOR USE ONLY.
DO NOT CONNECT OR DISCONNECT WHEN WET. REFER TO PRODUCT INSTRUCTION SHEET FOR APPROPRIATE LAMP TYPES.
DO NOT USE GE SURVIVOR OR ROUGH SERVICE TYPE LAMPS.

DO NOT EXCEED MARKED SOCKET WATTAGE OR STRING MAX. CURRENT.
ONLY USE SELF-BALLASTED LAMPS IF A SELF-BALLASTED LAMP TYPE IS IDENTIFIED ON THE TAG.
FOR USE ONLY ON GFCI PROTECTED CIRCUITS IN ACCORDANCE WITH ARTICLE 590 OF THE NEC.

LABEL "B"

CAUTION - TO REDUCE THE RISK OF ELECTRIC SHOCK DO NOT CONNECT OR DISCONNECT WHEN WET.

THIS STRINGLIGHT IS INTENDED FOR INDOOR USE ONLY.
DO NOT EXCEED 15 AMPS TOTAL STRING CURRENT

LABEL "C"

ITEM	DESCRIPTION	MATERIAL	COLOR
10	OVERMOLD SOCKET	THERMOPLASTIC RUBBER	BLACK
20	CAP	NYLON	BLACK
30	CABLE #12-3 SJTOW RATED AT 300V 60°C	PVC/COPPER	YELLOW
40	HOT CONTACT CENTER	BRASS	PLAIN
50	NEUTRAL CONTACT	BRASS	PLAIN
60	GROUNDING RING	BRASS	PLAIN
70	SCREWSHELL	NYLON	BLACK
80	LAMP GUARD	POLYPROPYLENE	YELLOW

RELEASE SALES DWG
EC NO: IPG2016-1124
DRWN: HRUIZ01 2016/01/18
CHKD: HKNEELAN 2016/01/18
APPR: JFMURPHY 2016/03/10

DESCRIPTION
REV

QUALITY SYMBOL
=0
=0

GENERAL TOLERANCES (UNLESS SPECIFIED)

	mm	INCH
4 PLACES	±---	±---
3 PLACES	±---	±.005
2 PLACES	±---	±.010
1 PLACE	±---	±.020

ANGULAR ±1/2°

DRAFT WHERE APPLICABLE
MUST REMAIN WITHIN DIMENSIONS

DIMENSION STYLE
INCH
DRAWN BY
HRUIZ01
DATE
2016/01/18
CHECKED BY
HKNEELAN
DATE
2016/01/18
APPROVED BY
JFMURPHY
DATE
2016/03/10

MATERIAL NO.
1301110050

SIZE
C

SCALE
NTS

DESIGN UNITS
INCH

THIRD ANGLE PROJECTION

TITLE
STRINGLIGHT (38.5 FT)
#12-3 SJTOW YELLOW CABLE
NEMA L5-15P &NEMA L5-15R
MOLEX INCORPORATED

DOCUMENT NO.
SD-130111-010

SHEET NO.
1 OF 1