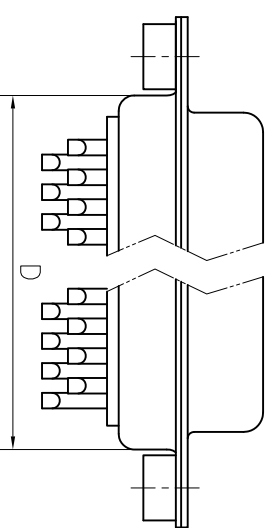
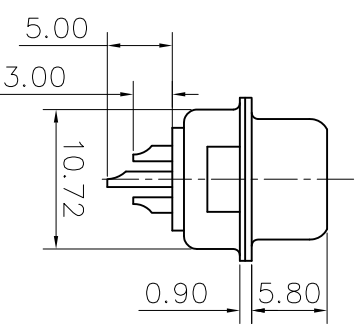
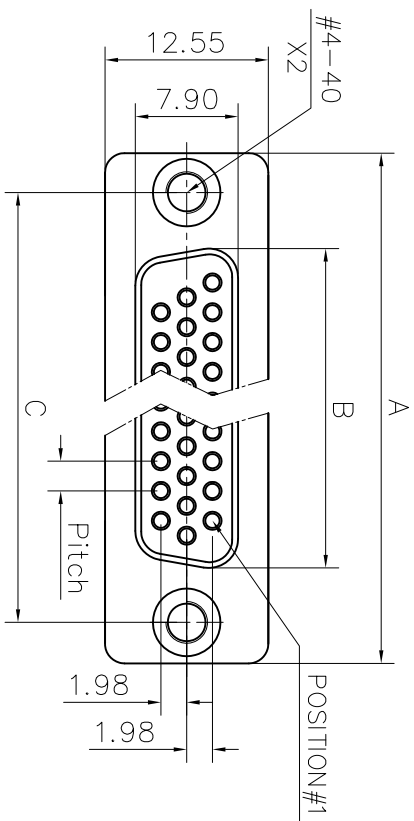


This document is the property of Amphenol Corporation and is addressed to the customer. It is not to be reprinted, reproduced or used in any form without the prior consent of Amphenol Corporation. Amphenol Corporation reserves the right to make changes to this document without the prior consent, and that no right is granted to disclose or to use any information in this document.



# Customer drawing

DIM.S	A	B	C	D	Pitch
SHELL	A	B	C	D	Pitch
15	30.81	16.33	24.99	19.20	2.29
26	39.20	24.70	33.32	27.70	2.29
44	53.05	38.40	47.04	41.10	2.29
62	69.40	54.80	63.50	57.30	2.41

REVISIONS				
S/N	E/DN	DESCRIPTION	DATE	APPROVED
1			Mar/03/11	

## D-SUB TECHNICAL DATA

**SHELL :** Brass, 100u" min tin over 50u" min nickel  
**BODY :** Glass filled thermoplastic.  
 Flame retardant to UL94 V-0, Color Black

**CONTACTS :** Copper alloy  
 Gold flash over 50u" min nickel on mating area  
 100u" min tin over 50u" min nickel on solder area

**REAR NUT :** Brass, 100u" min tin over 50u" min nickel

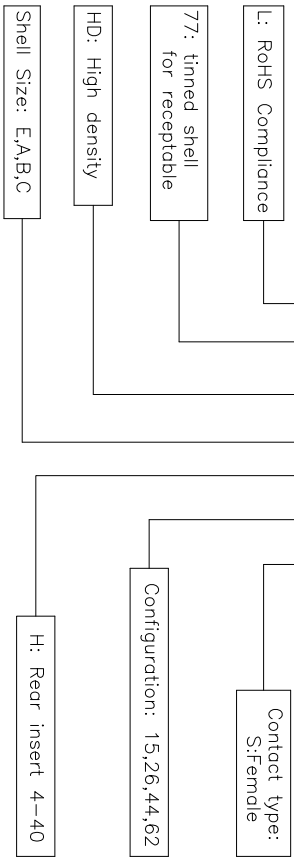
**ELECTRICAL :** Voltage rating : 250 V Rms to 50 Hz  
 Current rating : 3A  
 Insulation resistance : 1000 M Ohms  
 Contact resistance 20 mOhms max.

**CLIMATIC :** Temperature range -55 °C up to 125°C

**MARKING :** Amphenol-...(Series No.)  
 Commercial reference  
 Manufacturing date

## PRODUCT CODE

L 77 HD X H X X S



**UNLESS OTHERWISE SPECIFIED**

TOLERANCES	METRIC	APPROVAL	DATE
U.S.	0.30	DRAWN	Mar/03/11
	0.20	CHECKED	Mar/03/11
	0.20		

SEE NOTES  
 REMOVE SHARP EDGES  
 DIMENSIONS  
 INCHES  
 MILLIMETERS

ANGLE OF PROJECTION

**TITLE**  
 Amphenol  
 Amphenol East Asia Limited

Stamped and formed connector, HD series

SIZE	DRAWING NO.	REV.
A4	C L77HDHXXS	1

SCALE NONE SHEET 1 OF 1