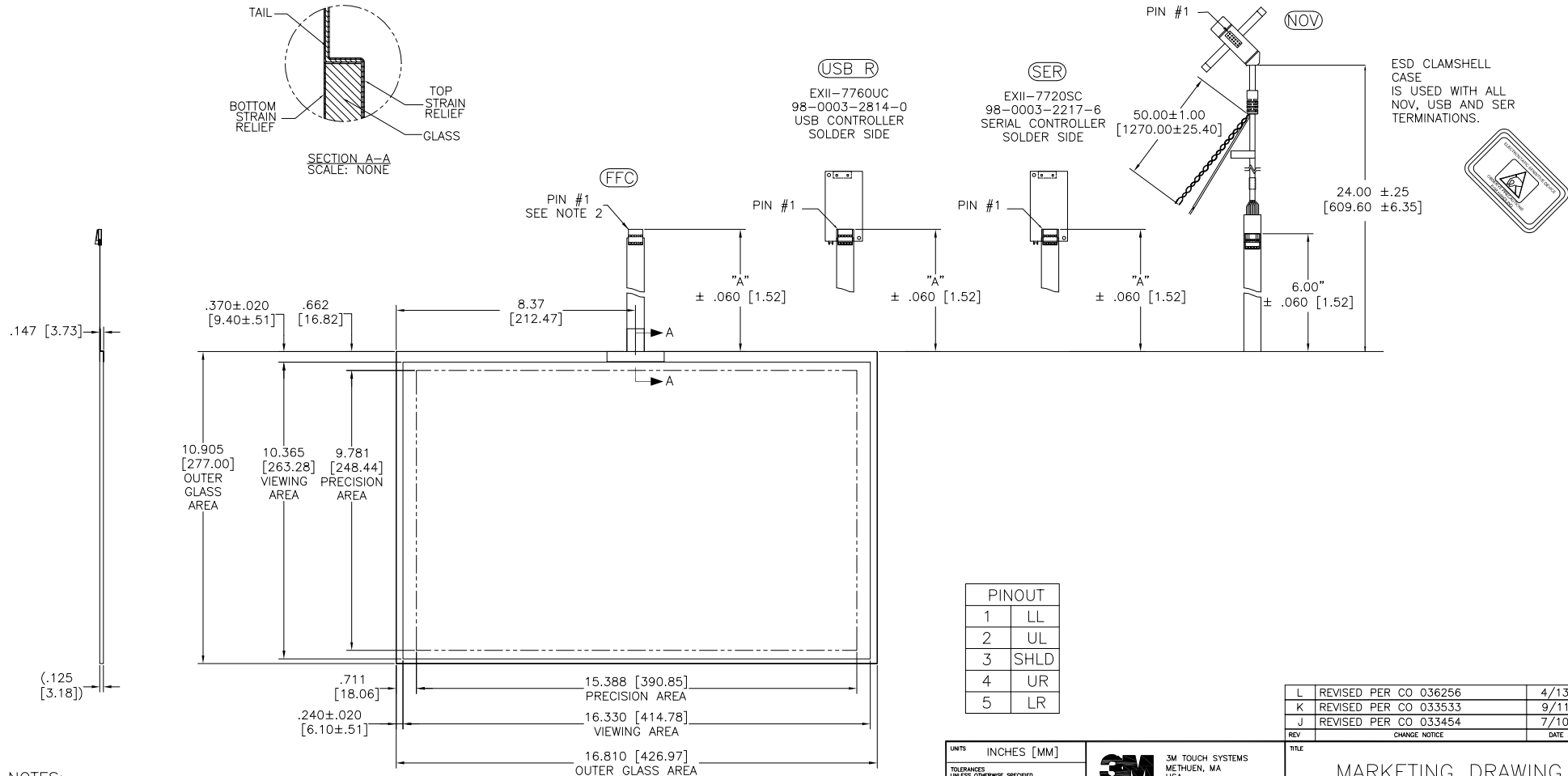
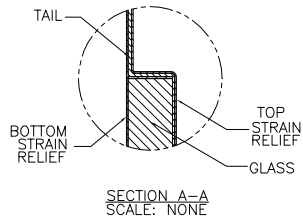


OGA DIAGONAL: 20.04 [508.95]  
 VA DIAGONAL: 19.34 [491.28]  
 PA DIAGONAL: 18.23 [463.13]

TOP LEVEL NUMBER	US NUMBER	TYPE	DIM "A" (TOTAL GLASS TO CONNECTOR)	A/G FINISH	PROD SPEC
17-9251-204	98-0003-2206-9	FFC	6.00" [152.40]	AG500	23655
17-9251-205	98-0003-2716-7	FFC	8.00" [203.20]	AG500	23655
17-9251-206	98-0003-2717-5	NOV	SEE DWG	AG500	23655
17-9251-223	98-0003-2208-5	SER	6.00" [152.40]	AG500	23655
17-9251-227	98-0003-2720-9	SER	8.00" [203.20]	AG500	23655
17-9251-220	98-0003-2718-3	USB R	6.00" [152.40]	AG500	23655
17-9251-226	98-0003-3046-8	USB R	8.00" [203.20]	AG500	23655
N/A	98-0003-3415-5	FFC	8.00" [203.20]	WC100	34523
N/A	98-0003-3416-3	USB R	8.00" [203.20]	WC100	34523
N/A	98-0003-3417-1	SER	8.00" [203.20]	WC100	34523



NOTES:

1. WEIGHT OF GLASS IN GRAMS: 927±10%
2. NICOMATIC HOUSING P/N: OLO5  
 NICOMATIC RECEPTACLES (PINS) MATTE TIN PLATED P/N: 14106-12  
 HOUSING ORIENTED WITH LATCH DOWN

PINOUT	
1	LL
2	UL
3	SHLD
4	UR
5	LR

L	REVISED PER CO 036256	4/13	SB
K	REVISED PER CO 033533	9/11	SB
J	REVISED PER CO 033454	7/10	SB
REV	CHANGE NOTICE	DATE	DRW

UNITS	INCHES [MM]
TOLERANCES UNLESS OTHERWISE SPECIFIED	
.X	± .03 [.76]
.XX	± .015 [.38]
.XXX	± .01 [.25]
ANGLES	± 1°
THIRD ANGLE PROJECTION	
DO NOT SCALE DRAWING	
SCALE	1 = 1

 3M TOUCH SYSTEMS METHUEN, MA USA	© COPYRIGHT 2004 THIS DOCUMENT IS COPYRIGHTED PROPERTY OF THE 3M COMPANY AND MAY NOT BE REPRODUCED WITHOUT 3M WRITTEN PERMISSION OR USED OR DISCLOSED FOR OTHER THAN 3M AUTHORIZED PURPOSES.		
	DRAWN	MTD 9/7/06	
SIZE	C	DOCUMENT NO.	32739-MKT
SHEET	1 OF 1	REV	L

TITLE			
MARKETING DRAWING SCT32NN 19.34" W			
DATE	4/13	BY	SB
DATE	9/11	BY	SB
DATE	7/10	BY	SB