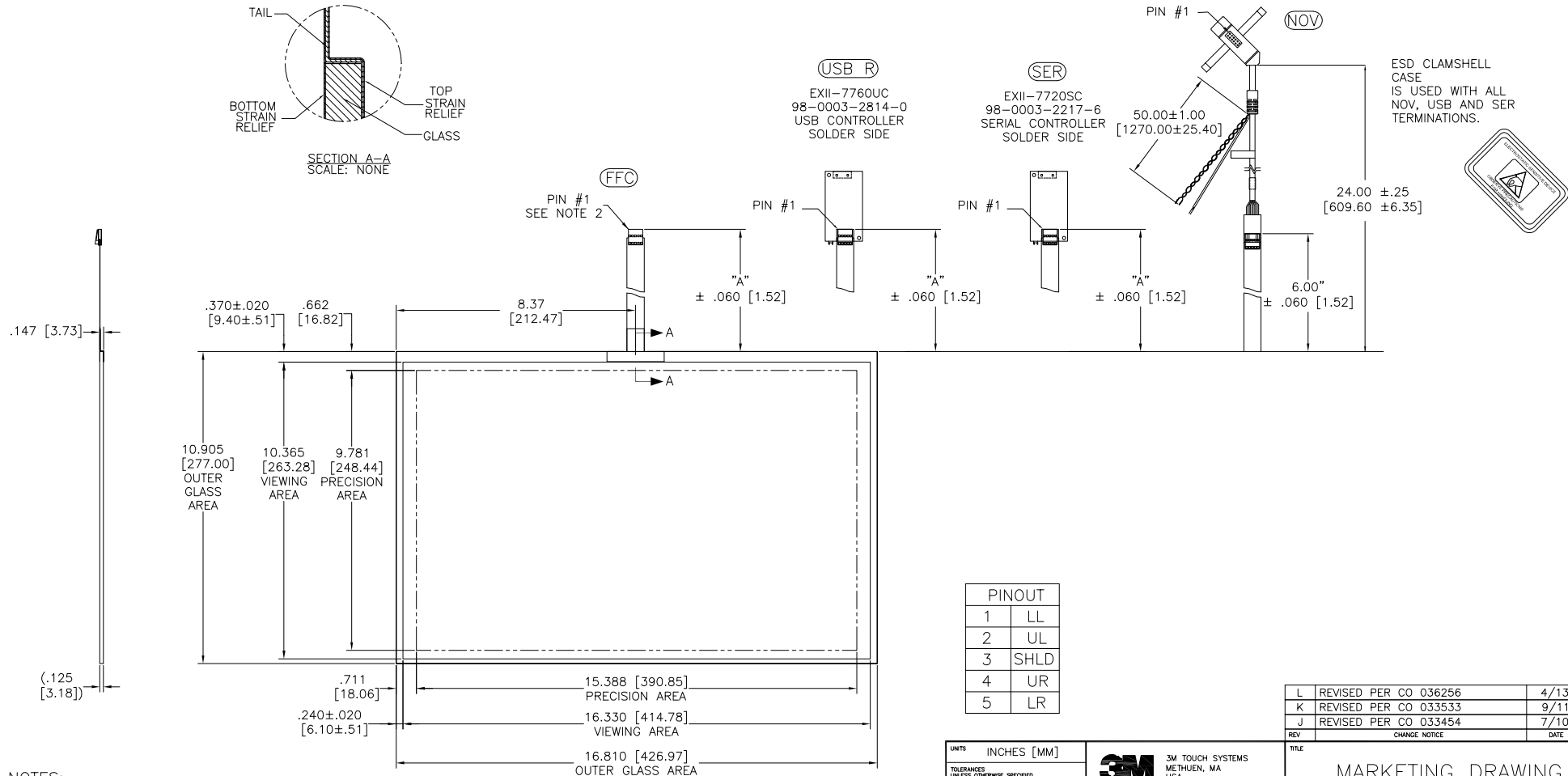
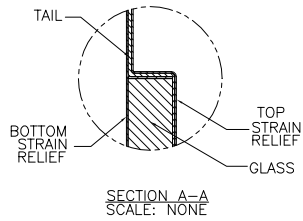


OGA DIAGONAL: 20.04 [508.95]  
 VA DIAGONAL: 19.34 [491.28]  
 PA DIAGONAL: 18.23 [463.13]

TOP LEVEL NUMBER	US NUMBER	TYPE	DIM "A" (TOTAL GLASS TO CONNECTOR)	A/G FINISH	PROD SPEC
17-9251-204	98-0003-2206-9	FFC	6.00" [152.40]	AG500	23655
17-9251-205	98-0003-2716-7	FFC	8.00" [203.20]	AG500	23655
17-9251-206	98-0003-2717-5	NOV	SEE DWG	AG500	23655
17-9251-223	98-0003-2208-5	SER	6.00" [152.40]	AG500	23655
17-9251-227	98-0003-2720-9	SER	8.00" [203.20]	AG500	23655
17-9251-220	98-0003-2718-3	USB R	6.00" [152.40]	AG500	23655
17-9251-226	98-0003-3046-8	USB R	8.00" [203.20]	AG500	23655
N/A	98-0003-3415-5	FFC	8.00" [203.20]	WC100	34523
N/A	98-0003-3416-3	USB R	8.00" [203.20]	WC100	34523
N/A	98-0003-3417-1	SER	8.00" [203.20]	WC100	34523



NOTES:

- WEIGHT OF GLASS IN GRAMS: 927±10%
- NICOMATIC HOUSING P/N: OLO5  
 NICOMATIC RECEPTACLES (PINS) MATTE TIN PLATED P/N: 14106-12  
 HOUSING ORIENTED WITH LATCH DOWN

UNITS	INCHES [MM]	 3M TOUCH SYSTEMS METHUEN, MA USA © COPYRIGHT 2004 THIS DOCUMENT IS COPYRIGHTED PROPERTY OF THE 3M COMPANY AND MAY NOT BE REPRODUCED WITHOUT 3M WRITTEN PERMISSION OR USED OR DISCLOSED FOR OTHER THAN 3M AUTHORIZED PURPOSES.	TITLE MARKETING DRAWING SCT32NN 19.34" W	
TOLERANCES UNLESS OTHERWISE SPECIFIED	.X ± .XX ±.03 [.76] .XXX ±.015 [.38] ANGLES ±1°		L REVISED PER CO 036256 4/13 SB K REVISED PER CO 033533 9/11 SB J REVISED PER CO 033454 7/10 SB REV CHANGE NOTICE DATE DRW	
THIRD ANGLE PROJECTION		DRAWN MTD 9/7/06	CAD FORMAT AUTOCAD	SHEET 1 OF 1
DO NOT SCALE DRAWING	SCALE 1 = 1	SIZE C	DOCUMENT NO. 32739-MKT	REV L