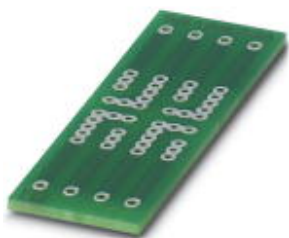


PCB - P 1-EMG 25 - 2947190

Please be informed that the data shown in this PDF Document is generated from our Online Catalog. Please find the complete data in the user's documentation. Our General Terms of Use for Downloads are valid (<http://phoenixcontact.com/download>)



PCB for assembling electronic components



Key Commercial Data

Packing unit	20 pc
GTIN	
GTIN	4017918082666

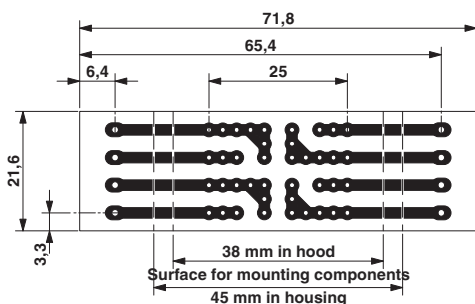
Technical data

Environmental Product Compliance

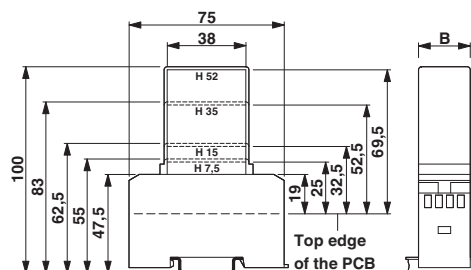
China RoHS	Environmentally friendly use period: unlimited = EFUP-e
	No hazardous substances above threshold values

Drawings

Dimensional drawing



Dimensional drawing



Pitch 5 mm

a = Area for mounting components, 38 mm in the hood
 b = Area for mounting components, 45 mm in the housing

1 = Top edge of the PCB

PCB - P 1-EMG 25 - 2947190

B = Housing width

Phoenix Contact 2018 © - all rights reserved
<http://www.phoenixcontact.com>

PHOENIX CONTACT GmbH & Co. KG

Flachsmarktstr. 8

32825 Blomberg

Germany

Tel. +49 5235 300

Fax +49 5235 3 41200

<http://www.phoenixcontact.com>