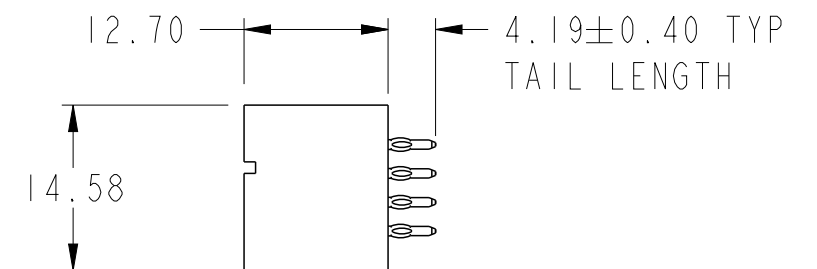
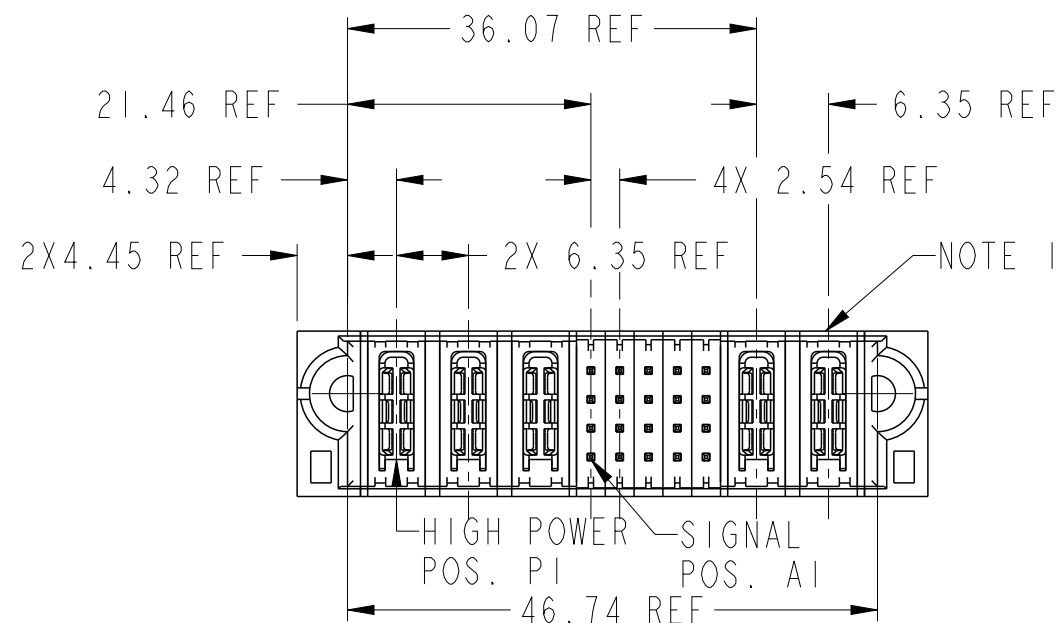
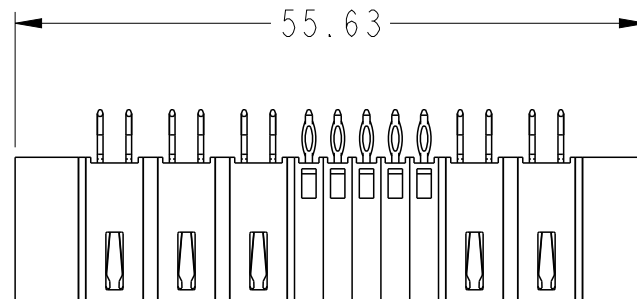
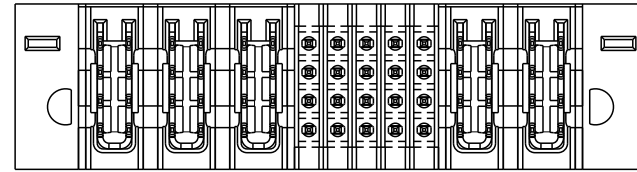


PART NUMBER SEE SHEET 2



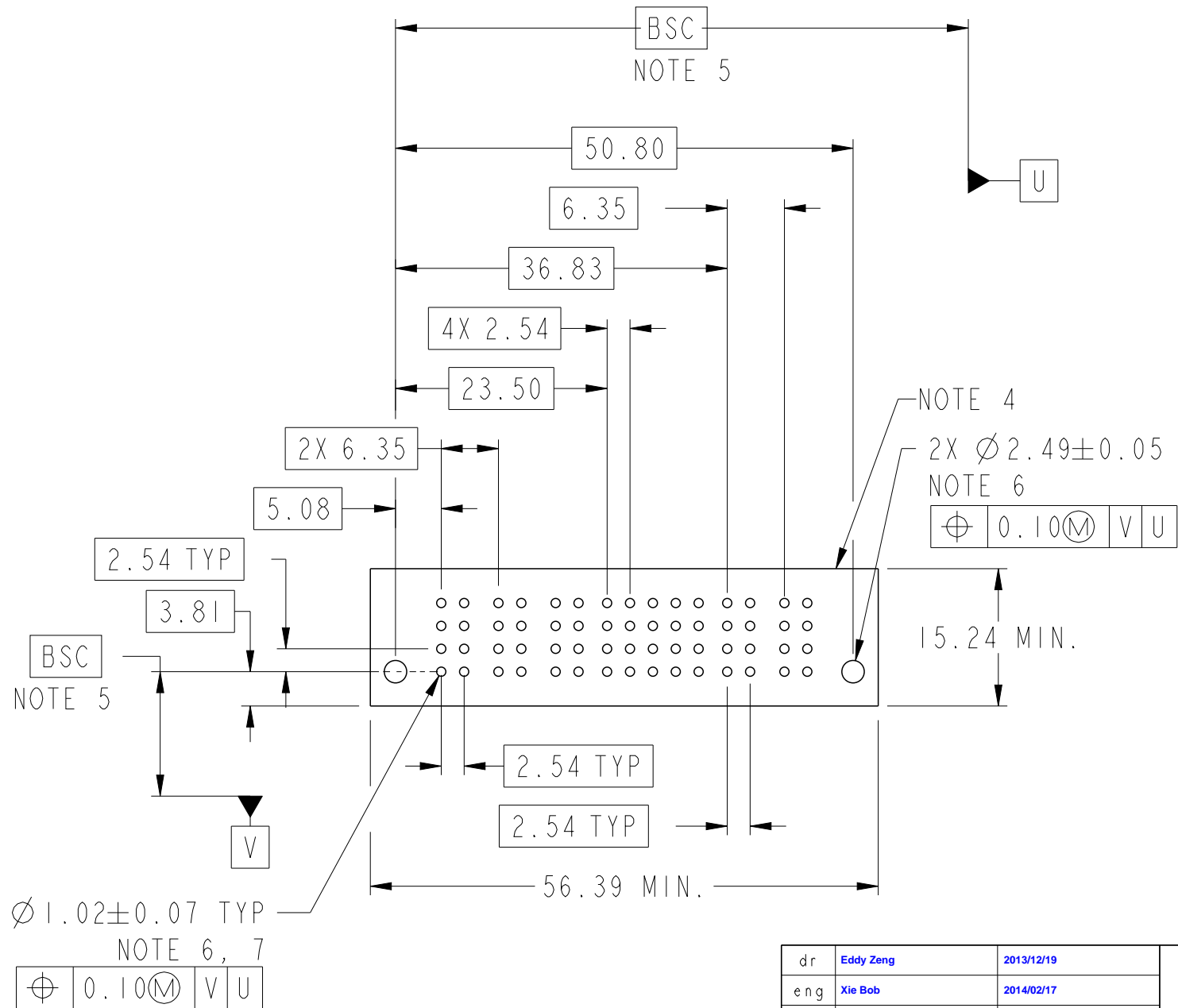
spec ref *				dr	Eddy Zeng	2013/12/19	projection		MM		size	A3	scale	3:2	
tolerance std				eng	Xie Bob	2014/02/17					ecn no				-
ASME Y14.5				chr	Li-He	2014/02/16					rel level				Released
TOLERANCES UNLESS OTHERWISE SPECIFIED				appr	Pei-Ming Zheng	2014/02/17					product family				PwrBlade+
surface	linear	0.X	±0.5		title 3HP + 20S + 2HP VERTICAL PF HEADER					dwg no	10106129-5005001		rev	A	
		0.XX	±0.25												
		0.XXX	±0.10												
ASME Y14.5	angular	0°	±2°	www.fci.com	cat. no.			Product - Customer Drw				sheet 1 of 3			

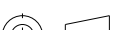




Copyright FCI.

PRODUCT NO.	ROWS	HP				SIGNAL					HP		E2
		E1	P1	P2	P3	1	2	3	4	5	P4	P5	
10106129-5005001LF	D C B A		H4	H4	H4	G	G	G	G	G	H4	H4	

CODE	DESCRIPTION
G	STD SIGNAL CONTACT
H4	STD HIGH POWER CONTACT



dr	Eddy Zeng	2013/12/19		projection		size	A3	scale	3:2	
eng	Xie Bob	2014/02/17		ecn no		-				
chr	Li- He	2014/02/16		rel level		Released				
appr	Pei-Ming Zheng	2014/02/17	product family			PwrBlade+				
		title				3HP + 20S + 2HP	dwg no		10106129-5005001	rev
		VERTICAL PF HEADER								A
www.fci.com		cat. no.		Product - Customer Drw				sheet 2 of 3		

A

B

C

D

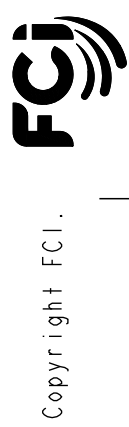
A

B

C

D

- NOTES:
- 1) "FCI", PART NUMBER AND DATE CODE TO BE MARKED ON THIS SURFACE.  
THE MARK CAN BE OMITTED IF THERE IS NOT ENOUGH SPACE ON THIS SURFACE.
  - 2) MATERIALS:
    - HOUSING - GLASS FILLED WITH HIGH TEMP THERMOPLASTIC, UL94V-0.
    - SIGNAL CONTACT - COPPER ALLOY.
    - POWER CONTACT - HIGH CONDUCTIVITY COPPER ALLOY.
  - 3) PLATING SPECIFICATION REFER TO FCI 10116351
  - 4) DENOTES CONNECTOR KEEP OUT ZONE.
  - 5) DATUM AND BASIC DIMENIONS WERE ESTABLISHED BY CUSTOMER.
  - 6) ALL HOLE DIAMETERS ARE FINISHED HOLE SIZES.
  - 7) 1.15±0.025MM DRILLED HOLE PLATED WITH 0.00762MM MIN Sn  
OVER 0.0254-0.0762MM Cu PLATING TO ACHIEVE A 1.02±0.07MM HOLE.
  - 8) PRODUCT SPECIFICATION REFER TO FCI GS-12-658.  
APPLICATION SPECIFICATION REFER TO FCI GS-20-141.  
PRODUCT PACKAGED IN TRAYS, REFER TO FCI GS-14-1502.



dr	Eddy Zeng	2013/12/19	<div>projection</div> <div></div>	<div>MM</div> <div></div>	size	A3	scale	3:2
eng	Xie Bob	2014/02/17			ecn no	-		
chr	Li- He	2014/02/16			rel level	Released		
appr	Pei-Ming Zheng	2014/02/17	product family	PwrBlade+				
<div>www.fci.com</div>			title			3HP + 20S + 2HP		rev
			VERTICAL PF HEADER			dwg no		A
cat. no.			Product - Customer Drw				sheet 3 of 3	