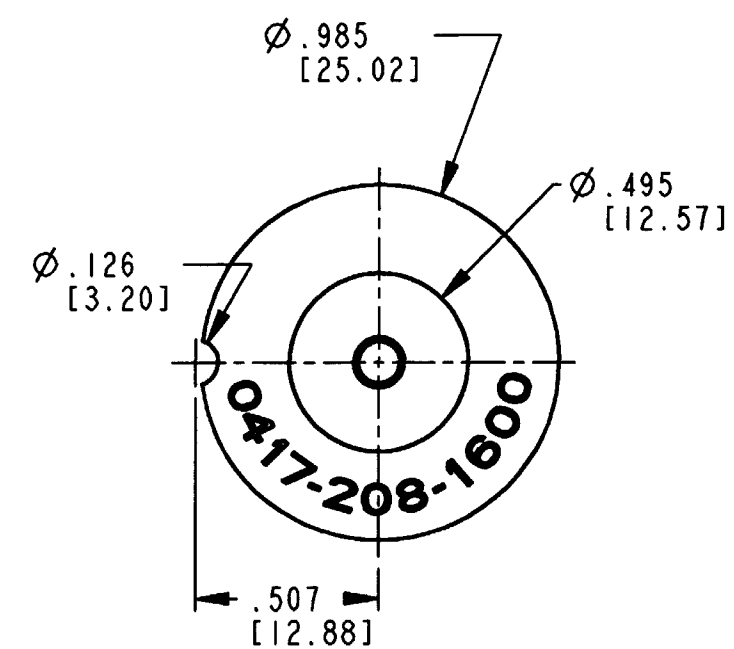
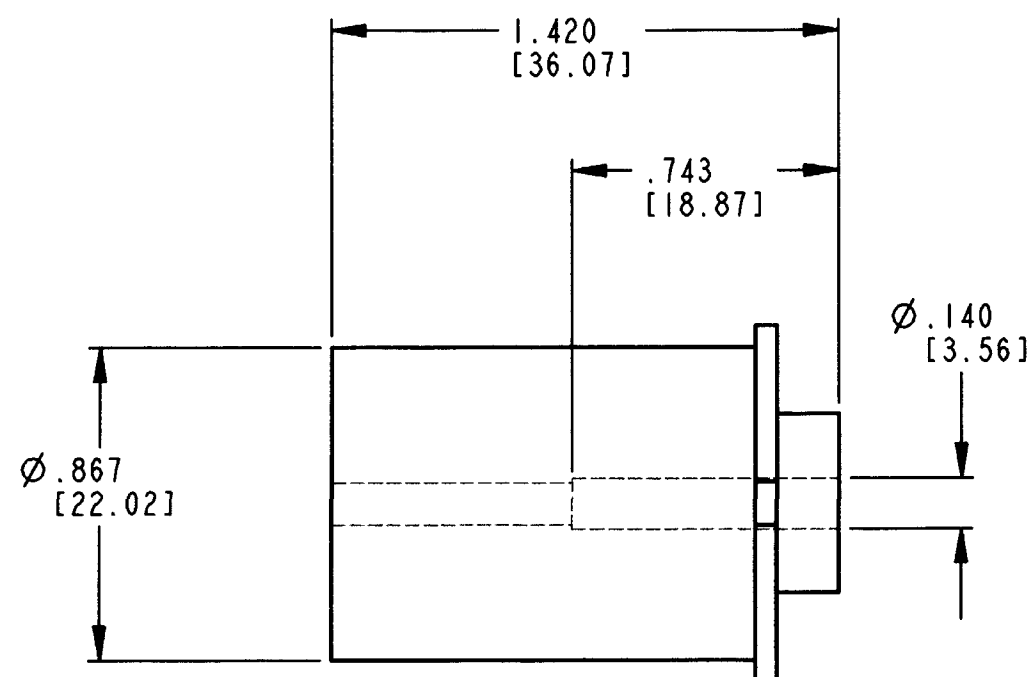


REV  
NC 0417-208-1600

REVISIONS			
SYM	DESCRIPTION	DATE	APPROVED
NC	NEW RELEASE PER E.O. P 15228	3-6-97	RDR



- NOTES:
4. THIS LOCATOR COMBINED WITH DIE ASSEMBLY P/N 400-414DA-16N IN POWER CRIMPER P/N HDP-400 CRIMPS 16 AND 18 AWG WIRE IN 0462-221-16\*\* SOCKET CONTACTS.
  3. THIS LOCATOR FITS THE HDP-400 POWER CRIMPER.
  2. ALL DIMENSIONS ARE INCHES (METRIC).
  1. ALL DIMENSIONS ARE FOR REFERENCE ONLY.

TOLERANCES UNLESS OTHERWISE SPECIFIED DECIMALS: .xxx±.005 ANGLES: ±0°30'0 TIR: 0.10 PARTS TO BE FREE OF BURRS AND SHARP EDGES		SIGNATURE & DATE	
MATERIAL	DR	LE BUI 6FEB97	
FINISH	CHK	S. Bui 3-3-97	
	PE	Le Bui 3-3-97	
	APPD	R. Rod 3-6-97	
	SCALE	NONE	WT

LOCATOR  
HDP 400  
FOR 0462-221-16\*\*  
CONTACT  
ENVELOPE

CP	MATL. CODE
<b>The Deutch Company</b> DEUTSCH I.P.D. 37140 INDUSTRIAL AVE. HEMET, CALIF. 92545	
<b>B</b>	<b>0417-208-1600</b>
DWG SIZE	CODE 11139 SHEET   OF