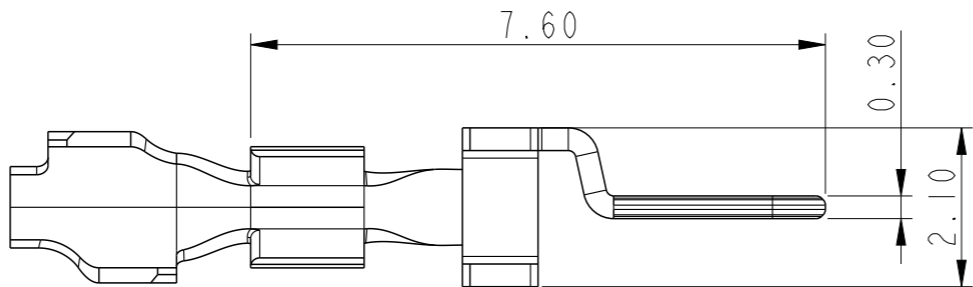


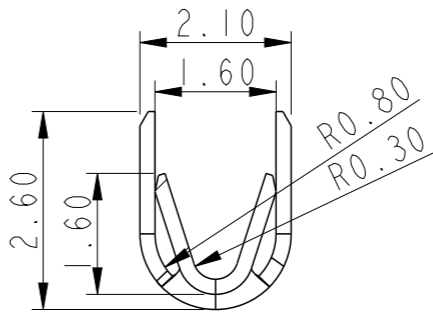
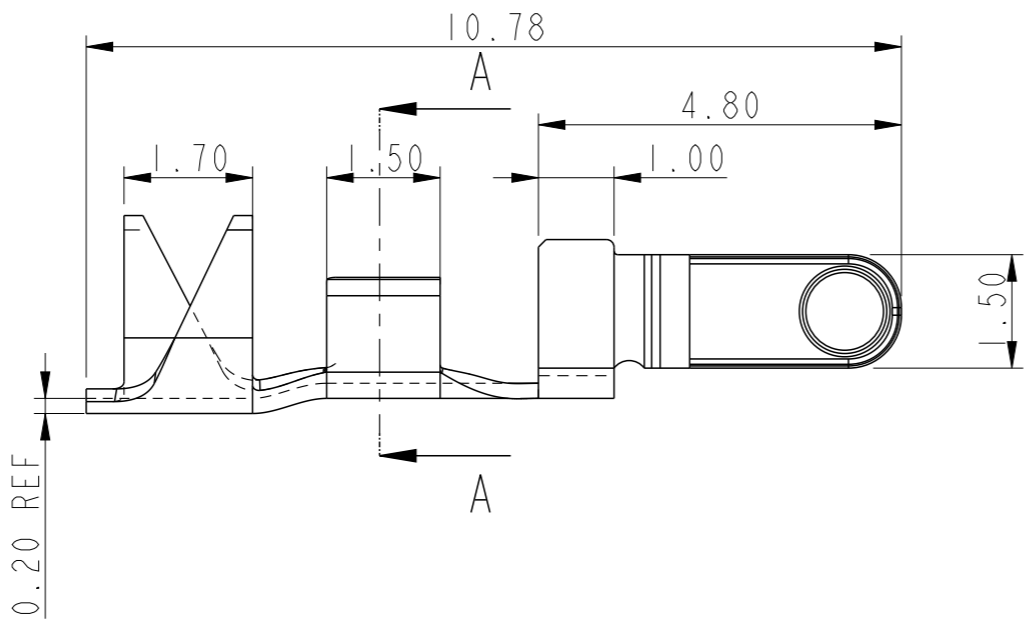
LOOSE PIECE	10120045-P01LF
ON STRIP	10120045-P02LF

NOTE:-

- 1.TERMINAL MATERIAL: COPPER ALLOY
- 2.PLATING FINISH:
AU/GXT OVER NICKEL IN CONTACT AREA
TIN OVER NICKEL IN TERMINAL AREA
- 3.LEAD FREE OR RoHS DIRECTIVE LABELING
TO BE PROVIDED AS PER GS-14-920
- 4."LF" SUFFIX TO THE PRODUCT NUMBER FOR RoHS
COMPATIBLE/LEAD FREE VERSION
- 5.THIS PRODUCT MEETS EUROPEAN UNION
DIRECTIVES AND OTHER COUNTRY
REGULATIONS AS DESCRIBED IN GS-47-0004
- 6.WIRE RANGE: 22~30 AWG, STRANDED
- 7.MAX INSULATION DIA: 1.5
- 8.THIS PRODUCT HAS NOT COMPLETED VALIDATION TESTING

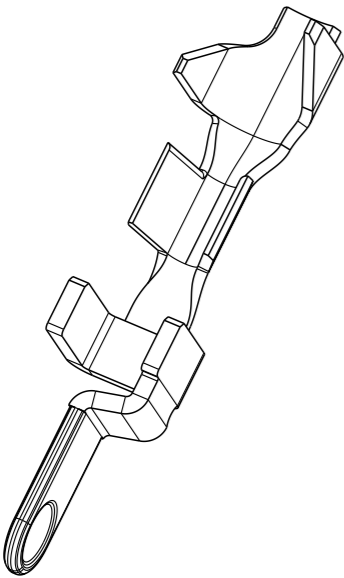


SCALE 10:1

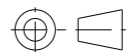




SECTION A-A

PRELIMINARY



SCALE 8:1

spec ref		dr		Mathew Jacob	2015/03/30	projection 	MM 	size	A3	scale	10:1
tolerance std ISO 406 ISO 1101	TOLERANCES UNLESS OTHERWISE SPECIFIED	eng	Mathew Jacob	2015/07/06	ecn no			-			
		chr	-	-	rel level			Preliminary			
		appr	-	-	product family	ROTACONNECT					
surface ISO 1302	linear	0.X	±0.20		title	CTW PLUG TERMINAL WIRE TO BOARD CONNECTOR		dwg no	10120045-P0X		rev 1
		0.XX	±0.13								
		0.XXX	±0.05								
		angular	0°	±2°	www.fci.com	cat. no.	SEE TABLE	Product - Customer Drw		sheet 1 of 1	